

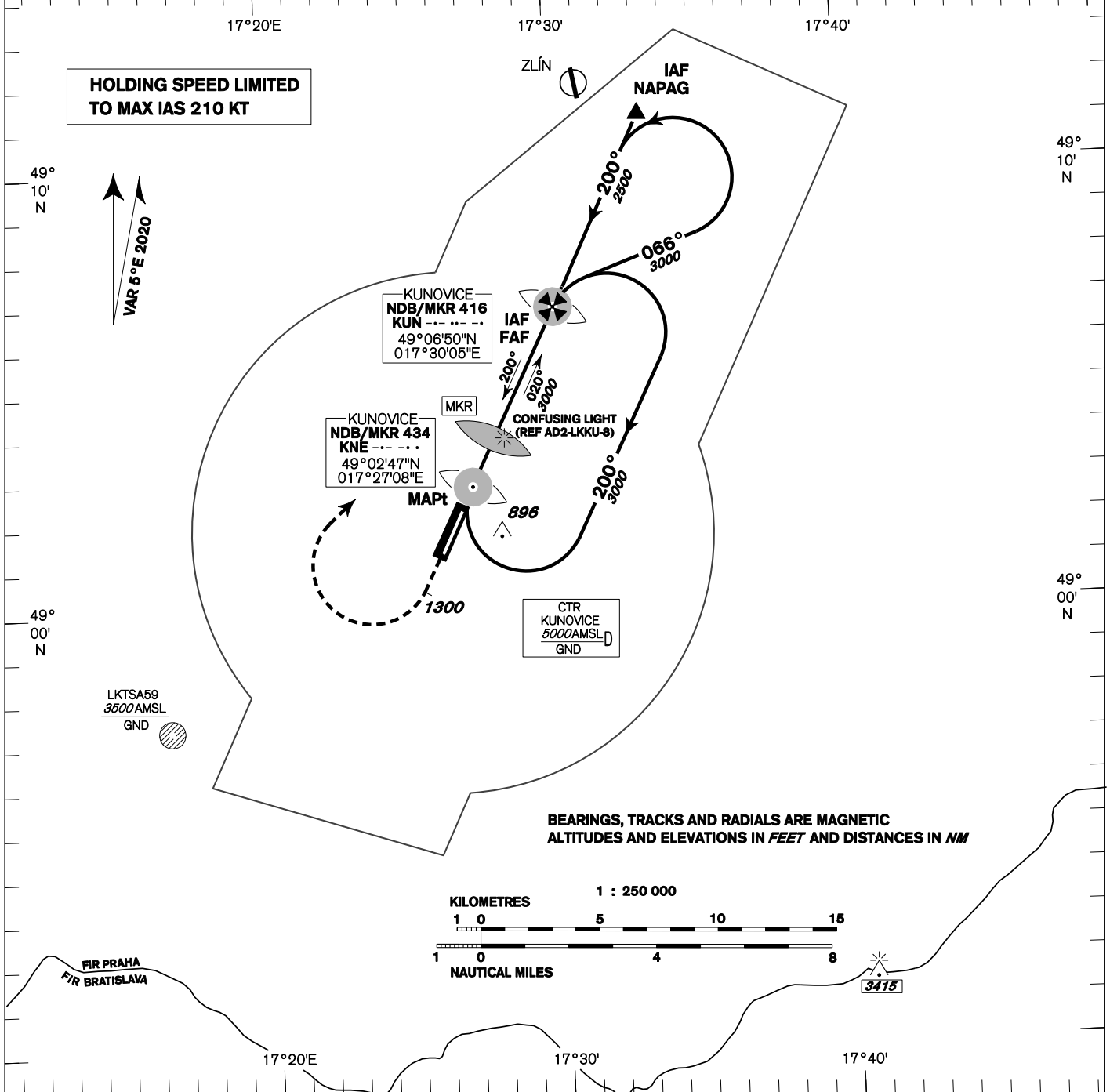
INSTRUMENT APPROACH CHART - ICAO

AERODROME ELEV **581**
 THR RWY 20C ELEV **581**
 OCH RELATED TO THR RWY 20C

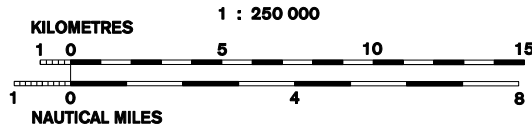
KUNOVICE TOWER 120,105



KUNOVICE NDB
RWY 20C
 (ACFT CAT A,B,C)

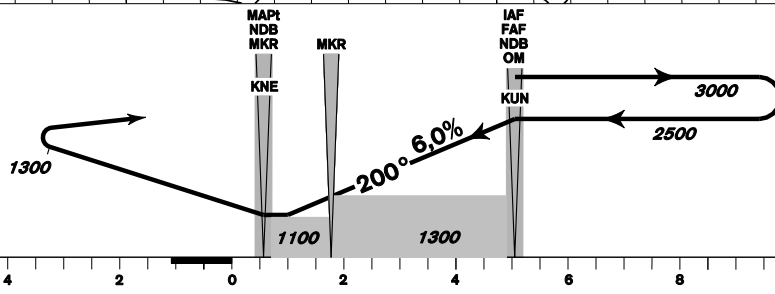


BEARINGS, TRACKS AND RADIALS ARE MAGNETIC
 ALTITUDES AND ELEVATIONS IN FEET AND DISTANCES IN NM



MISSED APPROACH:
 Climb to 1300
 turn right to NDB KUN
 in climbing 3000

TRANSITION ALTITUDE
5000ft



THR 490215.11N, 0172644.57E
 ELEV 581
 NM FM THR 20C

OCA/OCH		A	B	C
Straight-in Approach	ft	1100/520		
Circling	ft	1190/-	1410/-	1680/-

FAF - MAPt 4,49 NM	kt	Rate of descent					
		80	100	120	140	160	180
mins:sec		3:21	2:41	2:14	1:55	1:41	1:29
ft/min		490	620	740	860	990	1110

Timing is not authorized for defining the MAPt.