

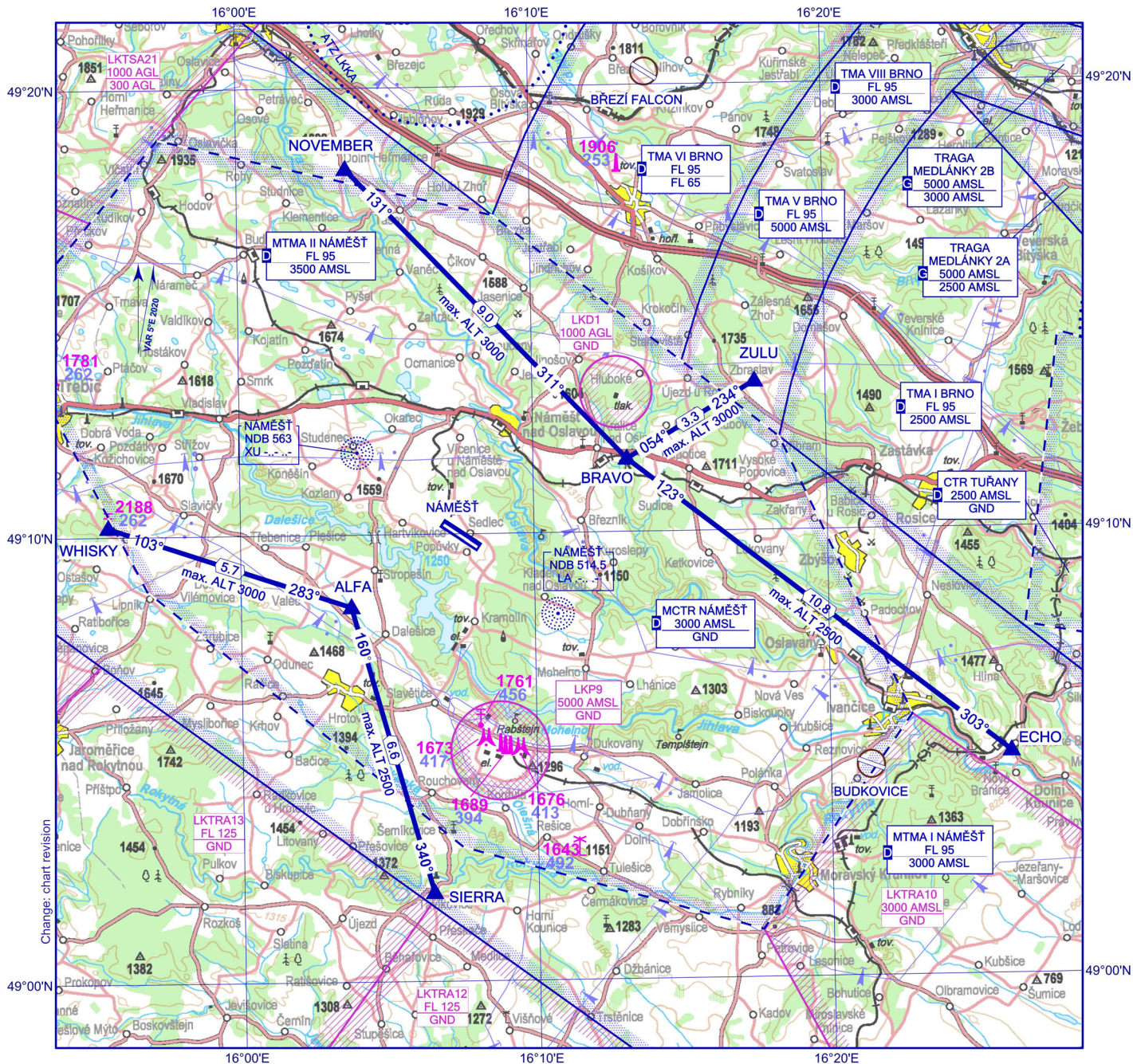
AD ELEV 1547 ft

VFR Arrivals and Departures Chart

NÁMĚŠŤ

BEARINGS ARE MAGNETIC  
ALT AND ELEV IN FEET  
DISTANCES ARE IN NM

<b>NÁMĚŠŤ TOWER</b>	<b>126,505</b> <b>121,180 (reserve)</b>
<b>NÁMĚŠŤ RADAR</b>	<b>118,155</b> <b>266,200 (reserve)</b>
<b>PRECISION</b>	<b>283,900</b> <b>123,300 (reserve)</b>



Entry / Exit points:

NOVEMBER (Dolní Heřmanice)	49 18 11 N 016 03 43 E
ECHO (Moravské Bránice)	49 04 59 N 016 26 08 E
SIERRA (Tavíkovice)	49 01 59 N 016 06 27 E
WHISKY (Klučovská Hora)	49 10 12 N 015 55 30 E
ZULU (Zbraslav)	49 13 20 N 016 17 35 E

Holding points:

ALFA (Rybník Bezděkův NW Dalešice)	49 08 23 N 016 03 45 E
BRAVO (Olšinský mlýn 0,5km SE Kralice n. Oslavou)	49 11 38 N 016 13 12 E

1 : 250 000



**1502** Elevation of Top (AMSL) of obstacle  
**499** Height of Obstacle (AGL)

Arrivals 30/12	Waypoint sequence
NOVEMBER 1 ZULU 1 ECHO 1 SIERRA 1 WHISKY 1	NOVEMBER - BRAVO ZULU - BRAVO ECHO - BRAVO SIERRA - ALFA WHISKY - ALFA

Departure 30/12	Waypoint sequence
NOVEMBER 1 ZULU 1 ECHO 1 SIERRA 1 WHISKY 1	BRAVO - NOVEMBER BRAVO - ZULU BRAVO - ECHO ALFA - SIERRA ALFA - WHISKY

