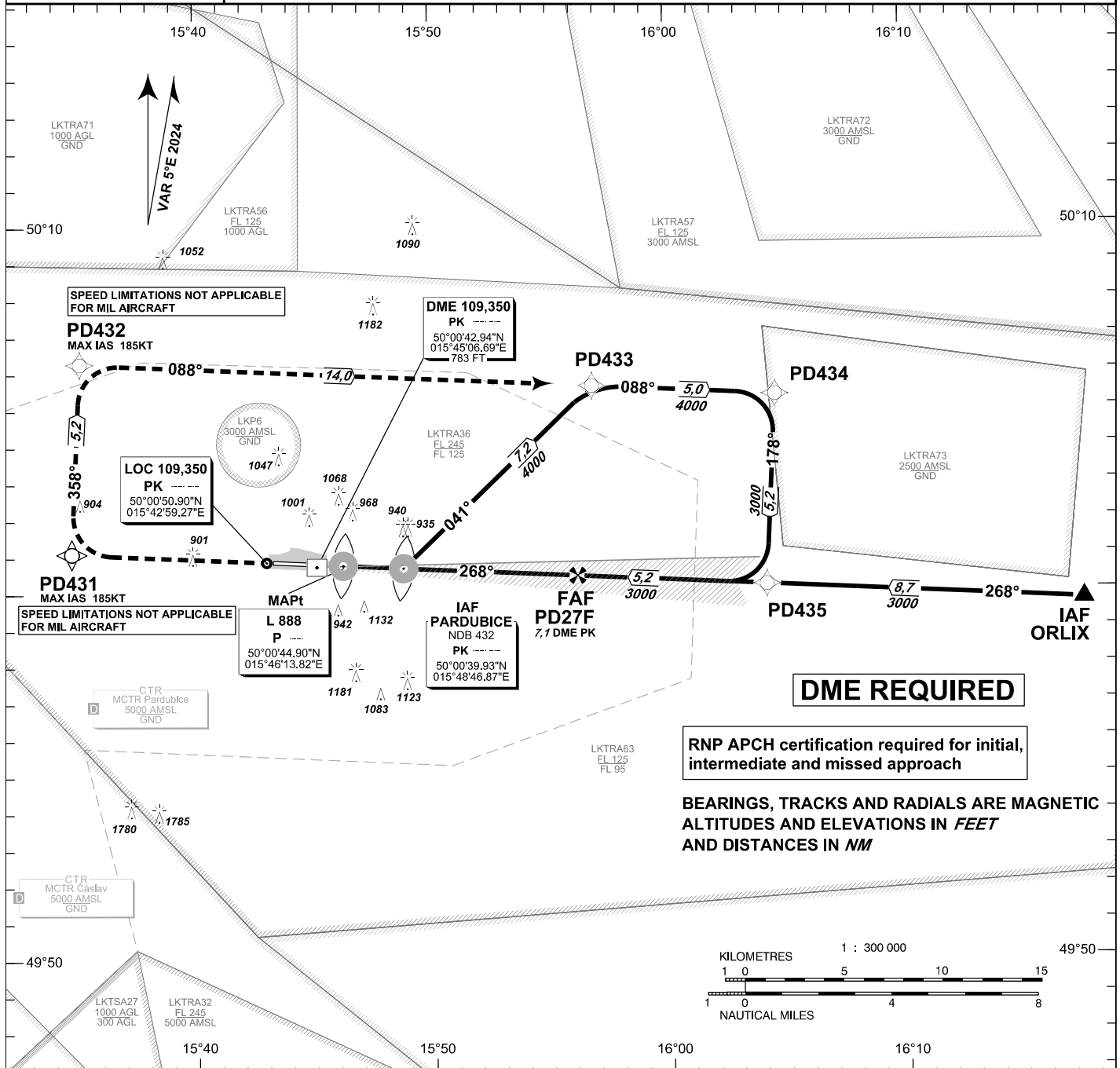


# INSTRUMENT APPROACH CHART - ICAO

**AERODROME ELEV 741**  
**THR RWY 27 ELEV 731**  
**OCH RELATED TO THR RWY 27**

PARDUBICE	
RADAR	128,365 267,300 O/R
PRECISION	296,825 O/R 123,300 O/R reserve
TOWER	120,155 120,205 reserve

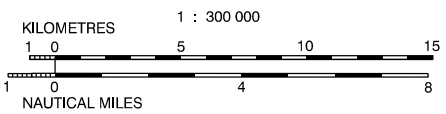
## PARDUBICE ILS Y RWY 27



**DME REQUIRED**

RNP APCH certification required for initial, intermediate and missed approach

BEARINGS, TRACKS AND RADIALS ARE MAGNETIC  
ALTITUDES AND ELEVATIONS IN FEET  
AND DISTANCES IN NM



**MISSED APPROACH:**  
Climb straight ahead to PD431, turn right to PD432, turn right to PD433 and join Initial approach via PD434. Climb to 4000ft.

**MA turn: MAX IAS limited to 185 kt**  
**SPEED LIMITATIONS NOT APPLICABLE FOR MIL AIRCRAFT**

THR 500046.50N, 0154521.56E  
ELEV 731

ILS RDH 50,85 ft

TRANSITION ALTITUDE 5000ft

OCA/OCH		A	B	C	D									
Straight-in	CAT I	ft	889 / 168	912 / 181	920 / 189	930 / 199	DME PK NM	7	6	5	4	3	2	1
Approach	LOC	ft	1070 / 340				ALTITUDES ft	2960	2640	2330	2010	1690	1370	1050
Circling South of AD Only!		ft	1240 / 510	1430 / 700	1580 / 850	1730 / 1010								
		kt	80	100	120	140	160	180						
FAF - MAPt 6,4 NM		min:sec	4:46	3:46	3:12	2:45	2:24	2:08						
		Rate of descent ft/min	430	540	650	750	860	970						

change: distance between FAF PD27F and PD435  
previous change: VAR; MAG tracks

Timing is not authorized for defining the MAPt.

Seznam traťových bodů / Way point list		
PD431	50 01 06,03 N	015 34 45,03 E
PD432	50 06 16,69 N	015 35 07,22 E
PD433	50 05 36,10 N	015 56 49,25 E
PD434	50 05 20,62 N	016 04 34,47 E
PD435	50 00 09,87 N	016 04 09,11 E
PD27F	50 00 25,78 N	015 56 09,06 E

