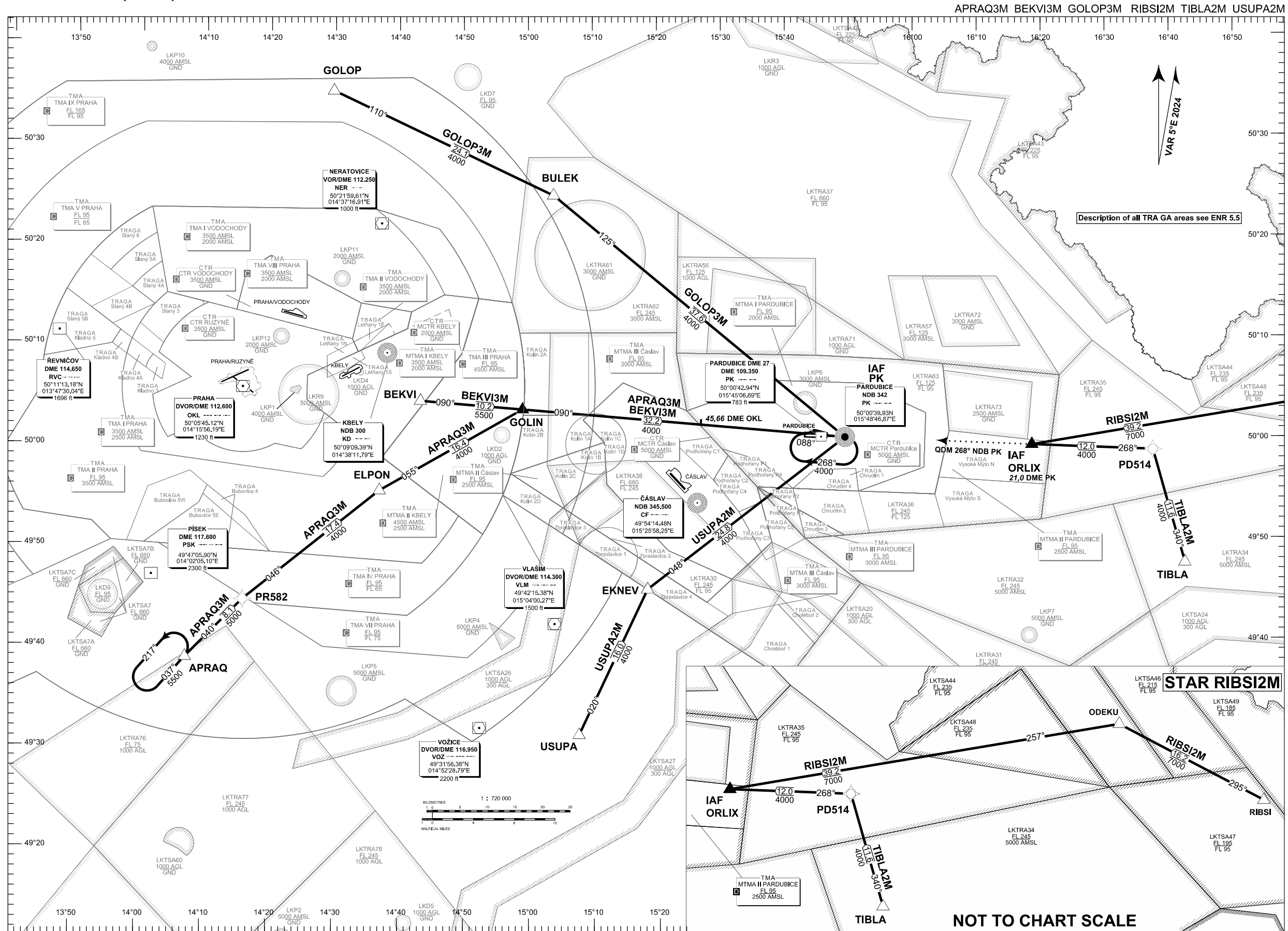
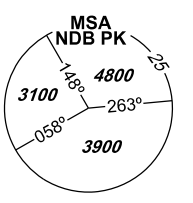


# STANDARD ARRIVAL CHART- INSTRUMENT (STAR) - ICAO

# PARDUBICE (LKPD) RNAV RWY 09-27



PARDUBICE	
RADAR	128,365 267,300 O/R
PRECISION	296,825 O/R 123,300 O/R reserve
TOWER	120,155 120,205 reserve



BEARINGS, TRACKS AND RADIALS ARE MAGNETIC  
ALTITUDES AND ELEVATIONS  
ARE IN FEET  
DISTANCES ARE IN NM

TRANSITION ALTITUDE  
5000 FT



change : PR582 designation; IAF ORLIX label - addition of PK DME DIST  
previous change : VAR; MAG tracks; route designators

NOT TO CHART SCALE