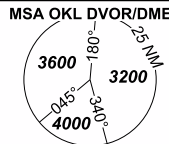


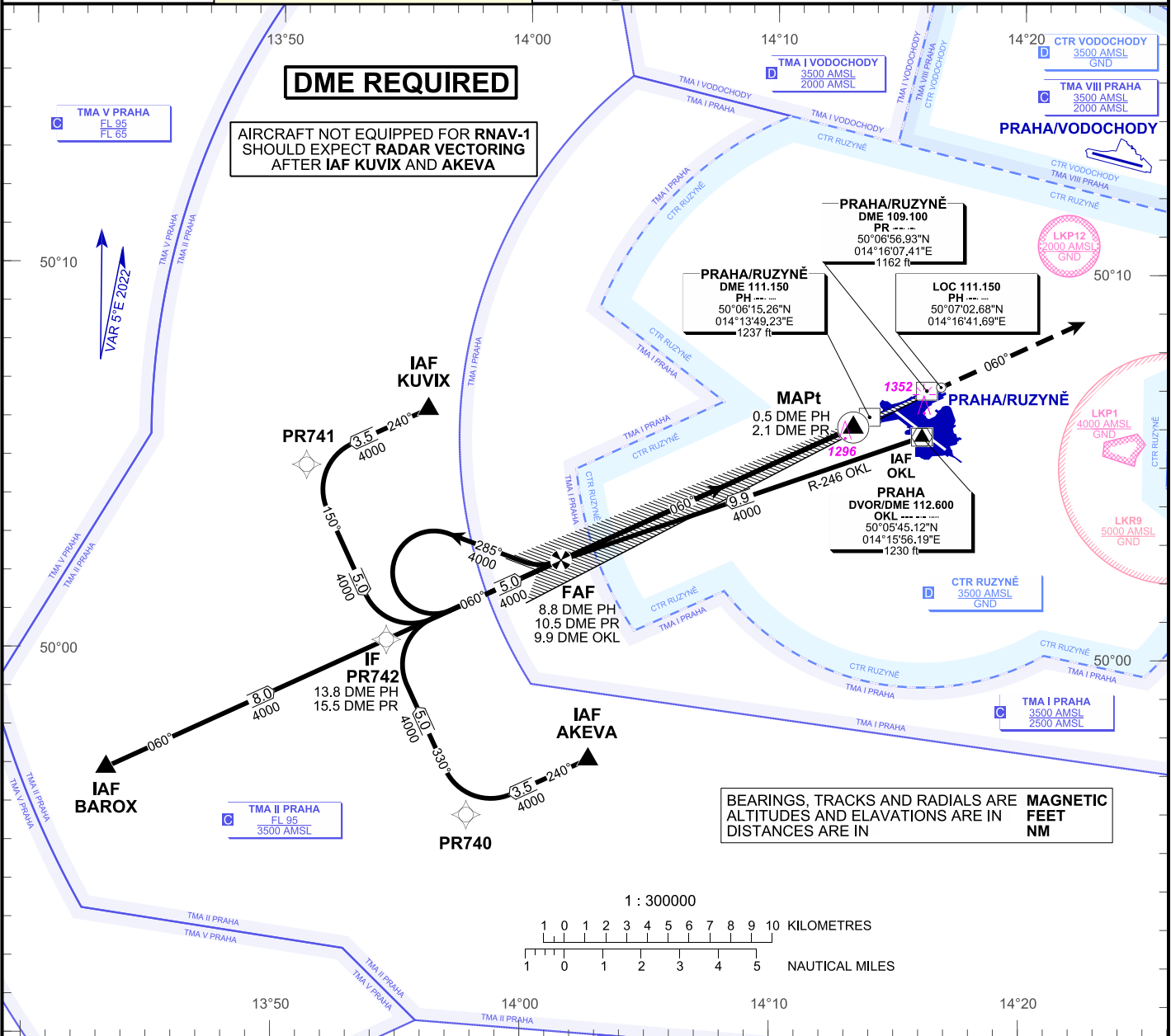
INSTRUMENT APPROACH CHART - ICAO

PRAHA RADAR 127.580
RUZYNE RADAR 119.010
SUPPLEMENTARY FREQ 136.080
RUZYNE TOWER 134.560
SUPPLEMENTARY FREQ 118.110
EMERGENCY FREQ 121.500



PRAHA/Ruzyň (LKPR) ILS RWY 06

AERODROME ELEV 1234 ft
THR RWY 06 ELEV 1202 ft
OCH RELATED TO THR RWY 06



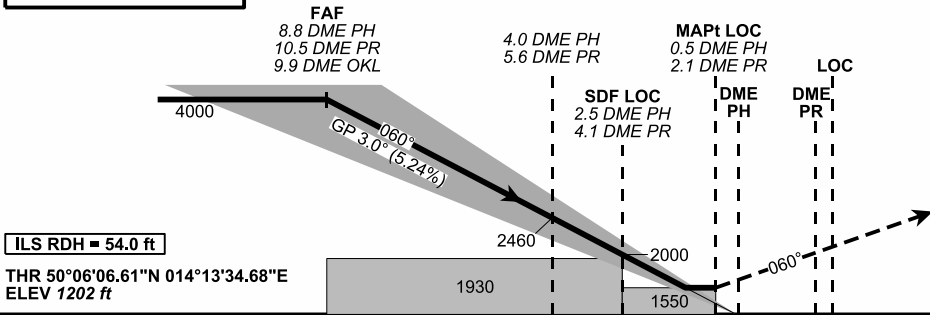
BEARINGS, TRACKS AND RADIALS ARE MAGNETIC
 ALTITUDES AND ELAVATIONS ARE IN FEET
 DISTANCES ARE IN NM

TRANSITION ALT 5000 ft

MISSED APPROACH:

Climb on track 060° to 4000 ft, radar vectoring will be provided.

In case of RCF climb on track 060° to 4000 ft, at 10 NM DME OKL turn left to OKL and climb to 5000 ft.



ILS RDH = 54.0 ft

THR 50°06'06.61"N 014°13'34.68"E ELEV 1202 ft

10 8 6 4 2 0 2 4 6 8 10 NM FM THR RWY 06

OCA / OCH	A	B	C	D
Straight-in Approach	1353 / 150	1364 / 161	1378 / 175	1395 / 192
Cat I ft	1550 / 340			

DME PH	NM	8	7	6	5	4	3	2	1
DME PH	NM	9.6	8.6	7.6	6.6	5.6	4.6	3.6	2.6
DME PR	NM	9.6	8.6	7.6	6.6	5.6	4.6	3.6	2.6
DIST THR	NM	7.8	6.8	5.8	4.8	3.8	2.8	1.8	0.8
ALTITUDES	ft	3730	3420	3100	2780	2460	2150	1820	1510

	kt	80	100	120	140	160	180
FAF - MAPt 8.3 NM	min:sec	6:15	5:00	4:10	3:34	3:07	2:46
Rate of descent (5.24%)	ft/min	430	530	640	740	850	960

Change : cancellation of the circling approach, change of DME PR position, change of DME PR antenna ELEV, change of distance table

Timing is not authorised for defining MAPt.