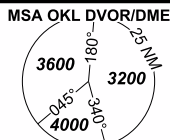


# INSTRUMENT APPROACH CHART - ICAO

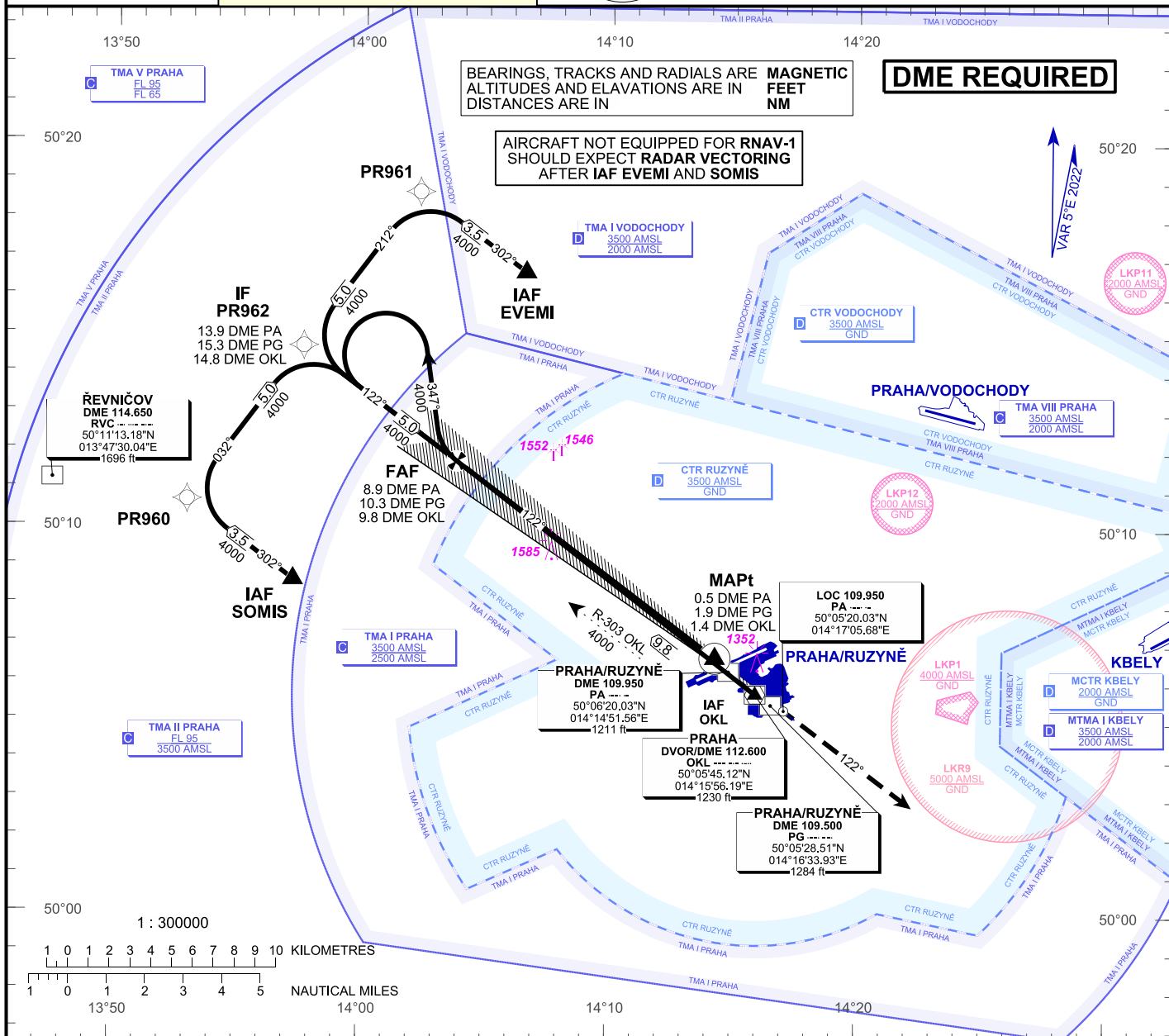
PRAHA RADAR 127.580  
 RUZYNE RADAR 119.010  
 SUPPLEMENTARY FREQ 136.080  
 RUZYNE TOWER 134.560  
 SUPPLEMENTARY FREQ 118.110  
 EMERGENCY FREQ 121.500



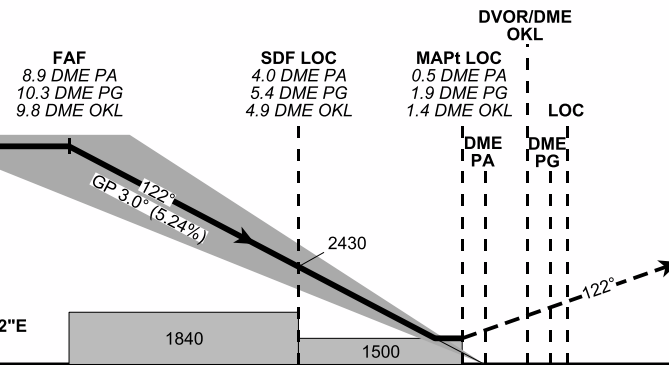
## PRAHA/Ruzyň (LKPR) ILS

**RWY 12**

AERODROME ELEV 1234 ft  
 THR RWY 12 ELEV 1160 ft  
 OCH RELATED TO THR RWY 12



**TRANSITION ALT 5000 ft**



**MISSED APPROACH:**

Climb on track 122° to 4000 ft, radar vectoring will be provided.

In case of RCF climb on track 122° to 4000 ft, at 10 NM DME OKL turn right to OKL and climb to 5000 ft.

10 8 6 4 2 0 2 4 6 8 10 NM FM THR RWY 12

OCA / OCH	A	B	C	D
Straight-in Approach	Cat I ft 1313 / 153	1327 / 167	1343 / 183	1359 / 199
LOC ft	1500 / 340			

Operating minima RVR 750 m

DME PA	NM	8	7	6	5	4	3	2	1
DME PG	NM	9.4	8.4	7.4	6.4	5.4	4.4	3.4	2.4
DME OKL	NM	8.9	7.9	6.9	5.9	4.9	3.9	2.9	1.9
DIST THR	NM	7.8	6.8	5.8	4.8	3.8	2.8	1.8	0.8
ALTITUDES	ft	3700	3390	3070	2750	2430	2110	1790	1480

FAF - MAPt 8.4 NM	kt	80	100	120	140	160	180
min:sec		6:19	5:03	4:13	3:36	3:10	2:49
Rate of descent (5.24%)	ft/min	420	530	640	740	850	960

Timing is not authorised for defining MAPt.