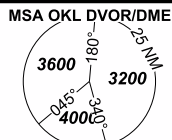


INSTRUMENT APPROACH CHART - ICAO

PRAHA RADAR 127.580
 RUZYNE RADAR 119.010
 SUPPLEMENTARY FREQ 136.080
 RUZYNE TOWER 134.560
 SUPPLEMENTARY FREQ 118.110
 EMERGENCY FREQ 121.500

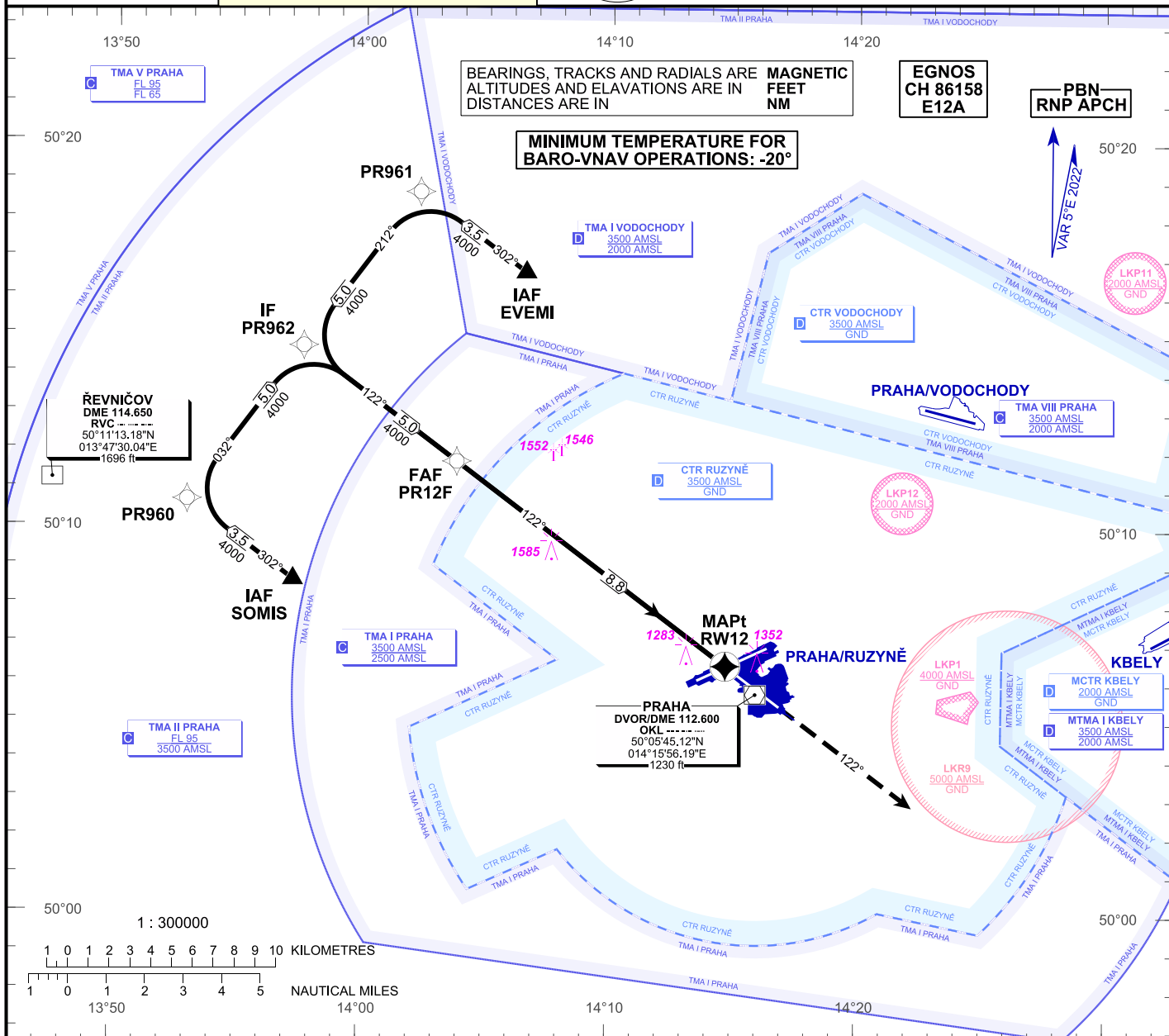


PRAHA/Ruzyň (LKPR)

RNP

RWY 12

AERODROME ELEV 1234 ft
 THR RWY 12 ELEV 1160 ft
 OCH RELATED TO THR RWY 12



BEARINGS, TRACKS AND RADIALS ARE ALTIMETERS AND ELAVATIONS ARE IN FEET NM DISTANCES ARE IN

MINIMUM TEMPERATURE FOR BARO-VNAV OPERATIONS: -20°

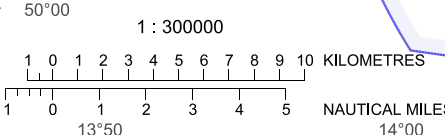
EGNOS CH 86158 E12A

PBN RNP APCH

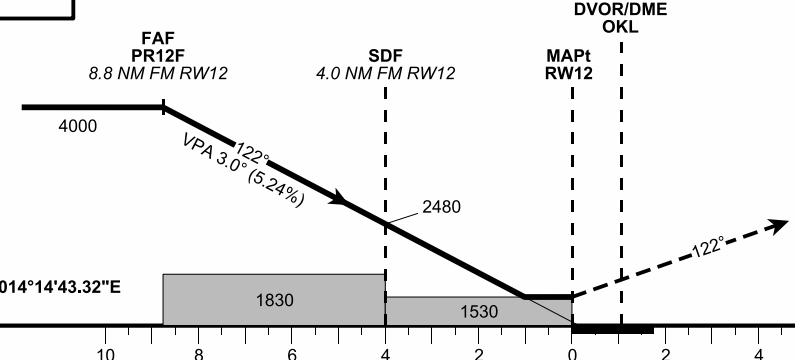
VAR 5°E 2022

ŘEVNIČOV DME 114.650 RVC 50°11'13.18"N 013°47'30.04"E 1696 ft

PRAHA DVOR/DME 112.600 OKL 50°05'45.12"N 014°15'56.19"E 1230 ft



TRANSITION ALT 5000 ft



MISSED APPROACH:
 Climb on track 122° to 4000 ft, radar vectoring will be provided.
 In case of RCF climb on track 122° to 4000 ft, at 10 NM DME OKL turn right to OKL and climb to 5000 ft.

THR 50°06'28.84"N 014°14'43.32"E ELEV 1160 ft

RDH = 49.2 ft

| OCA / OCH | A | B | C | D |
|-------------|----|------------|---|---|
| LNAV | ft | 1530 / 370 | | |
| LNAV / VNAV | ft | 1453 / 293 | | |
| LPV | ft | 1360 / 200 | | |

| DIST THR (MAPt) | NM | 8 | 7 | 6 | 5 | 4 | 3 | 2 | 1 |
|-----------------|----|------|------|------|------|------|------|------|------|
| ALTITUDES | ft | 3760 | 3440 | 3120 | 2800 | 2480 | 2160 | 1850 | 1530 |

| | kt | 80 | 100 | 120 | 140 | 160 | 180 |
|--------------------------|---------|------|------|------|------|------|------|
| FAF - MAPt 8.8 NM | min:sec | 6:34 | 5:16 | 4:23 | 3:45 | 3:17 | 2:55 |
| Rate of descent (5.24 %) | ft/min | 420 | 530 | 640 | 740 | 850 | 950 |

Change : cancellation of the circling approach

Timing is not authorised for defining MAPt.

Posloupnost traťových bodů / Way point sequence

| Od / From IAF SOMIS | | |
|---------------------|------|----------|
| SOMIS | IAF | fly-by |
| PR960 | | fly-by |
| PR962 | IF | fly-by |
| PR12F | FAF | fly-by |
| RW12 | MAPt | fly-over |

| Od / From IAF EVEMI | | |
|---------------------|------|----------|
| EVEMI | IAF | fly-by |
| PR961 | | fly-by |
| PR962 | IF | fly-by |
| PR12F | FAF | fly-by |
| RW12 | MAPt | fly-over |

| Seznam traťových bodů / Way point list | |
|--|------------------------------|
| SOMIS | 50 08 38,56 N 013 57 15,18 E |
| EVEMI | 50 16 38,86 N 014 06 33,88 E |
| PR960 | 50 10 41,95 N 013 52 57,01 E |
| PR961 | 50 18 42,62 N 014 02 15,30 E |
| PR962 | 50 14 42,39 N 013 57 35,78 E |
| PR12F | 50 11 44,17 N 014 03 49,30 E |
| RW12 | 50 06 28,84 N 014 14 43,32 E |

SBAS FAS Data Block

Vstupní data / Input Data

| Parametry / Parameters | Hodnoty / Values |
|-------------------------------------|------------------|
| Operation Type | 0 |
| SBAS Provider | 1 (EGNOS) |
| Airport Identifier | LKPR |
| Runway | 12 |
| Runway Letter | 0 (None) |
| Approach Performance Designator | 0 |
| Route Indicator | |
| Reference Path Data Selector | 0 |
| Reference Path Identifier | E12A |
| LTP/FTP Latitude | 500628.8400N |
| LTP/FTP Longitude | 0141443.3200E |
| LTP/FTP Ellipsoidal Height (metres) | 399.4 |
| FPAP Latitude | 500525.6800N |
| Delta FPAP Latitude (seconds) | -63.1600 |
| FPAP Longitude | 0141654.0200E |
| Delta FPAP Longitude (seconds) | 130.7000 |
| Threshold Crossing Height | 49.2 |
| TCH Units Selector | 0 (feet) |
| Glidepath Angle (degrees) | 3.00 |
| Course Width (metres) | 105.00 |
| Length Offset (metres) | 0 |
| HAL (metres) | 40.0 |
| VAL (metres) | 35.0 |

Výstupní data / Output Data

| Parametry / Parameters | Hodnoty / Values |
|------------------------|--|
| Data Block | 10 12 10 0B 0C 0C 00 00 01 32 31 05 D0 07 81 15 F0 0A 1D 06 9A 23 90 12 FE 18 FD 03 EC 01 2C 01 64 00 C8 AF 1A 7B 66 3B |
| Calculated CRC Value | 1A7B663B |

Požadovaná dodatečná data / Required Additional Data (not CRC wrapped)

| Parametry / Parameters | Hodnoty / Values |
|-------------------------------------|------------------|
| ICAO Code | LK |
| LTP/FTP Orthometric Height (metres) | 353.6 |