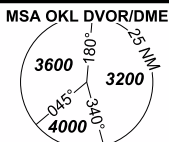


INSTRUMENT APPROACH CHART - ICAO

PRAHA RADAR 127.580
 RUZYNE RADAR 119.010
 SUPPLEMENTARY FREQ 136.080
 RUZYNE TOWER 134.560
 SUPPLEMENTARY FREQ 118.110
 EMERGENCY FREQ 121.500



PRAHA/Ruzyne (LKPR)

RNP

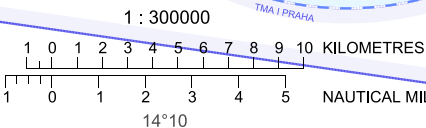
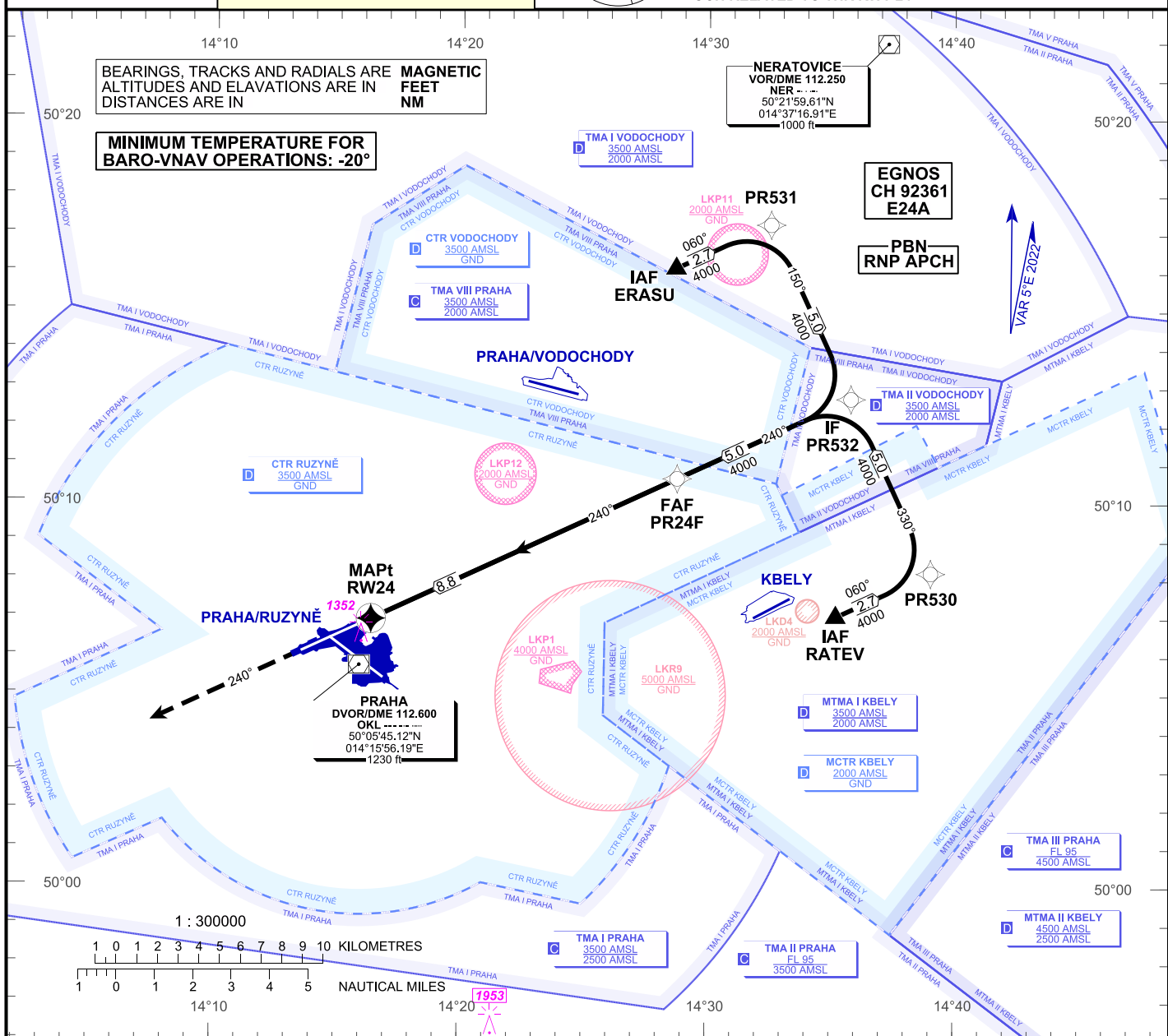
RWY 24

AERODROME ELEV 1234 ft
 THR RWY 24 ELEV 1158 ft
 OCH RELATED TO THR RWY 24

BEARINGS, TRACKS AND RADIALS ARE IN DEGREES
 ALTITUDES AND ELEVATIONS ARE IN FEET
 DISTANCES ARE IN NAUTICAL MILES

MINIMUM TEMPERATURE FOR BARO-VNAV OPERATIONS: -20°

MAGNETIC FEET NM



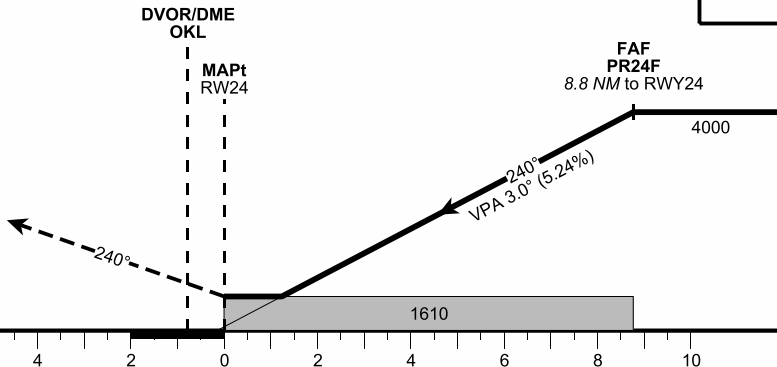
MISSED APPROACH:

Climb on track 240° to 4000 ft, radar vectoring will be provided.

In case of RCF climb on track 240° to 4000 ft, at 10 NM DME OKL turn right to OKL and climb to 5000 ft.

THR 50°06'57.42"N 014°16'24.12"E
 ELEV 1158 ft

TRANSITION ALTITUDE 5000 ft



RDH = 49.2 ft

NM FM THR RWY 24

OCA / OCH	A	B	C	D
LNAV	ft	1610 / 460		
LNAV / VNAV	ft	1507 / 349		
LPV	ft	1358 / 200		

DIST THR (MAPt)	NM	9	8	7	6	5	4	3	2	1
ALTITUDES	ft	4070	3750	3440	3120	2800	2480	2160	1840	1530

	kt	80	100	120	140	160	180
FAF - MAPt 8.8 NM	min:sec	6:34	5:15	4:23	3:45	3:17	2:55
Rate of descent (5.24%)	ft/min	420	530	640	740	850	960

Timing is not authorised for defining MAPt.

Change : cancellation of the circling approach

Posloupnost traťových bodů / Way point sequence

Od / From IAF ERASU		
ERASU	IAF	fly-by
PR531		fly-by
PR532	IF	fly-by
PR24F	FAF	fly-by
RW24	MAPt	fly-over

Od / From IAF RATEV		
RATEV	IAF	fly-by
PR530		fly-by
PR532	IF	fly-by
PR24F	FAF	fly-by
RW24	MAPt	fly-over

Seznam traťových bodů / Way point list	
ERASU	50 16 07,51 N 014 28 41,31 E
RATEV	50 07 03,32N 014 35 12,65 E
PR530	50 08 11,56 N 014 39 03,31 E
PR531	50 17 15,97 N 014 32 32,54 E
PR532	50 12 43,82 N 014 35 48,23 E
PR24F	50 10 38,79 N 014 28 46,27 E
RW24	50 06 57,42 N 014 16 24,12 E

SBAS FAS Data Block

Vstupní data / Input Data

Parametry / Parameters	Hodnoty / Values
Operation Type	0
SBAS Provider	1 (EGNOS)
Airport Identifier	LKPR
Runway	24
Runway Letter	0 (None)
Approach Performance Designator	0
Route Indicator	
Reference Path Data Selector	0
Reference Path Identifier	E24A
LTP/FTP Latitude	500657.4200N
LTP/FTP Longitude	0141624.1200E
LTP/FTP Ellipsoidal Height (metres)	398.5
FPAP Latitude	500606.6100N
Delta FPAP Latitude (seconds)	-50.8100
FPAP Longitude	0141334.6800E
Delta FPAP Longitude (seconds)	-169.4400
Threshold Crossing Height	49.2
TCH Units Selector	0 (feet)
Glidepath Angle (degrees)	3.00
Course Width (metres)	105.00
Length Offset (metres)	0
HAL (metres)	40.0
VAL (metres)	35.0

Výstupní data / Output Data

Parametry / Parameters	Hodnoty / Values
Data Block	10 12 10 0B 0C 18 00 00 01 34 32 05 18 E7 81 15 70 1E 20 06 91 23 0C 73 FE 40 D4 FA EC 01 2C 01 64 00 C8 AF 1E 3C 7D 74
Calculated CRC Value	1E3C7D74

Required Additional Data (not CRC wrapped)

Parametry / Parameters	Hodnoty / Values
ICAO Code	LK
LTP/FTP Orthometric Height (metres)	352.8