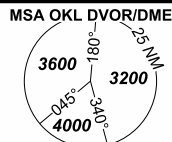


INSTRUMENT APPROACH CHART - ICAO

PRAHA RADAR 127.580
 RUZYNE RADAR 119.010
 SUPPLEMENTARY FREQ 136.080
 RUZYNE TOWER 134.560
 SUPPLEMENTARY FREQ 118.110
 EMERGENCY FREQ 121.500



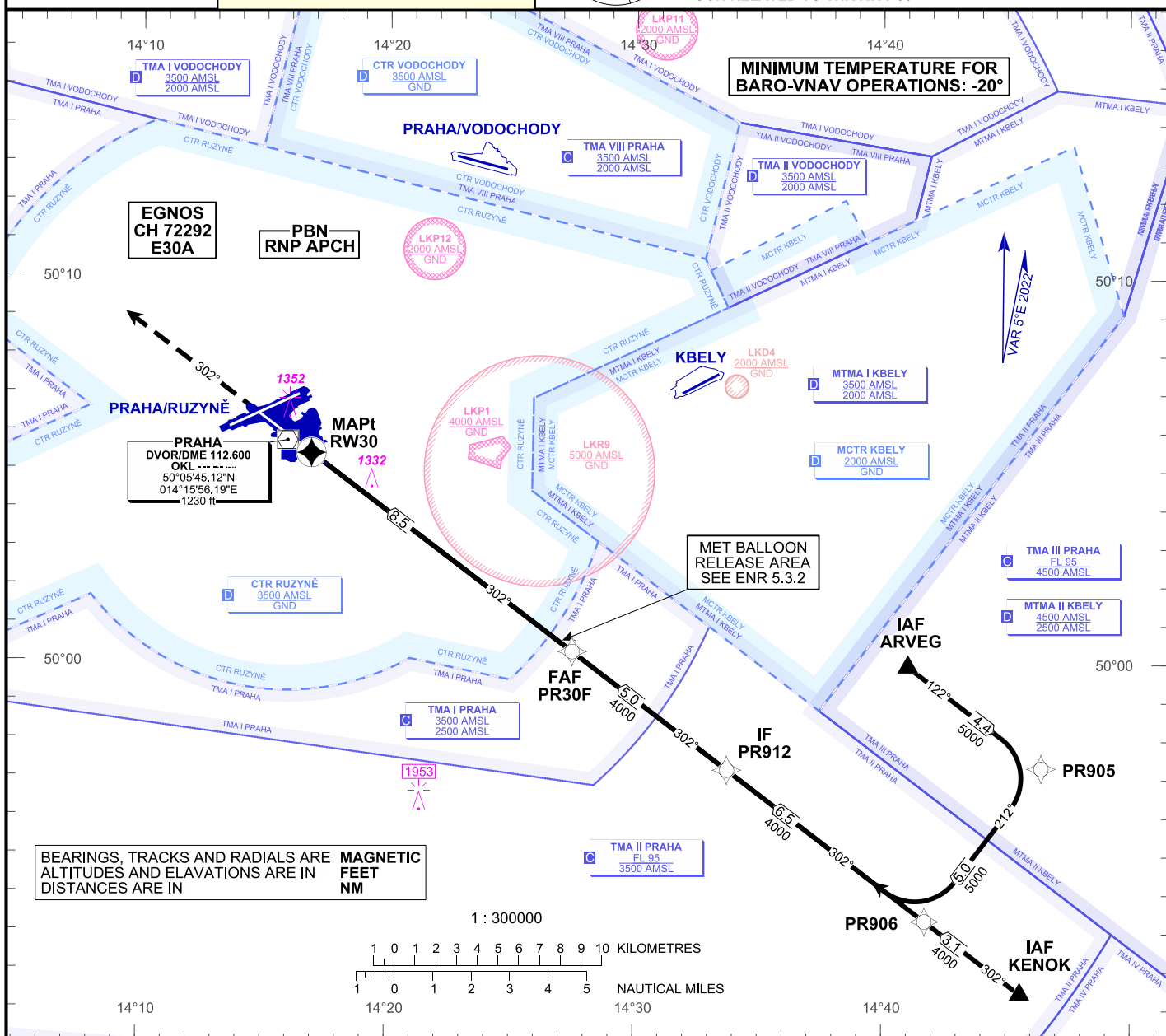
PRAHA/Ruzyň (LKPR)

RNP

RWY 30

AERODROME ELEV 1234 ft
 THR RWY 30 ELEV 1232 ft
 OCH RELATED TO THR RWY 30

MINIMUM TEMPERATURE FOR BARO-VNAV OPERATIONS: -20°



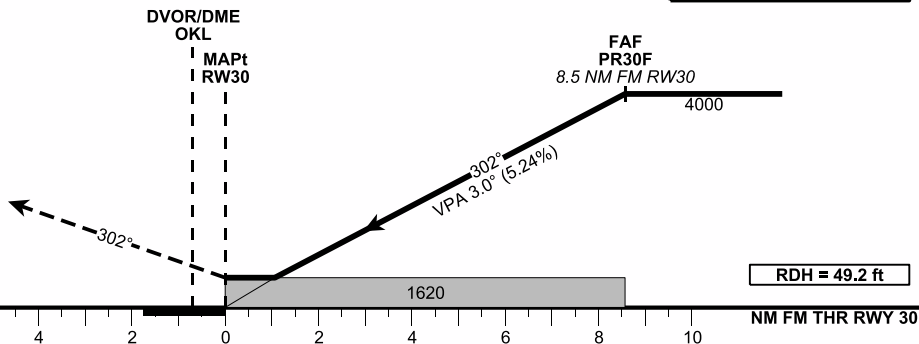
MISSED APPROACH:

Climb on track 302° to 4000 ft, radar vectoring will be provided.

In case of RCF climb on track 302° to 4000 ft, at 10 NM DME OKL turn right to OKL and climb to 5000 ft.

THR 50°05'25.68"N 014°16'54.02"E
 ELEV 1232 ft

TRANSITION ALT 5000 ft



OCA / OCH	A	B	C	D
LNAV	ft	1620 / 380		
LNAV / VNAV	ft	1529 / 297		
LPV	ft	1432 / 200		

DIST THR (MAPt)	NM	9	8	7	6	5	4	3	2	1
ALTITUDES	ft	4150	3830	3510	3190	2870	2550	2240	1920	1600

	kt	80	100	120	140	160	180
FAF - MAPt 8.5 NM	min:sec	6:25	5:07	4:16	3:40	3:12	2:51
Rate of descent (5.24 %)	ft/min	420	530	640	740	850	960

Change : cancellation of the circling approach

Timing is not authorised for defining MAPt.

Posloupnost traťových bodů / Way point sequence

Od / From IAF ARVEG		
ARVEG	IAF	fly-by
PR905		fly-by
PR906		fly-by
PR912	IF	fly-by
PR30F	FAF	fly-by
RW30	MAPt	fly-over

Od / From IAF KENOK		
KENOK	IAF	fly-by
PR906		fly-by
PR912	IF	fly-by
PR30F	FAF	fly-by
RW30	MAPt	fly-over

Seznam traťových bodů / Way point list	
PR905	49 57 17,86 N 014 46 25,19 E
KENOK	49 51 26,01 N 014 45 34,00 E
PR906	49 53 19,27 N 014 41 43,75 E
PR912	49 57 14,58 N 014 33 44,54 E
PR30F	50 00 18,07 N 014 27 29,23 E
RW30	50 05 25,68 N 014 16 54,02 E
ARVEG	49 59 56,37 N 014 41 02,25 E

SBAS FAS Data Block

Vstupní data / Input Data

Parametry / Parameters	Hodnoty / Values
Operation Type	0
SBAS Provider	1 (EGNOS)
Airport Identifier	LKPR
Runway	30
Runway Letter	0 (None)
Approach Performance Designator	0
Route Indicator	
Reference Path Data Selector	0
Reference Path Identifier	E30A
LTP/FTP Latitude	500525.6800N
LTP/FTP Longitude	0141654.0200E
LTP/FTP Ellipsoidal Height (metres)	421.2
FPAP Latitude	500628.8400N
Delta FPAP Latitude (seconds)	63.1600
FPAP Longitude	0141443.3200E
Delta FPAP Longitude (seconds)	-130.7000
Threshold Crossing Height	49.2
TCH Units Selector	0 (feet)
Glidepath Angle (degrees)	3.00
Course Width (metres)	105.00
Length Offset (metres)	0
HAL (metres)	40.0
VAL (metres)	35.0

Výstupní data / Output Data

Parametry / Parameters	Hodnoty / Values
Data Block	10 12 10 0B 0C 1E 00 00 01 30 33 05 60 1A 7F 15 08 08 21 06 74 24 70 ED 01 E8 02 FC EC 01 2C 01 64 00 C8 AF 5A B9 20 0F
Calculated CRC Value	5AB9200F

Požadovaná dodatečná data / Required Additional Data (not CRC wrapped)

Parametry / Parameters	Hodnoty / Values
ICAO Code	LK
LTP/FTP Orthometric Height (metres)	375.5