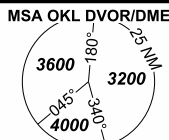


# INSTRUMENT APPROACH CHART - ICAO

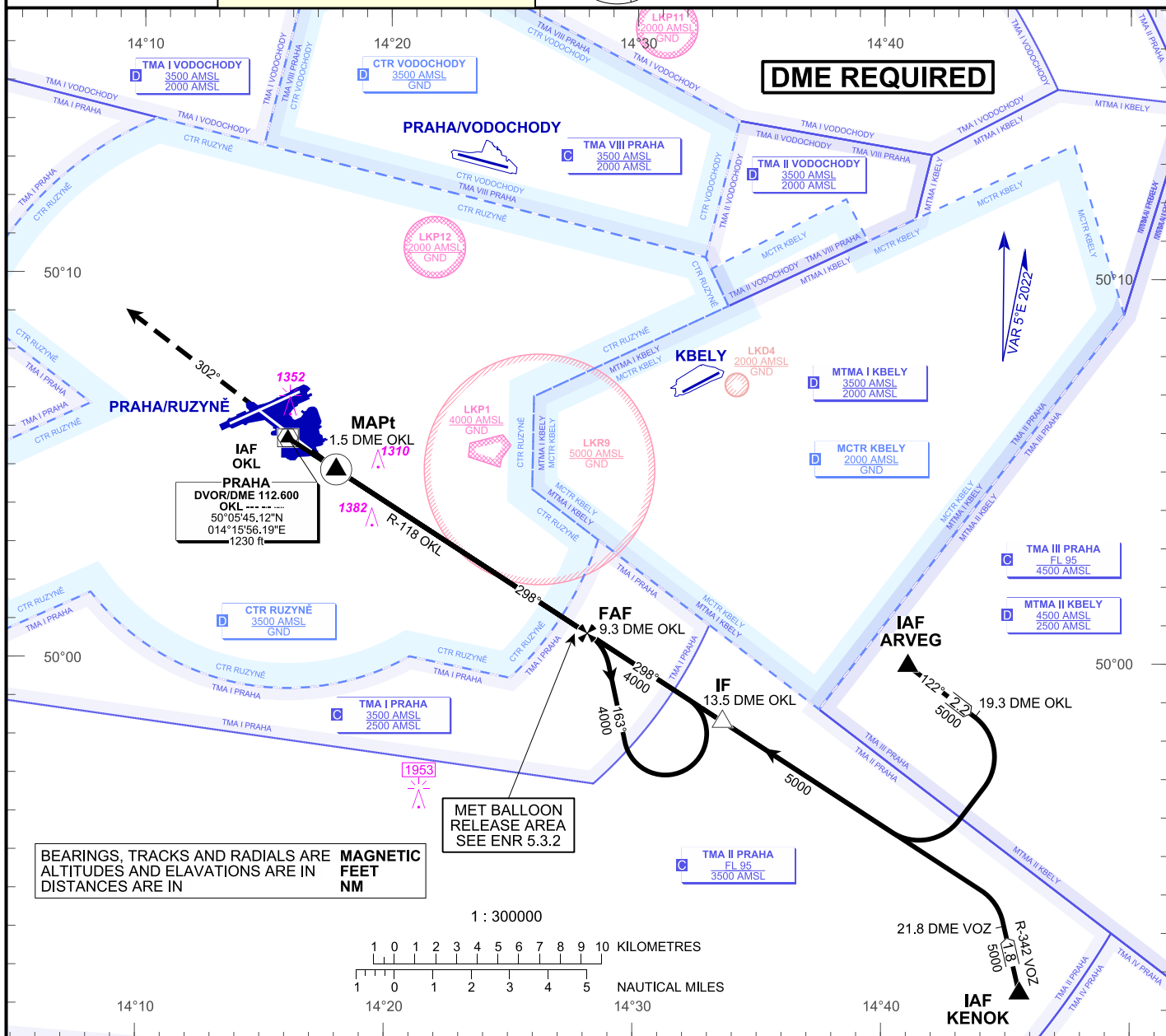
PRAHA RADAR 127.580  
 RUZYNE RADAR 119.010  
 SUPPLEMENTARY FREQ 136.080  
 RUZYNE TOWER 134.560  
 SUPPLEMENTARY FREQ 118.110  
 EMERGENCY FREQ 121.500



# PRAHA/Ruzyň (LKPR) VOR

**RWY 30**

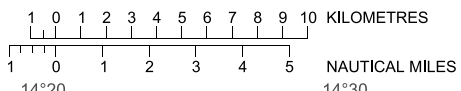
AERODROME ELEV 1234 ft  
 THR RWY 30 ELEV 1232 ft  
 OCH RELATED TO THR RWY 30



BEARINGS, TRACKS AND RADIALS ARE ALTITUDES AND ELAVATIONS ARE IN DISTANCES ARE IN

**MAGNETIC FEET NM**

1 : 300000



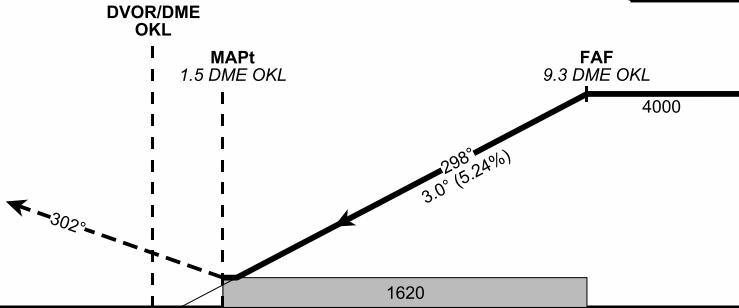
**MISSED APPROACH:**

Climb on track 302° to 4000 ft, radar vectoring will be provided.

In case of RCF climb on track 302° to 4000 ft, at 10 NM DME OKL turn right to OKL and climb to 5000 ft.

THR 50°05'25.68"N 014°16'54.02"E ELEV 1232 ft

**TRANSITION ALT 5000 ft**



10 8 6 4 2 0 2 4 6 8 10 NM FM THR RWY 30

OCA / OCH	A	B	C	D
Straight-in Approach ft	1620 / 380			

DME OKL	NM	10	9	8	7	6	5	4	3	2
DIST THR	NM	9.3	8.3	7.3	6.3	5.3	4.3	3.3	2.3	1.3
ALTITUDES	ft	4240	3920	3610	3290	2970	2650	2330	2010	1700

	kt	80	100	120	140	160	180
FAF - MAPt 7.8 NM	min:sec	5:50	4:40	3:53	3:20	2:55	2:36
Rate of descent (5.24 %)	ft/min	420	530	640	740	850	960

Change : cancellation of the circling approach

Timing is not authorised for defining MAPt.