

ČESKÁ REPUBLIKA
CZECH REPUBLIC

ŘÍZENÍ LETOVÉHO PROVOZU ČR, s.p.
Středisko AIM
AIR NAVIGATION SERVICES OF THE C.R.
AIM Centre

Navigační 787
252 61 Jeneč

AIP SUP

7/21

PUBLICATION DATE: 11 MAR 21

+420 220 372 841
+420 220 372 702
ais@ans.cz
<https://aim.rlp.cz>

Praha/Ruzyně (LKPR) -
letové postupy v souvislosti se zkrácením
RWY 12/30.

Praha/Ruzyne (LKPR) -
flight procedures related to shortening of
RWY 12/30.

1. Platnost/Validity: od/from: ~~22 APR 21~~ **26 APR 21 07:00**
do/to: ~~UFN~~ **2 JUL 21 09:00**

(Ref. NOTAM A/X0362/21)

2. Část AIP, které se tento AIP SUP týká/AIP section affected by this AIP SUP: **AD 2 / LKPR**

3. Proved'te záznam na straně/Record the AIP SUP on page **GEN 0.3-1**.

4. Následující publikace jsou zahrnuty do tohoto AIP SUP a tím zrušeny:

The following publications have been incorporated in this AIP SUP and therefore cancelled:

AIP SUP: NIL

AIC: NIL

Následující NOTAMy jsou zahrnuty do tohoto AIP SUP a budou zrušeny NOTAMem:

The following NOTAMs are incorporated in this AIP SUP. They will be cancelled by NOTAM.

NOTAM: NIL

V souvislosti se zkrácením RWY 12/30 v období od 22 APR 21 do odvolání jsou v platnosti následující změny:

In relation to shortening of RWY 12/30 for period from 22 APR 21 until further notice the following changes are in force:

1. Pozastavuje se platnost map:

**LKPR AD 2-37-21 ILS RWY 12,
LKPR AD 2-37-23 RNP RWY 12,
LKPR AD 2-37-25 VOR RWY 12.**

2. Byly zkonstruovány nové přibližovací postupy, které zahrnují posunutí prahu dráhy 12. Tyto postupy jsou označeny Z (ZULU) a jsou přílohou tohoto SUP:

**LOC Z RWY 12,
RNP Z RWY 12,
VOR Z RWY 12.**

3. **Komunikace:** Z důvodu omezení rizika záměny přibližovacího postupu pro RWY 12 bude služba řízení používat při vydávání instrukcí pro přiblížení označení **ZULU**. Piloti jsou žádáni, aby instrukci potvrdili včetně označení **ZULU**.

4. Zkrácením RWY 12/30 se posouvá THR 12 do nové polohy s označením THR 12C:

1. Validity of the following charts is suspended:

**LKPR AD 2-37-21 ILS RWY 12,
LKPR AD 2-37-23 RNP RWY 12,
LKPR AD 2-37-25 VOR RWY 12.**

2. New procedures have been designed that include RWY 12 threshold displacement. These procedures are marked Z (ZULU) and are appended to this SUP:

**LOC Z RWY 12,
RNP Z RWY 12,
VOR Z RWY 12.**

3. **Communication:** By reason of limiting the risk of interchanging RWY 12 approach procedures by mistake the ATC will use the **ZULU** designation when issuing approach instructions. Pilots are requested to confirm the instruction including the **ZULU** designation.

4. By shortening of RWY 12/30, THR 12 is displaced to a new position marked THR 12C:

THR 12C	50 06 23,04 N	014 14 55,34 E	ELEV 355,4 m / 1166 ft
---------	---------------	----------------	------------------------

Přílohy:

Appendixes:

- IAC PRAHA/Ruzyně LOC Z RWY 12
- IAC PRAHA/Ruzyně RNP Z RWY 12
- IAC PRAHA/Ruzyně VOR Z RWY 12

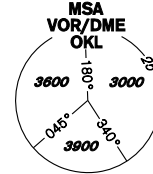
- K O N E C -

- E N D -

INSTRUMENT APPROACH CHART - ICAO

AERODROME ELEV **1234**
THR RWY 12C ELEV **1166**
OCH RELATED TO THR RWY 12C

PRAHA RADAR 127,580
RUZYŇNĚ RADAR 119,010
SUPPLEMENTARY FREQ. 136,080
121,500
RUZYŇNĚ TOWER 134,560
SUPPLEMENTARY FREQ. 118,110
121,500

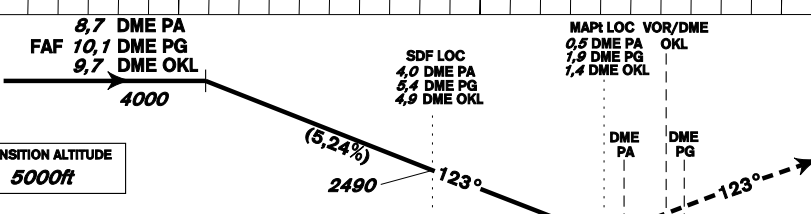
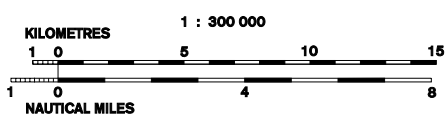
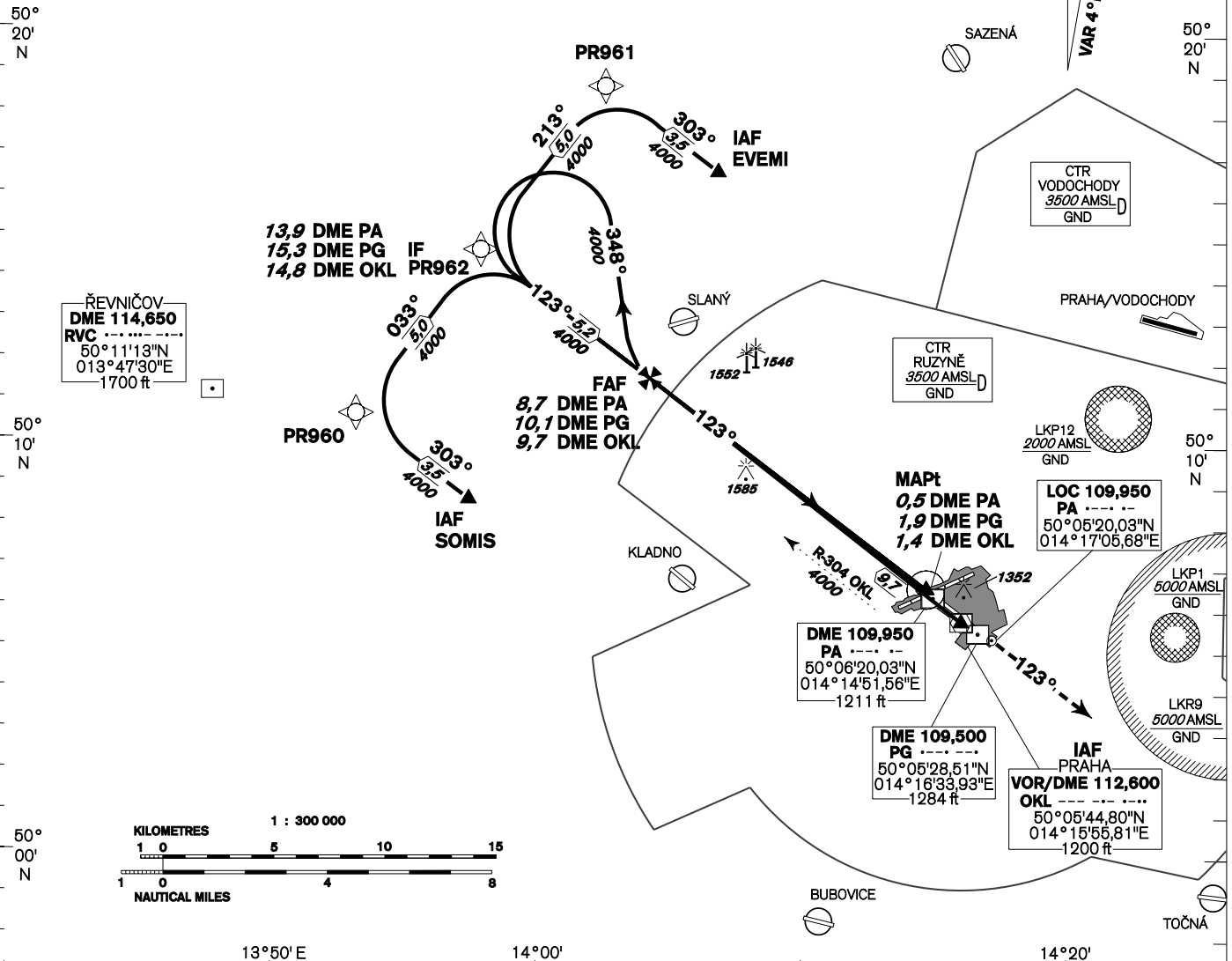


**PRAHA/Ruzyně
LOC Z
RWY 12**

**AIRCRAFT NOT EQUIPPED FOR RNAV-1
SHOULD EXPECT RADAR VECTURING AFTER IAF EVEMI AND SOMIS**

BEARINGS, TRACKS AND RADIALS ARE MAGNETIC
ALTITUDES AND ELEVATIONS IN FEET
AND DISTANCES IN NM

DME REQUIRED



MISSED APPROACH:
Climb on track 123° to 4000ft, radar vectoring will be provided.
In case of RCF climb on track 123° to 4000ft, at 10NM/DME OKL turn right to OKL and climb to 5000ft.

THR 500623,04N 0141455,34E
ELEV 1166

OCA/OCH		A	B	C	D
Straight-in Approach	LOC	1500/340			
Circling		see the circling approach chart			

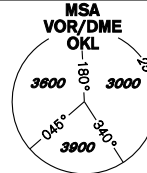
		10	8	6	4	2	1	NM FM THR 12
DIST PA	NM (FAF 8.74)	8	7	6	5	4	3	2
DIST PG	NM	10,14	9,4	8,4	7,4	6,4	5,4	4,4
DIST OKL	NM	9,65	8,9	7,9	6,9	5,9	4,9	3,9
DIST THR	NM	8,74	8	7	6	5	4	3
ALT	ft	4000	3760	3440	3130	2810	2490	2170
GS	kt	80	100	120	140	160	180	
FAF - MAPt	8,3 NM	min:sec	6:11	4:57	4:07	3:32	3:06	2:45
Rate of descent (5,24%)		ft/min	420	530	640	740	850	960

Timing is not authorized for defining the MAPt.

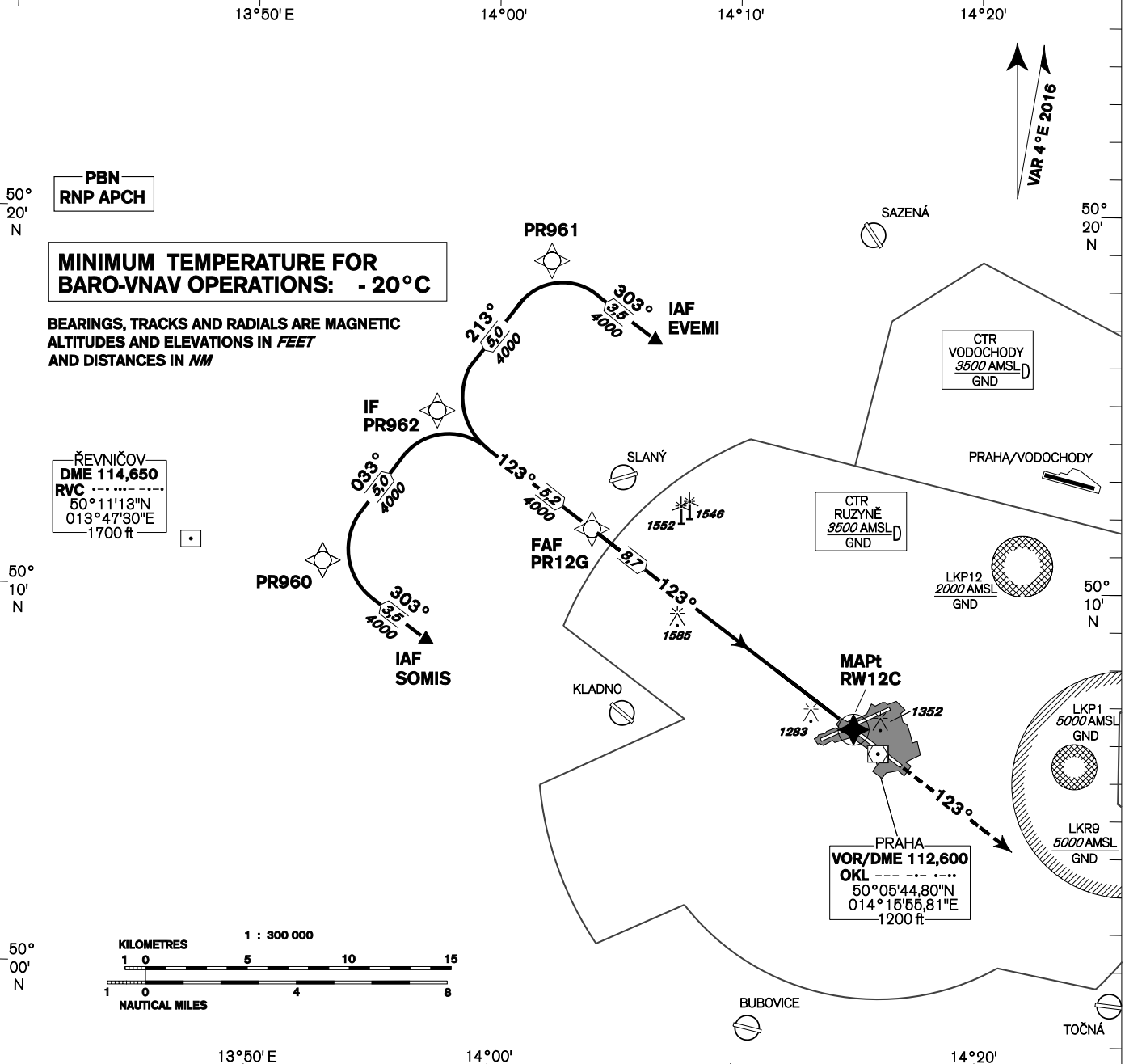
INSTRUMENT APPROACH CHART - ICAO

AERODROME ELEV **1234**
THR RWY 12C ELEV **1166**
OCH RELATED TO THR RWY 12C

PRAHA RADAR 127,580
RUZYŇNÉ RADAR 119,010
SUPPLEMENTARY FREQ. 136,080
121,500
RUZYŇNÉ TOWER 134,560
SUPPLEMENTARY FREQ. 118,110
121,500



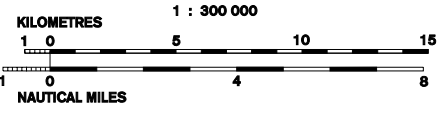
PRAHA/Ruzyně
RNP Z
RWY 12



**MINIMUM TEMPERATURE FOR
BARO-VNAV OPERATIONS: -20°C**

BEARINGS, TRACKS AND RADIALS ARE MAGNETIC
ALTITUDES AND ELEVATIONS IN FEET
AND DISTANCES IN NM

ŘEVNIČOV
DME 114,650
RVC
50°11'13"N
013°47'30"E
1700 ft



FAF PR12G 8,7 NM FM RW12

SDF 4,0 NM FM RW12C

VOR/DME OKL MAPt RW12C

MISSED APPROACH:
Climb on track 123° to 4000ft, radar vectoring will be provided.
In case of RCF climb on track 123° to 4000ft, at 10NM/DME OKL turn right to OKL and climb to 5000ft.

TRANSITION ALTITUDE
5000ft

THR 500623,04N 0141455,34E
ELEV 1166

RDH 49,2 ft

OCA/OCH		A	B	C	D
LNAV	ft		1560 / 390		
LNAV / VNAV	ft		1471 / 305		
Circling		see the circling approach chart			

DIST THR (RW12C) NM	THR 8,74	8	7	6	5	4	3	2	1
ALT ft		4000	3760	3440	3130	2810	2490	2170	1850

GS	kt	80	100	120	140	160	180
FAF - MAPt 8,74 NM	min:sec	6:34	5:15	4:23	3:45	3:17	2:55
Rate of descent (5,24%)	ft/min	420	530	640	740	850	960

Timing is not authorized for defining the MAPt.

change: RWY 12 threshold displaced

Posloupnost traťových bodů / Way point sequence

Od / From IAF SOMIS		
SOMIS	IAF	fly-by
PR960		fly-by
PR962	IF	fly-by
PR12G	FAF	fly-by
RW12C	MAPt	fly-over

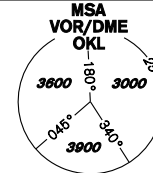
Od / From IAF EVEMI		
EVEMI	IAF	fly-by
PR961		fly-by
PR962	IF	fly-by
PR12G	FAF	fly-by
RW12C	MAPt	fly-over

Seznam traťových bodů / Way point list	
SOMIS	50 08 38,56 N 013 57 15,18 E
EVEMI	50 16 38,86 N 014 06 33,88 E
PR960	50 10 41,95 N 013 52 57,01 E
PR961	50 18 42,62 N 014 02 15,30 E
PR962	50 14 42,39 N 013 57 35,78 E
PR12G	50 11 37,31 N 014 04 02,45 E
RW12C	50 06 23,04 N 014 14 55,34 E

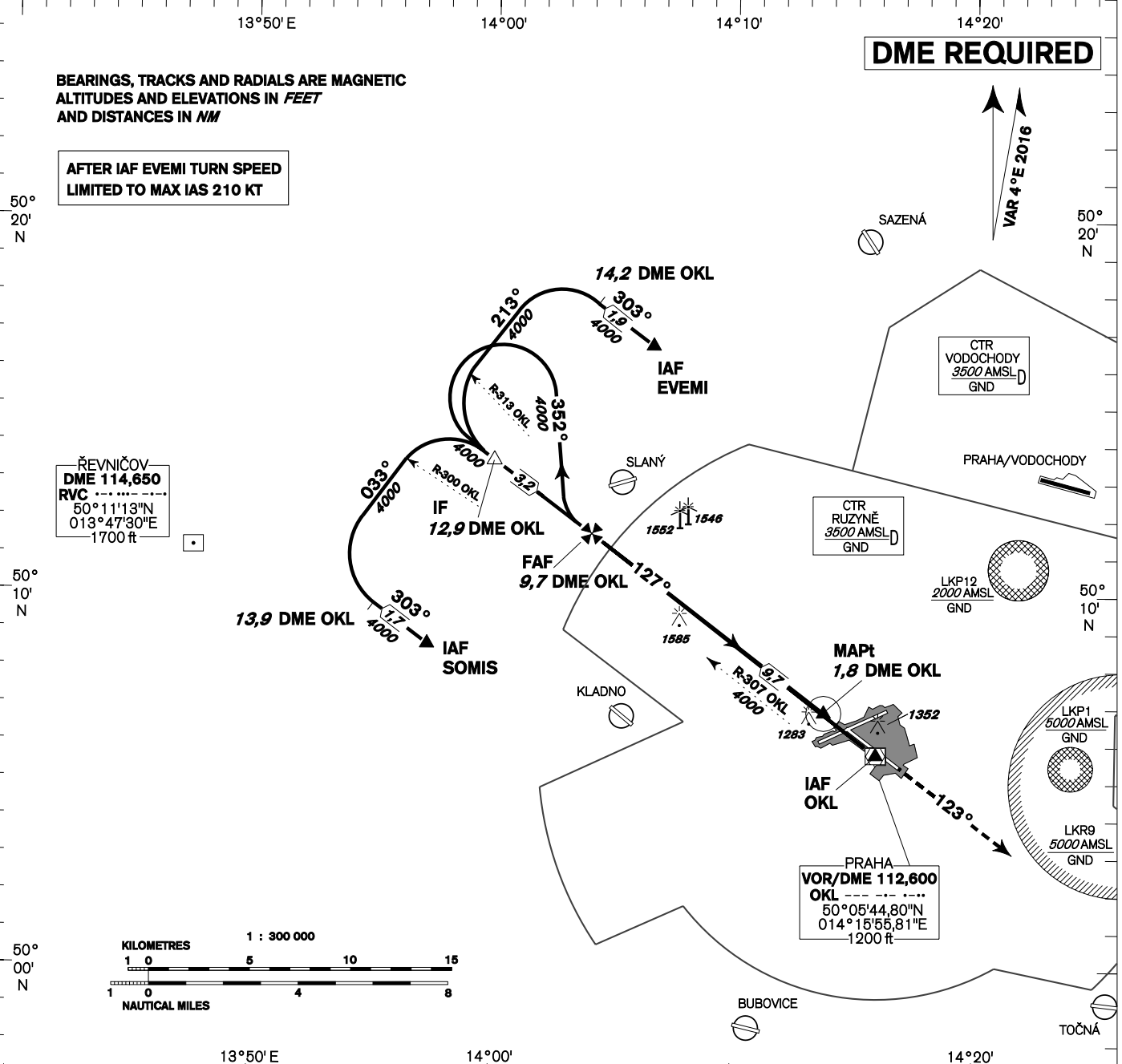
INSTRUMENT APPROACH CHART - ICAO

AERODROME ELEV 1234
THR RWY 12C ELEV 1166
OCH RELATED TO THR RWY 12C

PRAHA RADAR 127,580
RUZYŇ RADAR 119,010
SUPPLEMENTARY FREQ. 136,080
121,500
RUZYŇ TOWER 134,560
SUPPLEMENTARY FREQ. 118,110
121,500

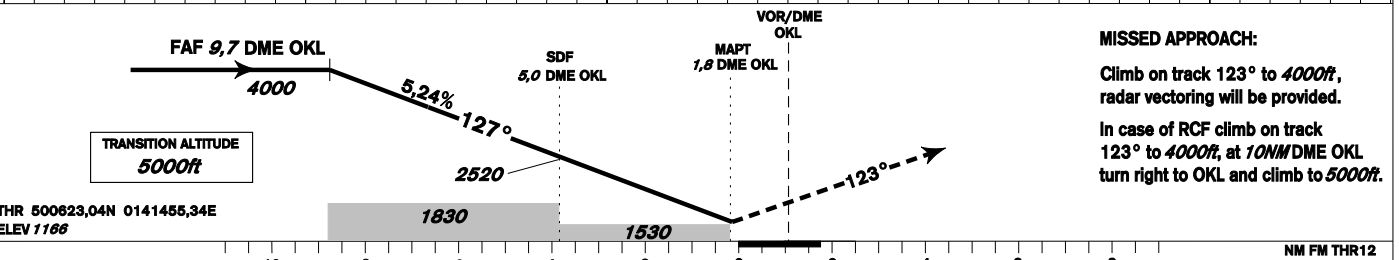
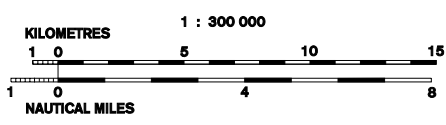


**PRAHA/Ruzyně
VOR Z
RWY 12**



AFTER IAF EVEMI TURN SPEED
LIMITED TO MAX IAS 210 KT

ŘEVNIČOV
DME 114,650
RVC
50°11'13"N
013°47'30"E
1700 ft



MISSED APPROACH:
Climb on track 123° to 4000ft, radar vectoring will be provided.
In case of RCF climb on track 123° to 4000ft, at 10NM/DME OKL turn right to OKL and climb to 5000ft.

THR 500823,04N 0141455,34E
ELEV 1166

OCA/OCH	A	B	C	D	
Straight - in Approach	ft	1530 / 370			
Circling	see the circling approach chart				

DIST OKL	NM	(FAF 9,65)	9	8	7	6	5	4	3	2
DIST THR	NM	8,75	8,1	7,1	6,1	5,1	4,1	3,1	2,1	1,1
ALT	ft	4000	3790	3470	3160	2840	2520	2200	1880	1560

GS	kt	80	100	120	140	160	180
FAF - MAPt 7,8 NM	min:sec	5:52	4:42	3:55	3:21	2:56	2:37
Rate of descent (5,24%)	ft/min	420	530	640	740	850	960

Timing is not authorized for defining the MAPt.

