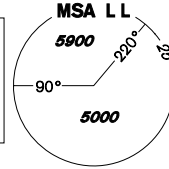


INSTRUMENT APPROACH CHART - ICAO

AERODROME ELEV **1989**
THR RWY 11 ELEV **1988**
OCH RELATED TO THR RWY 11

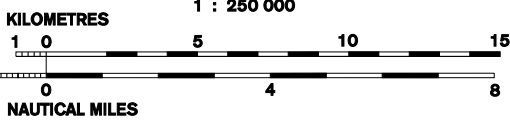
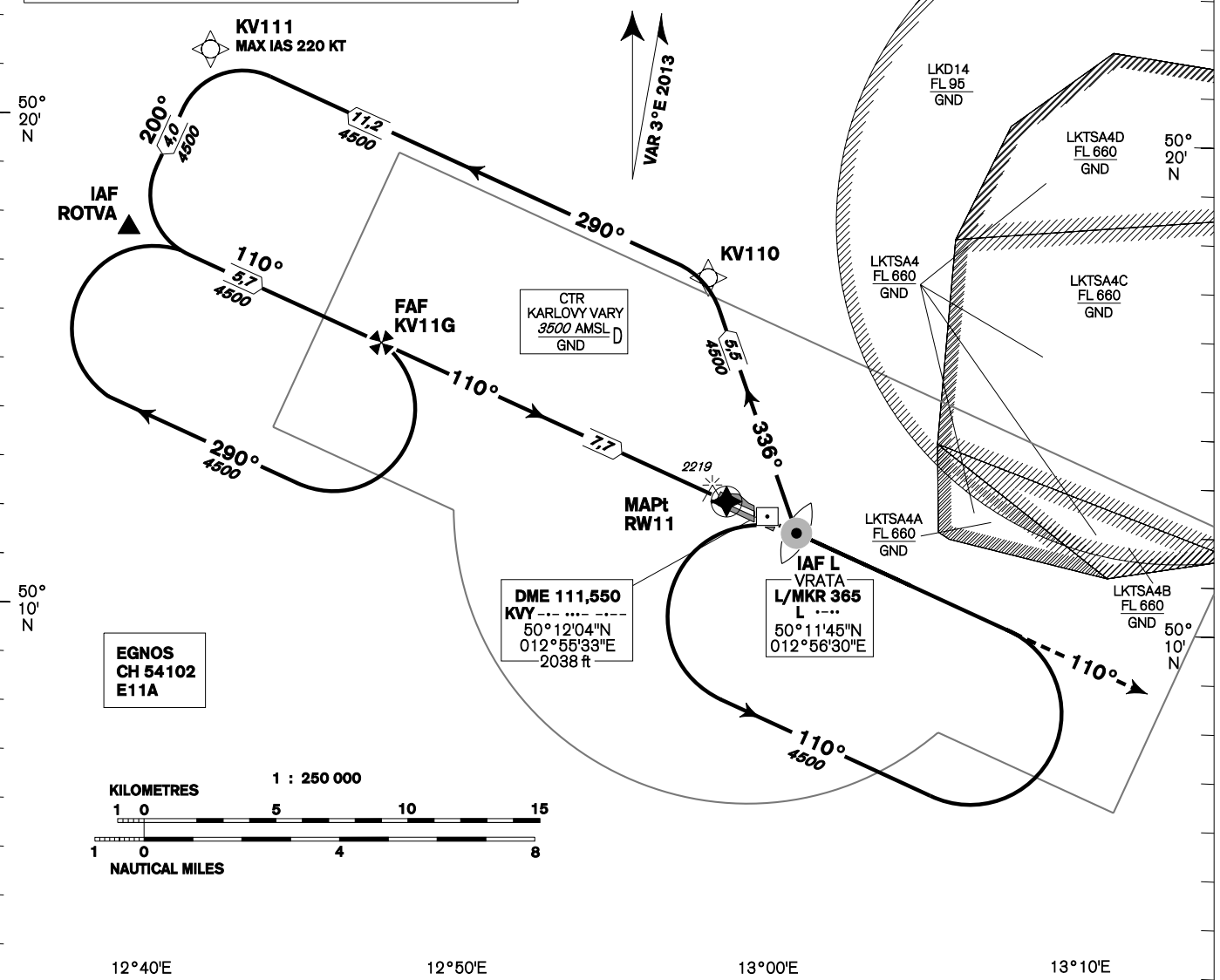
KARLOVY VARY
APPROACH/RADAR **118,650**
119,955
KARLOVY VARY TOWER **121,230**
121,500



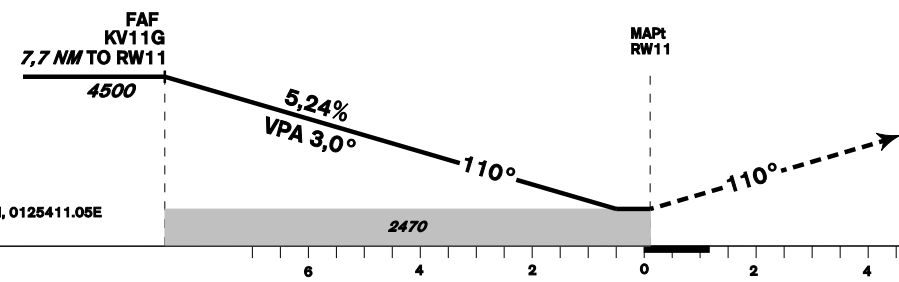
KARLOVY VARY RNAV (GNSS) RWY 11

**MINIMUM TEMPERATURE FOR
BARO-VNAV OPERATIONS: - 20 °C**

BEARINGS, TRACKS AND RADIALS ARE MAGNETIC
ALTITUDES AND ELEVATIONS IN *FEET* AND DISTANCES ARE IN *NM*



12°40'E 12°50'E 13°00'E 13°10'E



MISSED APPROACH:
Climb on track 110° to 4500 ft AMSL and expect vectoring.
In case of RCF climb on track 110°, at 4500 ft AMSL turn right to L.L.

TRANSITION ALTITUDE **5000ft** RDH **49,2**

THR 501222.84N, 012541.05E
ELEV 1988
NM FROM THR 11

OCA/OCH	A	B	C	D
LNAV	ft 2470/490			
LNAV / VNAV	ft 2430/450			
LPV	ft 2349/360	2361/372	2369/380	2380/391
Circling (south of AD only)	ft 2520/540	2800/820	3350/1370	3570/1590

DIST THR (MAPt)	7	6	5	4	3	2
ALTITUDES ft	4260	3940	3630	3310	2990	2670
kt	80	100	120	140	160	180
min:sec	5:48	4:39	3:52	3:19	2:54	2:35
Rate of descent (5,24%)	ft/min 420	530	640	740	850	960

Timing is not authorised for determining the MAPt

change: vertical and horizontal limits of CTR KARLOVY VARY, new LKD14

Posloupnost traťových bodů / Way point sequence

Od / From IAF ROTVA		
ROTVA	IAF	fly-by
KV11G	FAF	fly-by
RW11	MAPt	fly-over

Od / From IAF L L		
L L	IAF	fly-by
KV110		fly-by
KV111		fly-by
ROTVA		fly-by
KV11G	FAF	fly-by
RW11	MAPt	fly-over

Seznam traťových bodů / Way point list	
ROTVA	50 17 36,71 N 012 34 55,67 E
KV110	50 16 55,30 N 012 53 27,59 E
KV111	50 21 17,57 N 012 37 21,03 E
KV11G	50 15 23,91 N 012 43 05,90 E
L L	50 11 44,84 N 012 56 30,07 E

SBAS FAS Data Block

Vstupní data / Input Data

Parametry / Parameters	Hodnoty / Values
Operation Type	0
SBAS Provider	1
Airport Identifier	LKKV
Runway	11
Runway Direction	0
Approach Performance Designator	0
Route Indicator	
Reference Path Data Selector	0
Reference Path Identifier	E11A
LTP/FTP Latitude	501222.8390N
LTP/FTP Longitude	0125411.0480
LTP/FTP Ellipsoidal Height (metres)	652.2
FPAP Latitude	501157.3150N
Delta FPAP Latitude (seconds)	-25.5240
FPAP Longitude	0125544.2950E
Delta FPAP Longitude (seconds)	93.2470
Threshold Crossing Height	15.00
TCH Units Selector	1
Glidepath Angle (degrees)	3.00
Course Width (metres)	105.00
Length Offset (metres)	0
HAL (metres)	40.0
VAL (metres)	50.0

Výstupní data / Output Data

Parametry / Parameters	Hodnoty / Values
Data Block	10 16 0B 0B 0C 0B 00 00 01 31 31 05 6E D5 8B 15 D0 92 89 05 7A 2D 98 38 FF 7E D8 02 2C 81 2C 01 64 00 C8 FA 23 EF 33 2C
Calculated CRC Value	23EF332C

Required Additional Data (not CRC wrapped)

Parametry / Parameters	Hodnoty / Values
ICAO Code	LK
LTP/FTP Orthometric Height (metres)	605.8
FPAP Orthometric Height (metres)	605.0