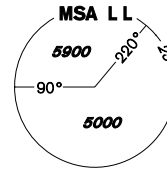


INSTRUMENT APPROACH CHART - ICAO

AERODROME ELEV 1989
THR RWY 29 ELEV 1985
OCH RELATED TO THR RWY 29

KARLOVY VARY
APPROACH/RADAR 118,650
119,955
KARLOVY VARY TOWER 121,230
121,500

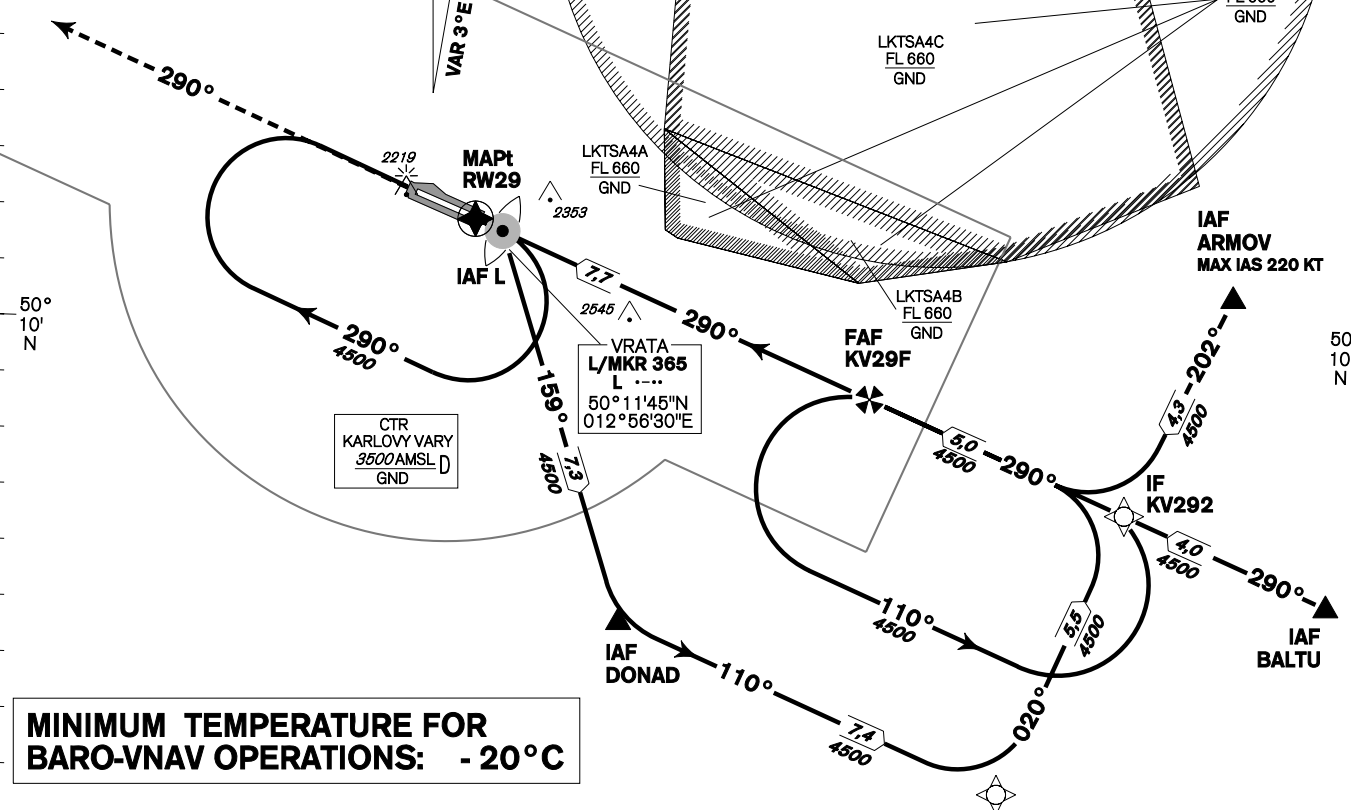


KARLOVY VARY RNAV (GNSS) RWY 29

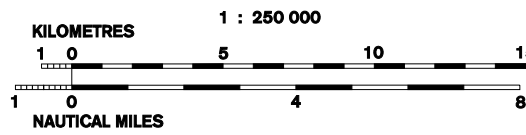
BEARINGS, TRACKS AND RADIALS ARE MAGNETIC
ALTITUDES AND ELEVATIONS IN FEET AND DISTANCES ARE IN NM

EGNOS
CH 48467
E29A

VAR 3°E 2013



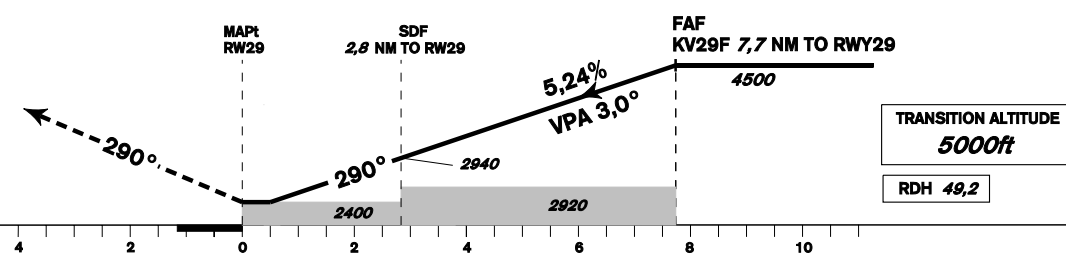
**MINIMUM TEMPERATURE FOR
BARO-VNAV OPERATIONS: - 20°C**



change: vertical and horizontal limits of CTR KARLOVY VARY, new LKD14

MISSED APPROACH:
Climb on track 290° to 4500 ft AMSL
and expect vectoring.
In case of RCF
climb on track 290°, at 4500 ft AMSL
turn left to L L.

THR 501157.32N, 0125544.30E
ELEV 1985
NM FROM THR 29



OCA/OCH	A	B	C	D	
LNAV	ft	2400/ 420			
LNAV / VNAV	ft	2383/ 398			
LPV	ft	2235/ 250	2243/ 258	2251/ 266	2261/ 276
Circling (south of AD only)	ft	2520/ 540	2800/ 820	3350/ 1370	3570/ 1590

DIST THR (MAPt)	7	6	5	4	3	2	1
ALTITUDES ft	4260	3940	3630	3310	2990	2670	2350
	kt	80	100	120	140	160	180
FAF - MAPt 7,7 NM	min:sec	5:48	4:39	3:52	3:19	2:54	2:35
Rate of descent (5,24%)	ft/min	420	530	640	740	850	960

Timing is not authorised for determining the MAPt

Posloupnost traťových bodů / Way point sequence

Od / From IAF ARMOV		
ARMOV	IAF	fly-by
KV292	IF	fly-by
KV29F	FAF	fly-by
RW29	MAPt	fly-over

Od / From IAF DONAD		
DONAD	IAF	fly-by
KV291		fly-by
KV292	IF	fly-by
KV29F	FAF	fly-by
RW29	MAPt	fly-over

Seznam traťových bodů / Way point list	
ARMOV	50 10 50,76 N 013 16 50,52 E
BALTU	50 05 22,06 N 013 19 35,48 E
DONAD	50 04 50,93 N 013 00 00,00 E
KV291	50 01 55,29 N 013 10 35,25 E
KV292	50 06 56,23 N 013 13 56,91 E
KV29F	50 08 54,77 N 013 06 48,58 E
L L	50 11 44,84 N 012 56 30,07 E

Od / From IAF BALTU		
BALTU	IAF	fly-by
KV292	IF	fly-by
KV29F	FAF	fly-by
RW29	MAPt	fly-over

Od / From IAF L L		
L L	IAF	fly-by
DONAD		fly-by
KV291		fly-by
KV292	IF	fly-by
KV29F	FAF	fly-by
RW29	MAPt	fly-over

SBAS FAS Data Block

Vstupní data / Input Data

Parametry / Parameters	Hodnoty / Values
Operation Type	0
SBAS Provider	1
Airport Identifier	LKKV
Runway	29
Runway Direction	0
Approach Performance Designator	0
Route Indicator	
Reference Path Data Selector	0
Reference Path Identifier	E29A
LTP/FTP Latitude	501157.3150N
LTP/FTP Longitude	0125544.2950E
LTP/FTP Ellipsoidal Height (metres)	651.4
FPAP Latitude	501222.8390N
Delta FPAP Latitude (seconds)	25.5240
FPAP Longitude	0125411.0480E
Delta FPAP Longitude (seconds)	-93.2470
Threshold Crossing Height	15.00
TCH Units Selector	1
Glidepath Angle (degrees)	3.00
Course Width (metres)	105.00
Length Offset (metres)	0
HAL (metres)	40.0
VAL (metres)	50.0

Výstupní data / Output Data

Parametry / Parameters	Hodnoty / Values
Data Block	10 16 0B 0B 0C 1D 00 00 01 39 32 05 06 0E 8B 15 4E 6B 8C 05 72 2D 68 C7 00 82 27 FD 2C 81 2C 01 64 00 C8 FA DF BA C9 A0
Calculated CRC Value	DFBAC9A0

Required Additional Data (not CRC wrapped)

Parametry / Parameters	Hodnoty / Values
ICAO Code	LK
LTP/FTP Orthometric Height (metres)	605.0
FPAP Orthometric Height (metres)	605.8