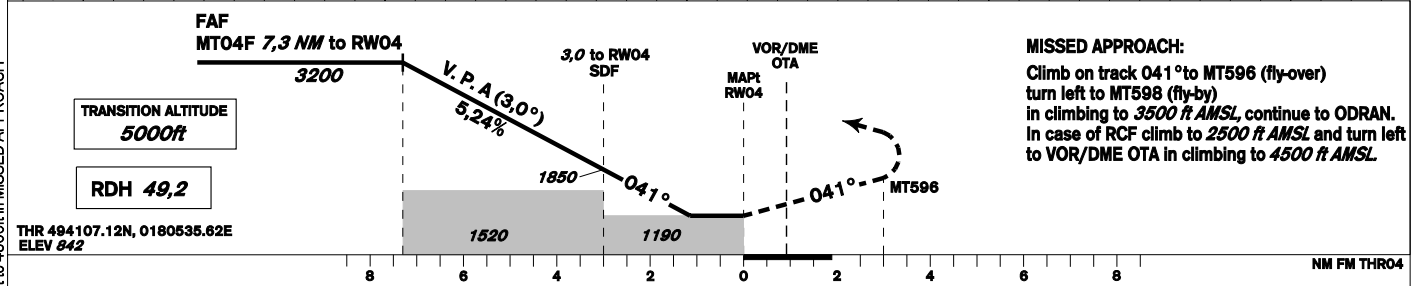
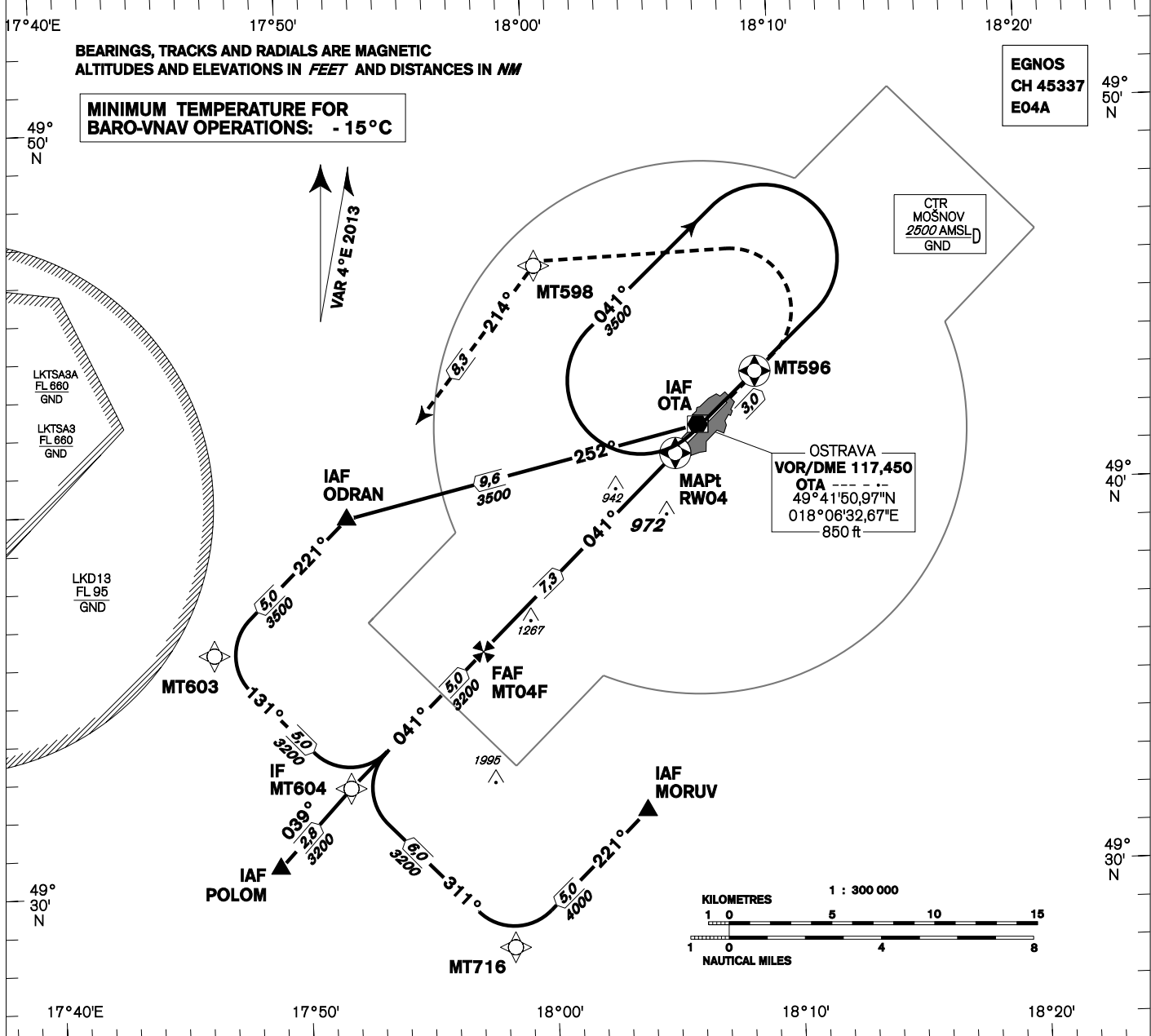


<b>INSTRUMENT APPROACH CHART - ICAO</b>	AERODROME ELEV <b>844</b> THR RWY 04 ELEV <b>842</b>  OCH RELATED TO AD ELEV	OSTRAVA APPROACH/RADAR 119,375 124,050 121,500  MOŠNOV TOWER 120,805 121,500	<b>OSTRAVA/Mošnov RNAV(GNSS) RWY 04</b>  
---	---	---	--



OCA/OCH		A	B	C	D	FAF - MAPt (RW04) NM	7	6	5	4	3	2	1	
LNAV	ft		1190/350				ALTITUDES ft	3120	2800	2480	2160	1850	1530	1210
LNAV/VNAV	ft		1106/264					kt	80	100	120	140	160	180
LPV	ft		1082/250				FAF - MAPt (RW04) 7,3 NM	min:sec	5:26	4:21	3:38	3:06	2:43	2:25
Circling	ft	1400/560	1440/600	1640/790	2100/1260	Rate of descent	ft/min	420	530	640	740	850	960	

Timing is not authorized for defining the MAPt.

Posloupnost traťových bodů / Way point sequence

Od / From IAF POLOM		
POLOM	IAF	fly-by
MT604	IF	fly-by
MT04F	FAF	fly-by
RW04	MAPt	fly-over
MT596		fly-over
MT598		fly-by
ODRAN		fly-by

Od / From IAF ODRAN a / and IAF VOR/DME OTA		
VOR/DME OTA	IAF	fly-by
ODRAN	IAF	fly-by
MT603		fly-by
MT604	IF	fly-by
MT04F	FAF	fly-by
RW04	MAPt	fly-over
MT596		fly-over
MT598		fly-by
ODRAN		fly-by

Od / From IAF MORUV		
MORUV	IAF	fly-by
MT716		fly-by
MT604	IF	fly-by
MT04F	FAF	fly-by
RW04	MAPt	fly-over
MT596		fly-over
MT598		fly-by
ODRAN		fly-by

Seznam traťových bodů / Way point list	
MORUV	49 31 47,08 N 018 03 54,51 E
ODRAN	49 39 42,82 N 017 52 12,89 E
POLOM	49 30 37,51 N 017 49 02,68 E
VOR/DME OTA	49 41 50,97 N 018 06 32,67 E
MT596	49 43 11,33 N 018 08 56,02 E
MT598	49 46 10,76 N 018 00 09,40 E
MT603	49 36 15,10 N 017 46 40,55 E
MT604	49 32 39,25 N 017 52 00,00 E
MT716	49 28 19,92 N 017 58 22,29 E
MT04F	49 36 06,73 N 017 57 32,31 E
RW04	49 41 07,16 N 018 05 35,69 E

SBAS FAS Data Block

Vstupní data / Input Data

Parametry / Parameters	Hodnoty / Values
Operation Type	0
SBAS Provider	1
Airport Identifier	LKMT
Runway	04
Runway Direction	0
Approach Performance Designator	0
Route Indicator	
Reference Path Data Selector	0
Reference Path Identifier	E04A
LTP/FTP Latitude	494107.1200N
LTP/FTP Longitude	0180535.6200E
LTP/FTP Ellipsoidal Height (metres)	299.5
FPAP Latitude	494225.6600N
Delta FPAP Latitude (seconds)	78.5400
FPAP Longitude	0180742.4200E
Delta FPAP Longitude (seconds)	126.8000
Threshold Crossing Height	49.2
TCH Units Selector	0
Glidepath Angle (degrees)	3.00
Course Width (metres)	105.00
Length Offset (metres)	0
HAL (metres)	40.0
VAL (metres)	50.0

Výstupní data / Output Data

Parametry / Parameters	Hodnoty / Values
Data Block	10 14 0D 0B 0C 04 00 00 01 34 30 05 60 97 52 15 08 C8 C3 07 B3 1F 98 65 02 A0 DE 03 EC 01 2C 01 64 00 C8 FA 33 E1 58 79
Calculated CRC Value	33E15879

Required Additional Data (not CRC wrapped)

Parametry / Parameters	Hodnoty / Values
ICAO Code	LK
LTP/FTP Orthometric Height (metres)	256.5
FPAP Orthometric Height (metres)	246.3