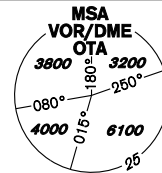


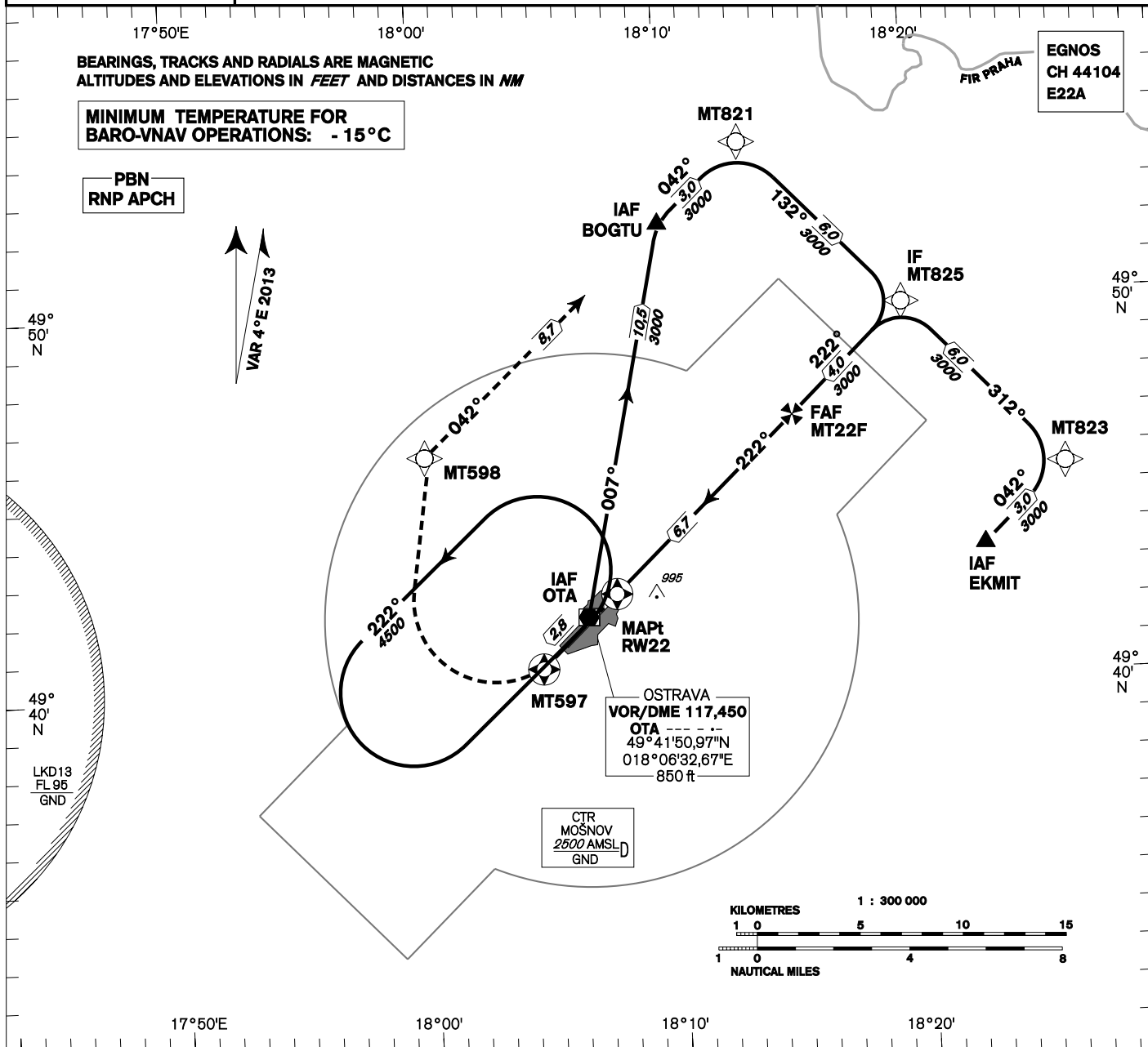
# INSTRUMENT APPROACH CHART - ICAO

AERODROME ELEV **844**  
THR RWY 22 ELEV **808**  
OCH RELATED TO THR RWY 22

OSTRAVA  
APPROACH/  
RADAR 119,375  
128,525  
121,500  
MOŠNOV TOWER 120,805  
121,500

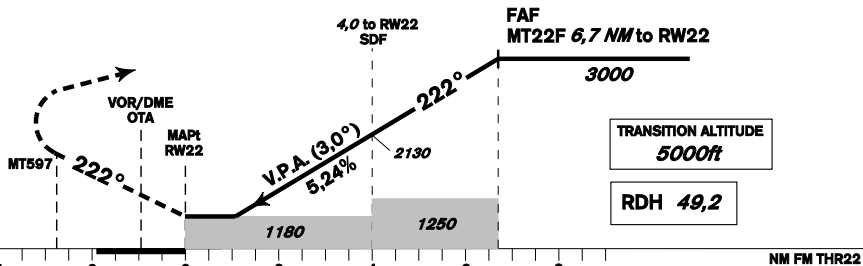


**OSTRAVA/Mošnov  
RNP  
RWY 22**



**MISSED APPROACH:**  
Climb on track 222° to MT597 (fly-over)  
turn right to MT598 (fly-by)  
In climbing to 3000 ft AMSL, continue to BOGTU.  
In case of RCF climb to 2500 ft AMSL and turn right  
to VOR/DME OTA in climbing to 4500 ft AMSL.

THR 494225.66N, 0180742.42E  
ELEV 808



change: chart name

| OCA/OCH   |    | A        | B        | C        | D         |
|-----------|----|----------|----------|----------|-----------|
| LNAV      | ft |          | 1180/370 |          |           |
| LNAV/VNAV | ft |          | 1083/285 |          |           |
| LPV       | ft | 1062/254 | 1074/266 | 1083/275 | 1093/285  |
| Circling  | ft | 1400/560 | 1440/600 | 1640/790 | 2100/1260 |

| DIST TO THR (RW22) NM    | 6       | 5    | 4    | 3    | 2    | 1    |      |
|--------------------------|---------|------|------|------|------|------|------|
| ALTITUDES ft             | 2770    | 2450 | 2130 | 1810 | 1500 | 1180 |      |
| FAF - MAPt (RW22) 6,7 NM | kt      | 80   | 100  | 120  | 140  | 160  | 180  |
| Rate of descent          | min:sec | 5:02 | 4:01 | 3:21 | 2:52 | 2:31 | 2:14 |
|                          | ft/min  | 420  | 530  | 640  | 740  | 850  | 960  |

Timing is not authorized for defining the MAPt.

Posloupnost traťových bodů / Way point sequence

| Od / From IAF BOGTU<br>a / and IAF VOR/DME OTA |      |          |
|--|------|----------|
| VOR/DME OTA                                    | IAF  | fly-by   |
| BOGTU  | IAF  | fly-by   |
| MT821  |      | fly-by   |
| MT825  | IF   | fly-by   |
| MT22F  | FAF  | fly-by   |
| RW22   | MAPt | fly-over |
| MT597  |      | fly-over |
| MT598  |      | fly-by   |
| BOGTU  |      | fly-by   |

| Od / From IAF EKMIT |      |          |
|---------------------|------|----------|
| EKMIT               | IAF  | fly-by   |
| MT823               |      | fly-by   |
| MT825               | IF   | fly-by   |
| MT22F               | FAF  | fly-by   |
| RW22                | MAPt | fly-over |
| MT597               |      | fly-over |
| MT598               |      | fly-by   |
| BOGTU               |      | fly-by   |

| Seznam traťových bodů / Way point list |                              |
|--|------------------------------|
| BOGTU                                  | 49 52 04,59 N 018 09 55,48 E |
| EKMIT                                  | 49 43 23,64 N 018 22 40,63 E |
| VOR/DME OTA                            | 49 41 50,97 N 018 06 32,67 E |
| MT597                                  | 49 40 31,74 N 018 04 38,75 E |
| MT598                                  | 49 46 10,76 N 018 00 09,40 E |
| MT821                                  | 49 54 08,55 N 018 13 16,88 E |
| MT823                                  | 49 45 27,22 N 018 26 01,91 E |
| MT825                                  | 49 49 48,05 N 018 19 39,97 E |
| MT22F                                  | 49 47 03,00 N 018 15 11,58 E |
| RW22                                   | 49 42 25,65 N 018 07 42,41 E |

SBAS FAS Data Block

Vstupní data / Input Data

| Parametry / Parameters              | Hodnoty / Values |
|-------------------------------------|------------------|
| Operation Type                      | 0                |
| SBAS Provider                       | 1                |
| Airport Identifier                  | LKMT             |
| Runway                              | 22               |
| Runway Direction                    | 0                |
| Approach Performance Designator     | 0                |
| Route Indicator                     |                  |
| Reference Path Data Selector        | 0                |
| Reference Path Identifier           | E22A             |
| LTP/FTP Latitude                    | 494225.6600N     |
| LTP/FTP Longitude                   | 0180742.4200E    |
| LTP/FTP Ellipsoidal Height (metres) | 289.3            |
| FPAP Latitude                       | 494107.1200N     |
| Delta FPAP Latitude (seconds)       | -78.5400         |
| FPAP Longitude                      | 0180535.6200E    |
| Delta FPAP Longitude (seconds)      | -126.8000        |
| Threshold Crossing Height           | 49.2             |
| TCH Units Selector                  | 0                |
| Glidepath Angle (degrees)           | 3.00             |
| Course Width (metres)               | 105.00           |
| Length Offset (metres)              | 0                |
| HAL (metres)                        | 40.0             |
| VAL (metres)                        | 50.0             |

Výstupní data / Output Data

| Parametry / Parameters | Hodnoty / Values   |
|------------------------|--|
| Data Block             | 10 14 0D 0B 0C 16 00 00 01 32<br>32 05 F8 FC 54 15 A8 A6 C7 07<br>4D 1F 68 9A FD 60 21 FC EC 01<br>2C 01 64 00 C8 FA 33 9E 41 BC |
| Calculated CRC Value   | 339E41BC   |

Required Additional Data (not CRC wrapped)

| Parametry / Parameters              | Hodnoty / Values |
|-------------------------------------|------------------|
| ICAO Code                           | LK               |
| LTP/FTP Orthometric Height (metres) | 246.3            |
| FPAP Orthometric Height (metres)    | 256.5            |