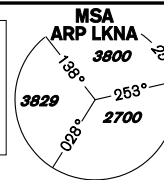


# INSTRUMENT APPROACH CHART - ICAO

AERODROME ELEV **1547**  
THR RWY 12 ELEV **1547**  
THR RWY 30 ELEV **1496**  
OCH RELATED TO THR RWY 30

NÁMEŠŤ APPROACH/ 118,155 266,200 reserve  
RADAR  
PRECISION 283,900 123,300 reserve  
TOWER 126,505 119,830 reserve



# NÁMEŠŤ ILS RWY 30

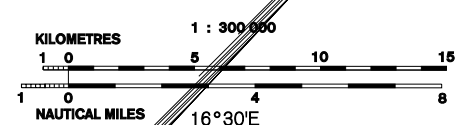
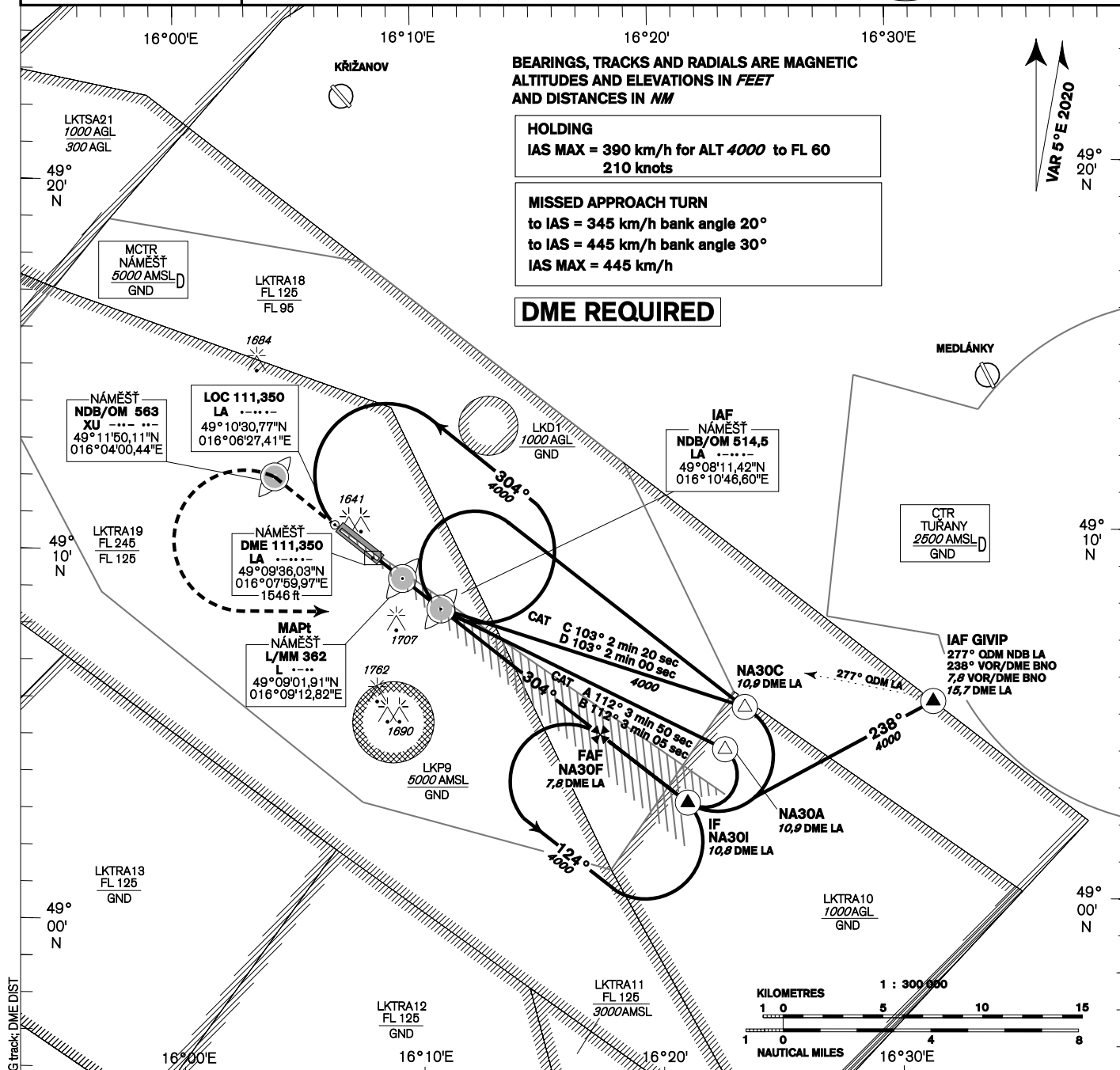
BEARINGS, TRACKS AND RADIALS ARE MAGNETIC  
ALTITUDES AND ELEVATIONS IN FEET  
AND DISTANCES IN NM

**HOLDING**  
IAS MAX = 390 km/h for ALT 4000 to FL 60  
210 knots

**MISSED APPROACH TURN**  
to IAS = 345 km/h bank angle 20°  
to IAS = 445 km/h bank angle 30°  
IAS MAX = 445 km/h

**DME REQUIRED**

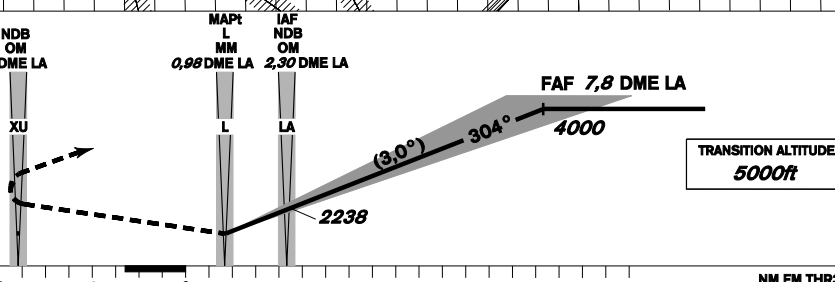
VAR 5°E 2020  
49° 20' N



**MISSED APPROACH:**  
Proceed to NDB XU  
in climbing 4000ft  
passing NDB XU turn left to NDB LA

ILS RDH 49,2 ft

THR 490933.73N 0160813.58E  
ELEV 1496  
DISTANCE IN NM FROM THR RWY 30



change: MAG VAR; RWY and Waypoint designations; MAG track; DME DIST

OCA/OCH		A	B	C	D			
Straight-in Approach	Cat 1	ft 1725 / 230	1736 / 240	1745 / 249	1755 / 259			
	GP INOP	1840 / 344						
Circling NORTH OF AD ONLY		ft 1936 R/-	1988 R/-	2086 R/-	2185 R/-			
DME LA	NM	6,0	5,0	4,0	3,0	2,0	1,0	0,8
ALTITUDES	ft	3406	3088	2769	2451	2133	1815	1752

kt	81	100	122	141	162	184
km/h	150	185	225	260	300	340
time FAF - MAPt 6,9 NM	min:sec 5:05	4:07	3:23	2:56	2:32	2:14
Rate of descent	m / s 2,2	2,7	3,3	3,8	4,4	5,0
	ft / min 433	532	650	748	866	984

Seznam traťových bodů / Way point list		
LA (NDB)	49 08 12 N	016 10 47 E
L (L)	49 09 02 N	016 09 13 E
NA30A	49 04 16 N	016 22 23 E
NA30C	49 05 24 N	016 23 14 E
NA30I	49 02 52 N	016 20 55 E
NA30F	49 04 44 N	016 17 31 E
XU (NDB)	49 11 50 N	016 04 00 E