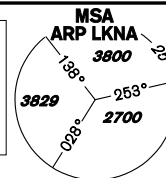


INSTRUMENT APPROACH CHART - ICAO

AERODROME ELEV **1547**
THR RWY 12 ELEV **1547**
THR RWY 30 ELEV **1496**
OCH RELATED TO THR RWY 12

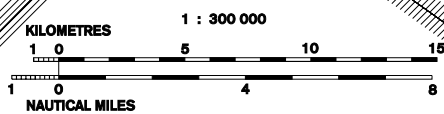
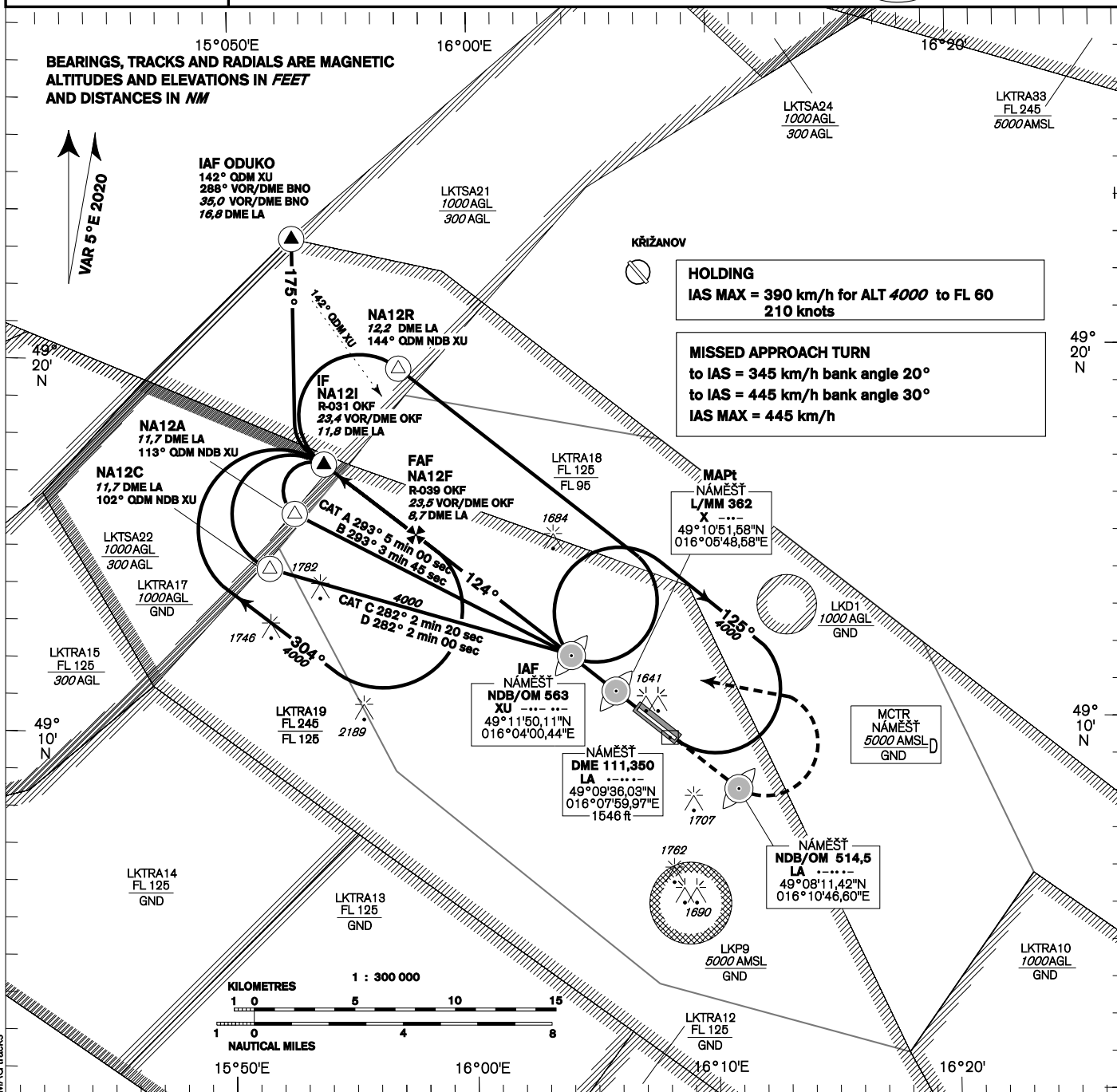
NÁMEŠŤ APPROACH/ 118,155 266,200 reserve
RADAR
PRECISION 283,900 123,300 reserve
TOWER 126,505 119,830 reserve



NÁMEŠŤ NDB RWY 12

BEARINGS, TRACKS AND RADIALS ARE MAGNETIC
ALTITUDES AND ELEVATIONS IN FEET
AND DISTANCES IN NM

VAR 5° E 2020



R-039 VOR/DME OKF
23,5 VOR/DME OKF
8,7 DME LA
FAF

IAF NDB OM XU 3,45 DME LA
MAPt L MM X 1,97 DME LA

NDB OM LA 2,3 DME LA

MISSED APPROACH:
Proceed to NDB LA
in climbing 4000ft
passing NDB turn left to NDB XU

In the case of RCF on final approach track
without landing clearance
follow the missed approach procedure

TRANSITION ALTITUDE
5000ft

THR 491022.96N 0160641.95E
ELEV 1547
DISTANCE IN NM FROM THR RWY 12

10 8 6 4 2 0 2 4 6 8 10 NM FM THR12

| | | | | | |
|-----------------------|--------|------|------------|------|------|
| OCA/OCH | | A | B | C | D |
| Straight-in Approach | NDB ft | | 1857 / 308 | | |
| | PAR ft | | 1857 / 308 | | |
| Circling (NORTH ONLY) | ft | 1936 | 1988 | 2086 | 2185 |

| | | | | | | |
|-----------------|----------|------|------|------|------|------|
| kt | 81 | 100 | 122 | 141 | 162 | 184 |
| km/h | 150 | 185 | 225 | 260 | 300 | 340 |
| min:sec | 5:05 | 4:07 | 3:23 | 2:56 | 2:32 | 2:14 |
| Rate of descent | m / s | 2,2 | 2,7 | 3,3 | 3,8 | 4,4 |
| | ft / min | 433 | 532 | 650 | 748 | 866 |

Timing is not authorized for defining the MAPt.

change: MAG VAR; RWY and Waypoint designations; MAG tracks

| Seznam traťových bodů / Way point list | | |
|--|------------|-------------|
| XU (NDB) | 49 11 50 N | 016 04 00 E |
| X (L) | 49 10 52 N | 016 05 49 E |
| NA12A | 49 15 44 N | 015 52 45 E |
| NA12C | 49 14 16 N | 015 51 42 E |
| NA12R | 49 19 36 N | 015 57 04 E |
| NA12I | 49 17 03 N | 015 53 58 E |
| NA12F | 49 15 08 N | 015 57 42 E |
| LA (NDB) | 49 08 12 N | 016 10 47 E |