

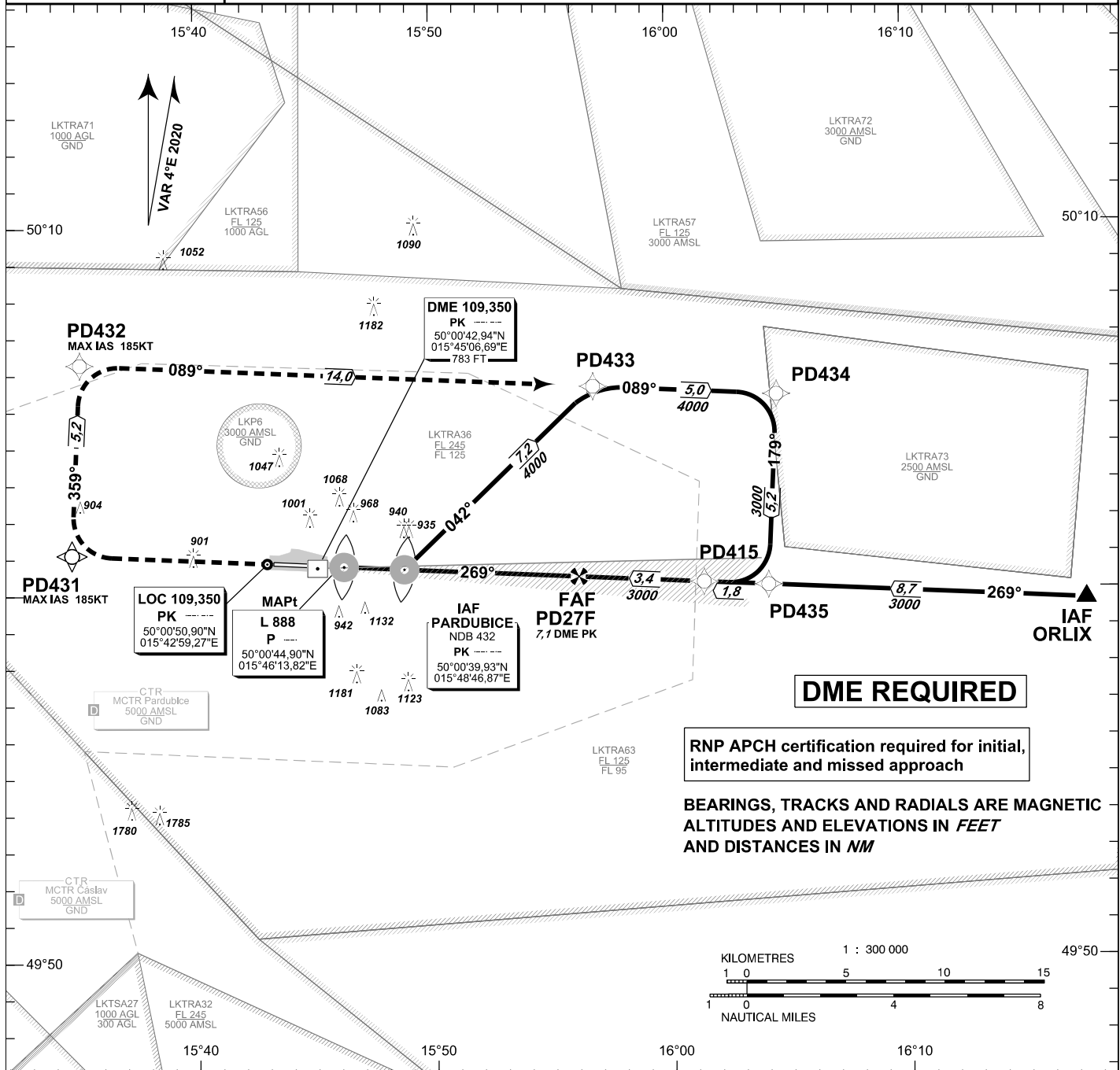
INSTRUMENT APPROACH CHART - ICAO

AERODROME ELEV 741
THR RWY 27 ELEV 731
OCH RELATED TO THR RWY 27

PARDUBICE		
RADAR	128,365	267,300 O/R
PRECISION	296,825 O/R	123,300 reserve
TOWER	120,155	120,205 reserve

**MSA
NDB PK**

PARDUBICE
ILS Y
RWY 27



MISSED APPROACH:
Climb straight ahead to PD431, turn right to PD432, turn right to PD433 and join Initial approach via PD434. Climb to 4000ft.
MA turn: MAX IAS limited to 185 kt

THR 500046.50N, 0154521.56E
ELEV 731

OCA/OCH			A	B	C	D										
Straight-in	CAT I	ft	889 / 168	912 / 181	920 / 189	930 / 199	DME PK NM	7	6	5	4	3	2	1		
Approach	LOC	ft	1070 / 340				ALTITUDES ft	2960	2640	2330	2010	1690	1370	1050		
Circling South of AD Only!		ft	1240 / 510	1430 / 700	1580 / 850	1730 / 1010			kt	80	100	120	140	160	180	
								FAF - MAPt 6,4 NM		min:sec	4:46	3:46	3:12	2:45	2:24	2:08
								Rate of descent		ft/min	430	540	650	750	860	970

Timing is not authorized for defining the MAPt.

Seznam traťových bodů / Way point list		
PD431	50 01 06,03 N	015 34 45,03 E
PD432	50 06 16,69 N	015 35 07,22 E
PD433	50 05 36,10 N	015 56 49,25 E
PD434	50 05 20,62 N	016 04 34,47 E
PD435	50 00 09,87 N	016 04 09,11 E
PD27F	50 00 25,78 N	015 56 09,06 E

