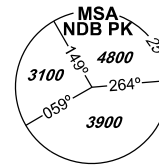


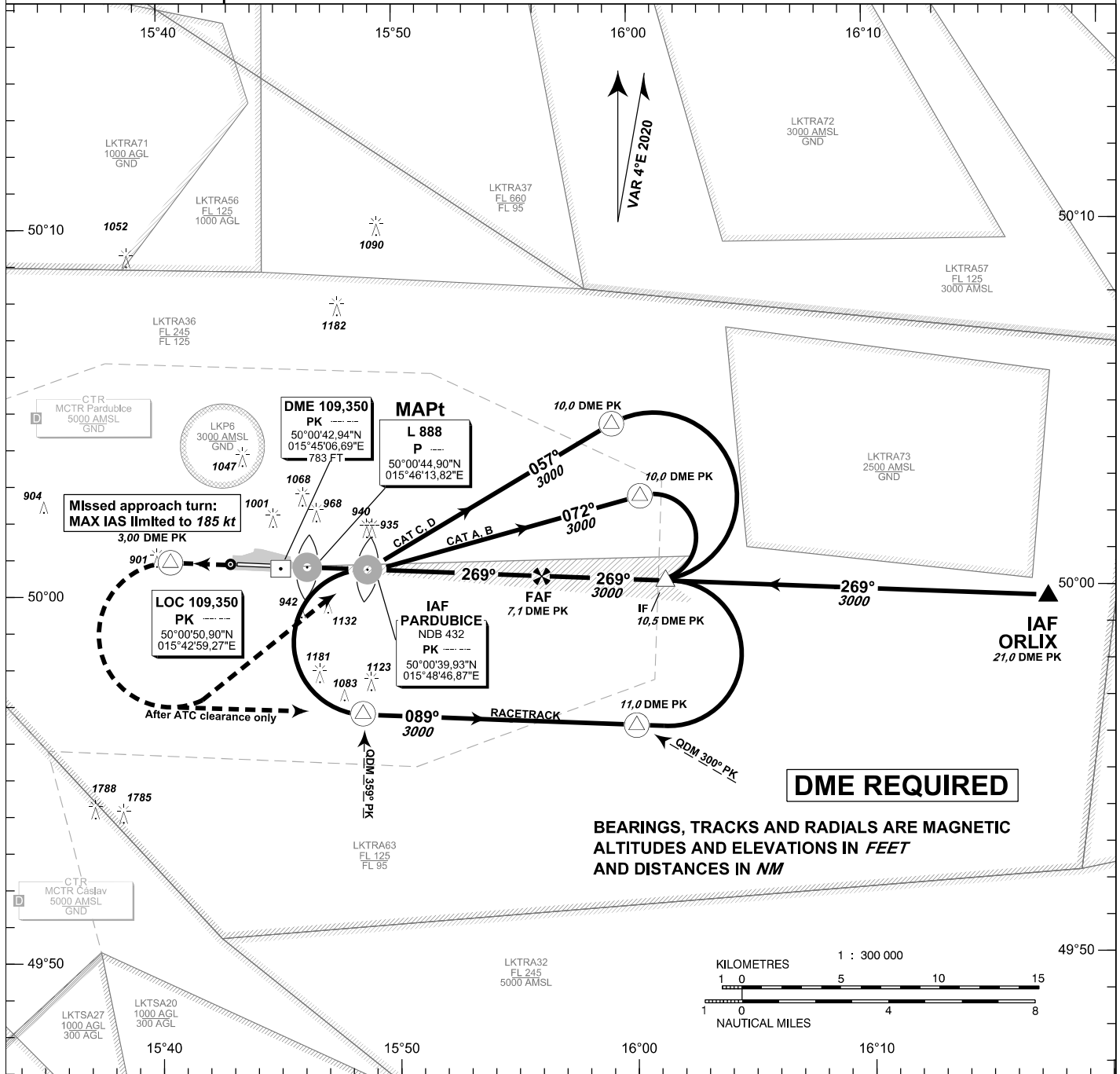
INSTRUMENT APPROACH CHART - ICAO

AERODROME ELEV 741
THR RWY 27 ELEV 731
OCH RELATED TO THR RWY 27

PARDUBICE	
RADAR	128,365 267,300 O/R
PRECISION	296,825 O/R 123,300 reserve
TOWER	120,155 120,205 reserve

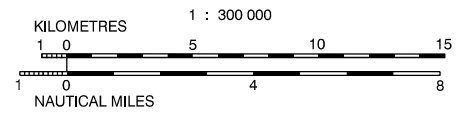


PARDUBICE ILS Z RWY 27



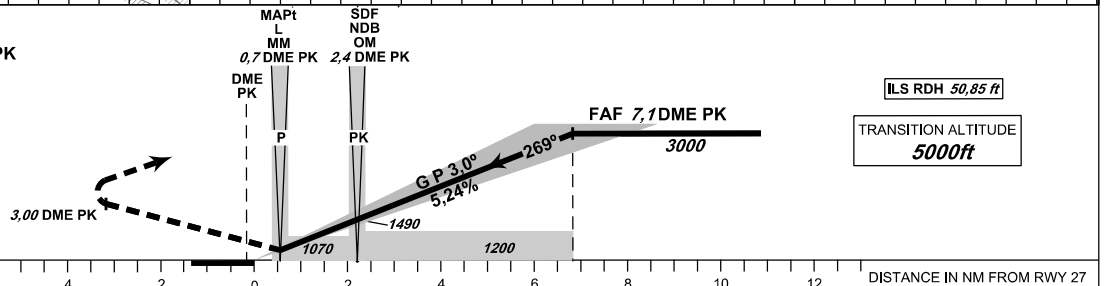
DME REQUIRED

BEARINGS, TRACKS AND RADIALS ARE MAGNETIC
 ALTITUDES AND ELEVATIONS IN FEET
 AND DISTANCES IN NM



MISSED APPROACH:
 Climb straight ahead to 3,0 DME PK
 turn left to NDB PK
 In climbing to 3000ft AMSL
 or according to ATC clearance
 MA turn: MAX IAS limited to 185 kt

THR 500046.50N, 0154521.56E
 ELEV 731



OCA/OCH		A	B	C	D
Straight-in	CAT I	ft 899 / 168	912 / 181	920 / 189	930 / 199
Approach	LOC	ft 1070 / 340			
Circling South of AD Only!		ft 1240 / 510	1430 / 700	1580 / 850	1730 / 1010

DME PK	NM	7	6	5	4	3	2	1
ALTITUDES	ft	2960	2640	2330	2010	1690	1370	1050

kt	80	100	120	140	160	180	
FAF-MAPT 6,4 NM	min:sec	4:46	3:46	3:12	2:45	2:24	2:08
Rate of descent	ft/min	430	540	650	750	860	970

change: chart revision

Timing is not authorized for defining the MAPt.