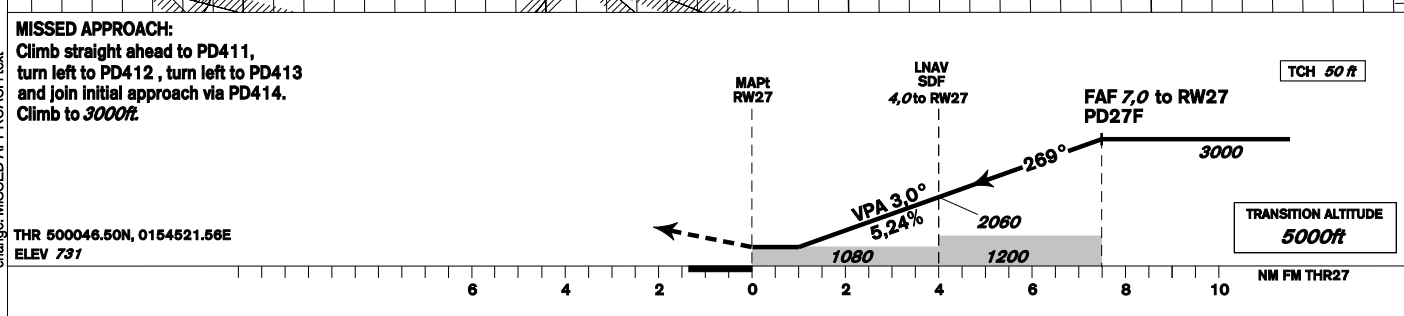
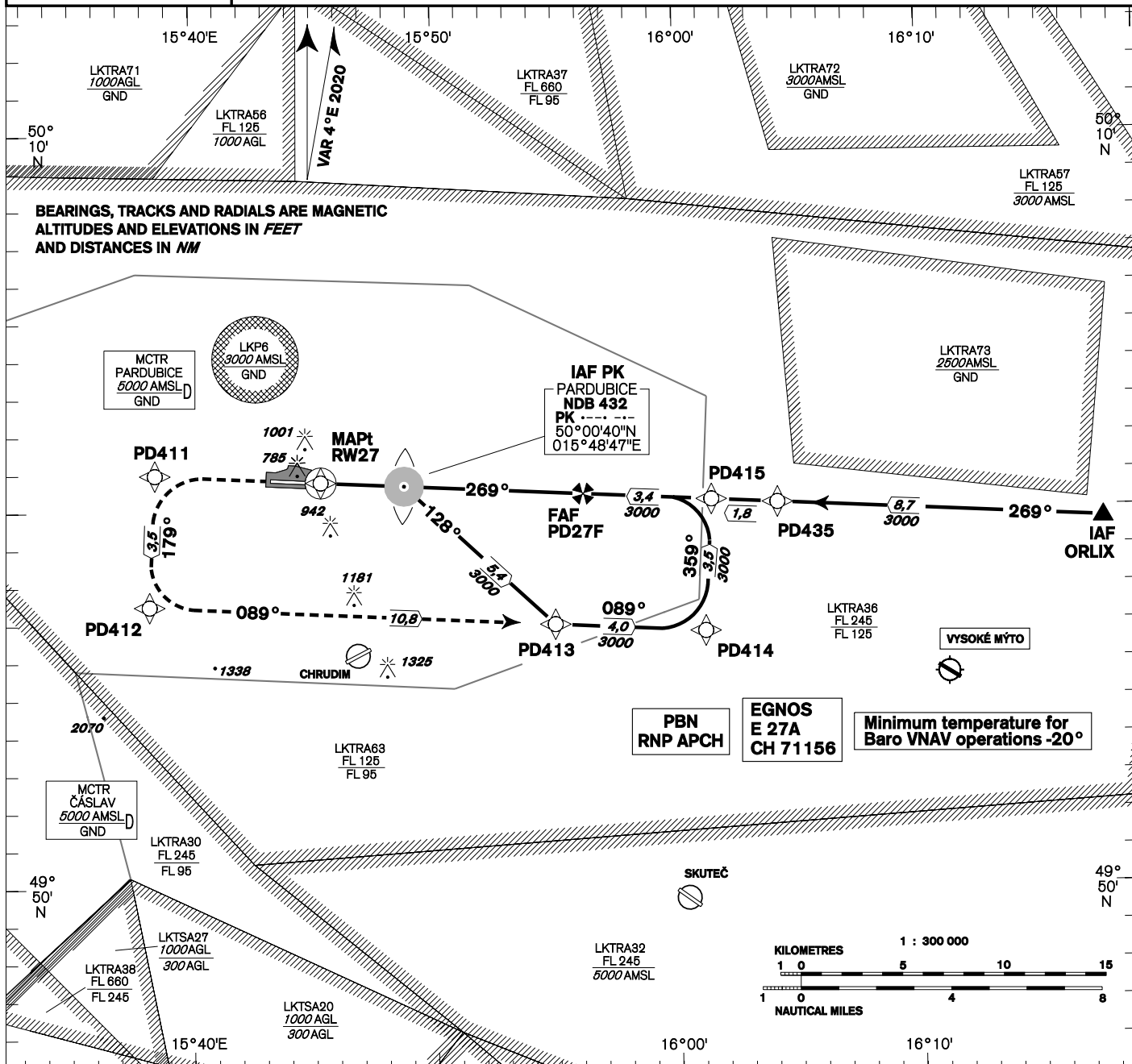


INSTRUMENT APPROACH CHART - ICAO	AERODROME ELEV 741 THR RWY 27 ELEV 731 OCH RELATED TO THR RWY 27	PARDUBICE MTWR 120,155 MTWR (reserve) 120,205 MAPP 128,365 267,300 O/R	<div style="text-align: center;"> </div> <div style="text-align: right; font-weight: bold;"> PARDUBICE RNP Z CAT A, B RWY 27 </div>
---	---	---	--



OCA/OCH		A	B
LNAV	ft	1080 / 350	
LNAV / VNAV	ft	1075 / 345	
LPV	ft	931 / 200	
Circling (South of AD Only)	ft	1240 / 510	1430 / 700

DIST TO THR (RWY27)	7	6	5	4	3	2	1
ALTITUDES ft	3000	2690	2370	2060	1740	1420	1100
	kt	80	100	120	140	160	180
FAF - MAPt 7,0 NM	min:sec	5:14	4:11	3:30	3:00	2:37	2:20
Rate of descent	ft/min	430	540	650	750	860	970

Timing is not authorized for defining the MAPt.

Seznam traťových bodů / Way point list		
PD411	50 00 59,09 N	015 38 30,89 E
PD412	49 57 29,52 N	015 38 15,69 E
PD413	49 56 58,10 N	015 54 57,88 E
PD414	49 56 45,85 N	016 01 08,96 E
PD415	50 00 15,36 N	016 01 25,81 E
PD27F	50 00 25,78 N	015 56 09,06 E

SBAS FAS Data Block

Vstupní data / Input Data

Parametry / Parameters	Hodnoty / Values
Operation Type	0
SBAS Provider	1 (EGNOS)
Airport Identifier	LKPD
Runway	27
Runway Letter	0 (None)
Approach Performance Designator	0
Route Indicator	Z
Reference Path Data Selector	0
Reference Path Identifier	E27A
LTP/FTP Latitude	500046.5000N
LTP/FTP Longitude	0154521.5600E
LTP/FTP Ellipsoidal Height (metres)	267.1
FPAP Latitude	500050.3900N
Delta FPAP Latitude (seconds)	3.8900
FPAP Longitude	0154316.1400E
Delta FPAP Longitude (seconds)	-125.4200
Threshold Crossing Height	50.0
TCH Units Selector	0 (feet)
Glidepath Angle (degrees)	3.00
Course Width (metres)	105.00
Length Offset (metres)	0
HAL (metres)	40.0
VAL (metres)	35.0

Výstupní data / Output Data

Parametry / Parameters	Hodnoty / Values
Data Block	10 04 10 0B 0C 1B D0 00 01 37 32 05 48 95 76 15 30 01 C3 06 6F 1E 64 1E 00 28 2C FC F4 01 2C 01 64 00 C8 AF F5 DC 08 1C
Calculated CRC Value	F5DC081C

Required Additional Data (not CRC wrapped)

Parametry / Parameters	Hodnoty / Values
ICAO Code	LK
LTP/FTP Orthometric Height (metres)	222.9