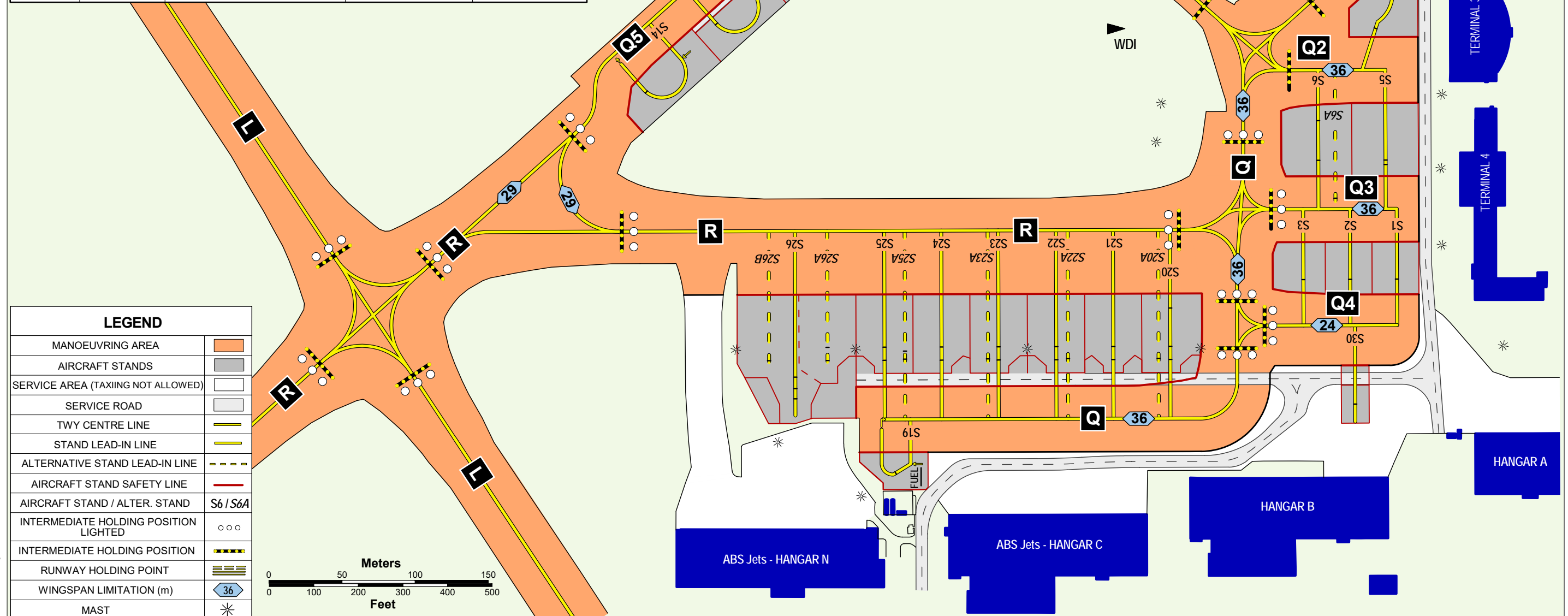


DELIVERY GROUND TWR	120,060 121,910 134,560	S1 - S9 APRON ELEV 1197 ft / 365 m	S14 - S17 APRON ELEV 1191 ft / 363 m	S19 - S26 APRON ELEV 1201 ft / 366 m
---------------------	-------------------------------	---------------------------------------	---	---

PARKING STANDS AND TAXIING ON APRON SOUTH

PRAHA/Ruzyně

STANDS	WING SPAN (m)	INS COORDINATES		NOTICE	
S1	24	50°05'51,61"N	014°17'10,28"E	50°05,9'N 014°17,2'E	
S2	24	50°05'51,40"N	014°17'08,70"E	50°05,9'N 014°17,2'E	
S3	24	50°05'51,20"N	014°17'07,12"E	50°05,9'N 014°17,1'E	
S5	36	50°05'54,10"N	014°17'09,12"E	50°05,9'N 014°17,2'E	
S6	32	50°05'51,20"N	014°17'07,12"E	50°05,9'N 014°17,1'E	
S6A	65 + 74H	50°05'53,10"N	014°17'07,66"E	50°05,9'N 014°17,1'E	alternative stand
S9	29	50°05'56,96"N	014°17'07,89"E	50°05,9'N 014°17,1'E	
S14	24	50°05'52,50"N	014°16'43,70"E	50°05,9'N 014°16,7'E	stand available SR-SS
S15	24	50°05'54,26"N	014°16'45,60"E	50°05,9'N 014°16,8'E	stand available SR-SS
S16	24	50°05'55,81"N	014°16'47,41"E	50°05,9'N 014°16,8'E	stand available SR-SS
S17	24	50°05'57,34"N	014°16'49,28"E	50°06,0'N 014°16,8'E	stand available SR-SS
S19	15	50°05'45,27"N	014°16'54,62"E	50°05,8'N 014°16,9'E	stand available SR-SS
S20	29	50°05'49,05"N	014°17'03,11"E	50°05,8'N 014°17,1'E	
S20A	36	50°05'48,88"N	014°17'02,75"E	50°05,8'N 014°17,0'E	alternative stand
S21	29	50°05'48,80"N	014°17'01,18"E	50°05,8'N 014°17,0'E	
S22	29	50°05'48,56"N	014°16'59,26"E	50°05,8'N 014°17,0'E	
S22A	36	50°05'48,49"N	014°16'59,69"E	50°05,8'N 014°17,0'E	alternative stand
S23	29	50°05'48,31"N	014°16'57,31"E	50°05,8'N 014°17,0'E	
S23A	36	50°05'48,14"N	014°16'56,99"E	50°05,8'N 014°16,9'E	alternative stand
S24	29	50°05'48,06"N	014°16'55,38"E	50°05,8'N 014°16,9'E	
S25	29	50°05'47,82"N	014°16'53,46"E	50°05,8'N 014°16,9'E	
S25A	36 + LOH	50°05'47,87"N	014°16'54,16"E	50°05,8'N 014°16,9'E	alternative stand
S26	65 + 74H	50°05'46,69"N	014°16'50,67"E	50°05,8'N 014°16,8'E	
S26A	29	50°05'47,57"N	014°16'51,53"E	50°05,8'N 014°16,9'E	alternative stand
S26B	31	50°05'47,17"N	014°16'49,60"E	50°05,8'N 014°16,8'E	alternative stand
S30	13	50°05'48,72"N	014°17'09,69"E	50°05,8'N 014°17,2'E	stand available SR-SS



VAE 5 F 2022
ANNUAL RATE
OF CHANGE 10'

LEGEND	
MANOEUVRING AREA	
AIRCRAFT STANDS	
SERVICE AREA (TAXIING NOT ALLOWED)	
SERVICE ROAD	
TWY CENTRE LINE	
STAND LEAD-IN LINE	
ALTERNATIVE STAND LEAD-IN LINE	
AIRCRAFT STAND SAFETY LINE	
AIRCRAFT STAND / ALTER. STAND	S6 / S6A
INTERMEDIATE HOLDING POSITION LIGHTED	
INTERMEDIATE HOLDING POSITION	
RUNWAY HOLDING POINT	
WINGSPAN LIMITATION (m)	
MAST	

change: FATO2 / TLOF 2