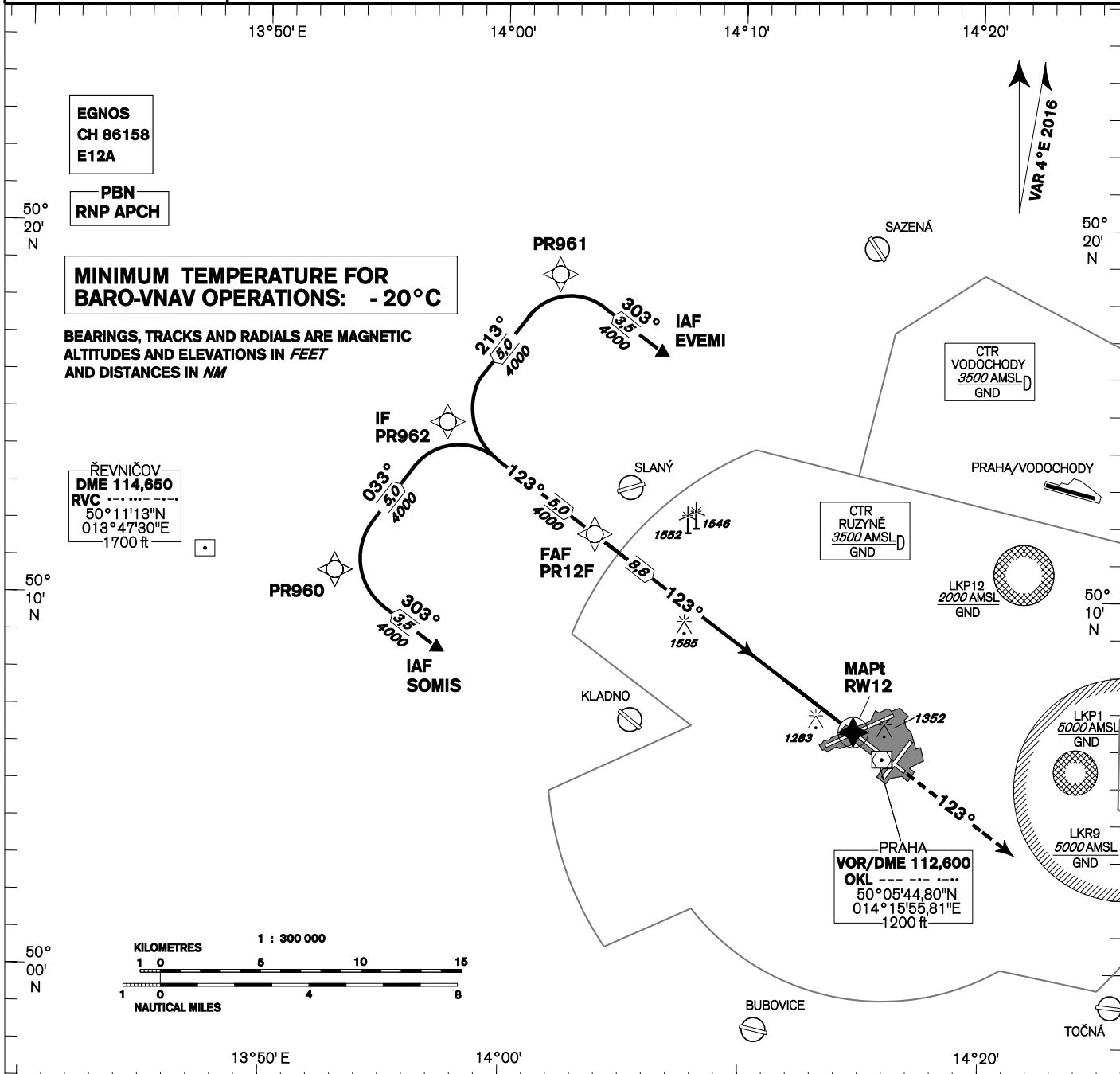


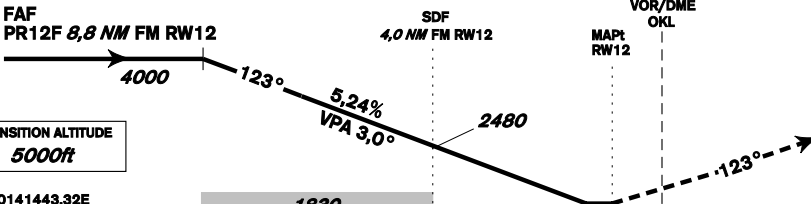
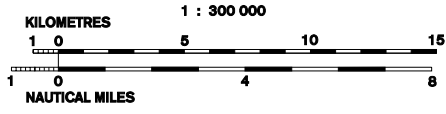
INSTRUMENT APPROACH CHART - ICAO	AERODROME ELEV 1234 THR RWY 12 ELEV 1160 OCH RELATED TO THR RWY 12	PRAHA RADAR 127,580 RUZYŇ RADAR 119,010 SUPPLEMENTARY FREQ 136,080 121,500 RUZYŇ TOWER 134,560 SUPPLEMENTARY FREQ 118,110 121,500	<div style="text-align: center;"> MSA VOR/DME OKL </div>	PRAHA/Ruzyň RNP <div style="border: 1px solid black; padding: 2px; display: inline-block;">RWY 12</div>
-------------------------------------------------	---------------------------------------------------------------------------------------------------	------------------------------------------------------------------------------------------------------------------------------------------------------------------------------------------------------	-----------------------------------------------------------------------------------------	--------------------------------------------------------------------------------------------------------------------------------------------



MINIMUM TEMPERATURE FOR BARO-VNAV OPERATIONS: - 20°C

BEARINGS, TRACKS AND RADIALS ARE MAGNETIC
ALTITUDES AND ELEVATIONS IN FEET
AND DISTANCES IN NM

ŘEVNIČOV
DME 114,650
RVC
50°11'13"N
013°47'30"E
1700 ft



MISSED APPROACH:
Climb on track 123° to 4000ft, radar vectoring will be provided.
In case of RCF climb on track 123° to 4000ft, at 10NM DME OKL turn right to OKL and climb to 5000ft.

THR 500628,84N 0141443,32E
ELEV 1160

OCA/OCH		A	B	C	D
LNAV	ft	1530 / 370			
LNAV / VNAV	ft	1453 / 293			
LPV	ft	1360 / 200			
Circling		see the circling approach chart			

DIST THR (MAPt) NM		10	9	8	7	6	5	4	3	2	1
ALTITUDES ft		4390	4070	3780	3440	3120	2800	2480	2160	1850	1530

		kt	80	100	120	140	160	180
FAF - MAPt 8,8 NM	min:sec	6:34	5:16	4:23	3:45	3:17	2:55	
Rate of descent	ft/min	420	530	640	740	850	960	

Timing is not authorized for defining the MAPt.

change: horizontal limits of CTR RUZYŇ

Posloupnost traťových bodů / Way point sequence

Od / From IAF SOMIS		
SOMIS	IAF	fly-by
PR960		fly-by
PR962	IF	fly-by
PR12F	FAF	fly-by
RW12	MAPt	fly-over

Od / From IAF EVEMI		
EVEMI	IAF	fly-by
PR961		fly-by
PR962	IF	fly-by
PR12F	FAF	fly-by
RW12	MAPt	fly-over

Seznam traťových bodů / Way point list	
SOMIS	50 08 38,56 N 013 57 15,18 E
EVEMI	50 16 38,86 N 014 06 33,88 E
PR960	50 10 41,95 N 013 52 57,01 E
PR961	50 18 42,62 N 014 02 15,30 E
PR962	50 14 42,39 N 013 57 35,78 E
PR12F	50 11 44,17 N 014 03 49,30 E
RW12	50 06 28,84 N 014 14 43,32 E

SBAS FAS Data Block

Vstupní data / Input Data

Parametry / Parameters	Hodnoty / Values
Operation Type	0
SBAS Provider	1 (EGNOS)
Airport Identifier	LKPR
Runway	12
Runway Letter	0 (None)
Approach Performance Designator	0
Route Indicator	
Reference Path Data Selector	0
Reference Path Identifier	E12A
LTP/FTP Latitude	500628.8400N
LTP/FTP Longitude	0141443.3200E
LTP/FTP Ellipsoidal Height (metres)	399.4
FPAP Latitude	500525.6800N
Delta FPAP Latitude (seconds)	-63.1600
FPAP Longitude	0141654.0200E
Delta FPAP Longitude (seconds)	130.7000
Threshold Crossing Height	49.2
TCH Units Selector	0 (feet)
Glidepath Angle (degrees)	3.00
Course Width (metres)	105.00
Length Offset (metres)	0
HAL (metres)	40.0
VAL (metres)	35.0

Výstupní data / Output Data

Parametry / Parameters	Hodnoty / Values
Data Block	10 12 10 0B 0C 0C 00 00 01 32 31 05 D0 07 81 15 F0 0A 1D 06 9A 23 90 12 FE 18 FD 03 EC 01 2C 01 64 00 C8 AF 1A 7B 66 3B
Calculated CRC Value	1A7B663B

Required Additional Data (not CRC wrapped)

Parametry / Parameters	Hodnoty / Values
ICAO Code	LK
LTP/FTP Orthometric Height (metres)	353.6