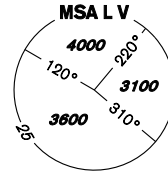


INSTRUMENT APPROACH CHART - ICAO

AERODROME ELEV 919
THR RWY 28 ELEV 915
OCH RELATED TO THR RWY 28

VODOCHODY
RADAR 127,480
TOWER 133,080
121,500



PRAHA/VODOCHODY RNAV (GNSS) RWY 28 (ACFT CAT A,B,C)

14°10'E 14°20' 14°30' 14°40' 14°50'

BEARINGS, TRACKS AND RADIALS ARE MAGNETIC
ALTITUDES AND ELEVATIONS IN FEET AND DISTANCES IN NM

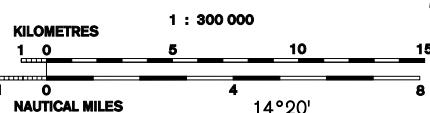
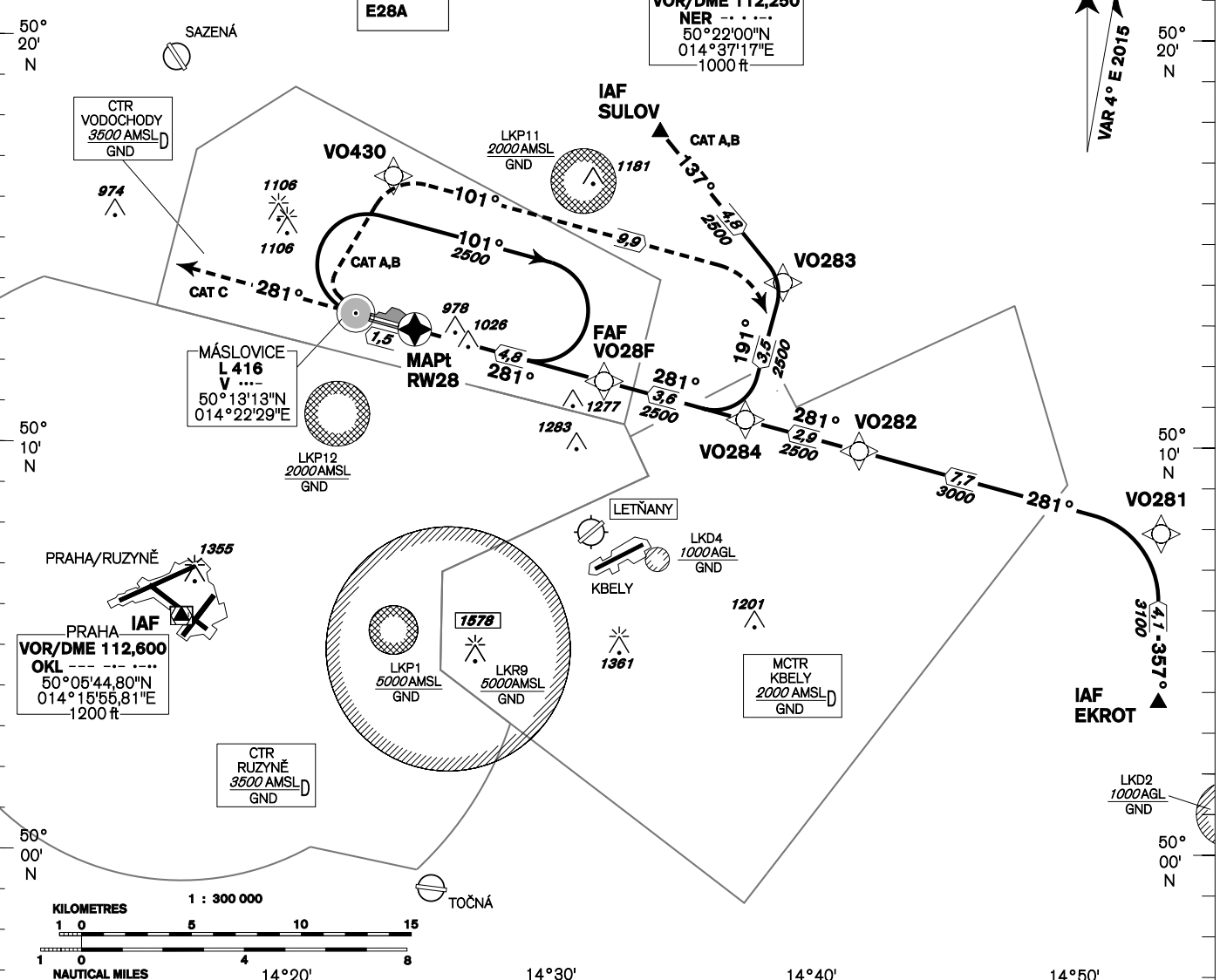
CAT C: Expect radar vectoring from IAF SULO V
CAT A,B,C: Expect radar vectoring from IAF OKL

MINIMUM TEMPERATURE FOR
BARO-VNAV OPERATIONS: -15°C

EGNOS
CH 56066
E28A

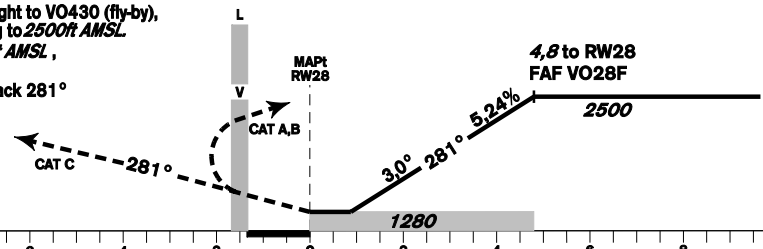
NERATOVICE
VOR/DME 112,250
NER ---
50°22'00"N
014°37'17"E
1000 ft

VAR 4° E 2015



MISSED APPROACH:
CAT A,B: Climb to L V (fly-over), turn right to VO430 (fly-by), turn right to VO283 (fly-by) in climbing to 2500ft AMSL.
CAT C: Climb on track 281° to 2500ft AMSL, radar vectoring will be provided
CAT A,B,C: In case of RCF climb on track 281° to 5,0 DME VO, turn right to L V

TRANSITION ALTITUDE
5000ft



RDH 49,2

THR 501249,66N 0142444,89E
ELEV 915

NM FM THR28

OCA/OCH	A	B	C
LNAV	1165 / 250	1165 / 250	1175 / 260
LNAV/VNAV	1330 / 410	1330 / 410	1500 / 580
LPV	1165 / 250	1165 / 250	1175 / 260
Circling (north od AD only)	1330 / 410	1330 / 410	1500 / 580

DIST THR NM	4,8	4	3	2	1
ALTITUDES ft	2500	2240	1920	1600	1280

FAF - MAPt 4,8 NM	kt					
	80	100	120	140	160	180
min:sec	3:36	2:53	2:24	2:03	1:48	1:36
Rate of descent 5,24%	ft/min					
	420	530	640	740	850	960

Timing is not authorized for defining the MAPt.

Posloupnost traťových bodů / Way point sequence

Od / From IAF SULOV		
SULOV	IAF	fly-by
VO283		fly-by
VO284	IF	fly-by
VO28F	FAF	fly-by
RW28	MAPt	fly-over
LV		fly-over
VO430		fly-by
VO283		fly-by

Od / From IAF EKROT		
EKROT	IAF	fly-by
VO281		fly-by
VO282		fly-by
VO284	IF	fly-by
VO28F	FAF	fly-by
RW28	MAPt	fly-over
LV		fly-over
VO430		fly-by
VO283		fly-by

Seznam traťových bodů / Way point list		
SULOV	50 17 44,26 N	014 34 05,85 E
EKROT	50 03 46,00 N	014 53 13,00 E
VO281	50 07 53,45 N	014 53 18,80 E
VO282	50 09 54,17 N	014 41 45,89 E
VO283	50 14 01,95 N	014 38 49,47 E
VO284	50 10 39,78 N	014 37 24,59 E
VO28F	50 11 35,23 N	014 31 59,99 E
RW28	50 12 49,66 N	014 24 44,89 E
LV	50 13 12,79 N	014 22 29,11 E
VO430	50 16 35,70 N	014 23 53,23 E

SBAS FAS Data Block

Vstupní data / Input Data

Parametry / Parameters	Hodnoty / Values
Operation Type	0
SBAS Provider	1
Airport Identifier	LKVO
Runway	28
Runway Direction	0
Approach Performance Designator	0
Route Indicator	
Reference Path Data Selector	0
Reference Path Identifier	E28A
LTP/FTP Latitude	501249.6600N
LTP/FTP Longitude	0142444.8900E
LTP/FTP Ellipsoidal Height (metres)	324.5
FPAP Latitude	501310.4300N
Delta FPAP Latitude (seconds)	20.7700
FPAP Longitude	0142243.0100E
Delta FPAP Longitude (seconds)	-121.8800
Threshold Crossing Height	49.0
TCH Units Selector	0
Glidepath Angle (degrees)	3.00
Course Width (metres)	105.00
Length Offset (metres)	0
HAL (metres)	40.0
VAL (metres)	50.0

Výstupní data / Output Data

Parametry / Parameters	Hodnoty / Values
Data Block	10 0F 16 0B 0C 1C 00 00 01 38 32 05 F8 A6 8C 15 B4 66 2F 06 AD 20 44 A2 00 D0 47 FC EA 01 2C 01 64 00 C8 FA 35 90 BA 18
Calculated CRC Value	3590BA18

Required Additional Data (not CRC wrapped)

These additional data are not required for CRC calculation, but they need to be provided to datahouses for procedure coding in ARINC 424 records.

Parametry / Parameters	Hodnoty / Values
ICAO Code	LK
LTP/FTP Orthometric Height (metres)	279.0
FPAP Orthometric Height (metres)	268.2

