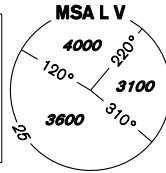


INSTRUMENT APPROACH CHART - ICAO

AERODROME ELEV **919**
THR RWY 28 ELEV **915**
OCH RELATED TO THR RWY 28

VODOCHODY
RADAR **127,480**
TOWER **133,080**
121,500



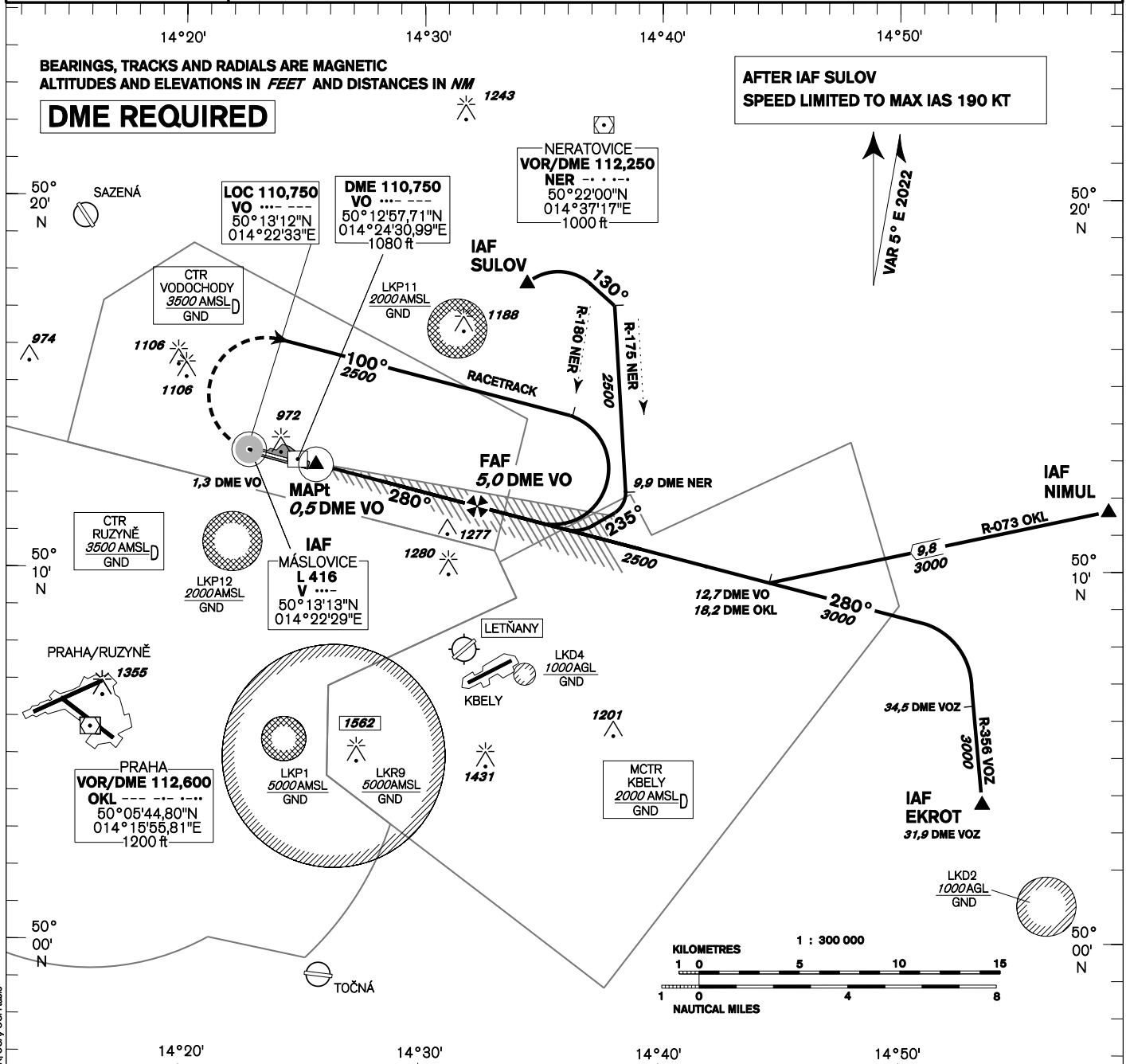
PRAHA/VODOCHODY ILS Y RWY 28 (ACFT CAT A,B)

BEARINGS, TRACKS AND RADIALS ARE MAGNETIC

ALTITUDES AND ELEVATIONS IN FEET AND DISTANCES IN NM

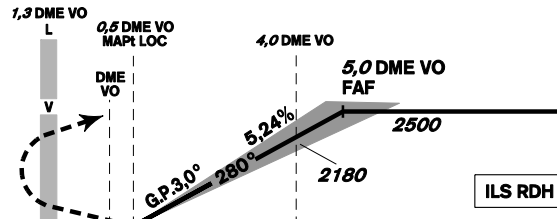
DME REQUIRED

AFTER IAF SULOV
SPEED LIMITED TO MAX IAS 190 KT



MISSED APPROACH:
Climb on track 280°, at L V turn right and continue on racetrack in climbing to 2500ft AMSL.
In case of RCF climb on track 280° to 2800ft AMSL, at 5,0 DME VO turn right to L V

TRANSITION ALTITUDE
5000ft



THR 501249,66N 0142444,88E
ELEV 915

NM FM THR28

OCA/OCH		A	B
Cat I	ft	1066/150	1078/163
LOC	ft	1280/360	
Circling (north of AD only)	ft	1330/410	1420/500

DME VO NM	5	4	3	2	1
DIST THR NM	4,8	3,8	2,8	1,8	0,8
ALTITUDES ft	2500	2180	1860	1540	1230

	kt	80	100	120	140	160	180
FAF - MAPt 4,5 NM	min:sec	3:23	2:42	2:15	1:56	1:41	1:30
Rate of descent 5,24%	ft/min	420	530	640	740	850	960

Timing is not authorized for defining the MAPt.

change: MISSED APPROACH procedures; new IAF NIMUL; MAG VAR; OCA/OCH table