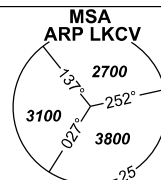


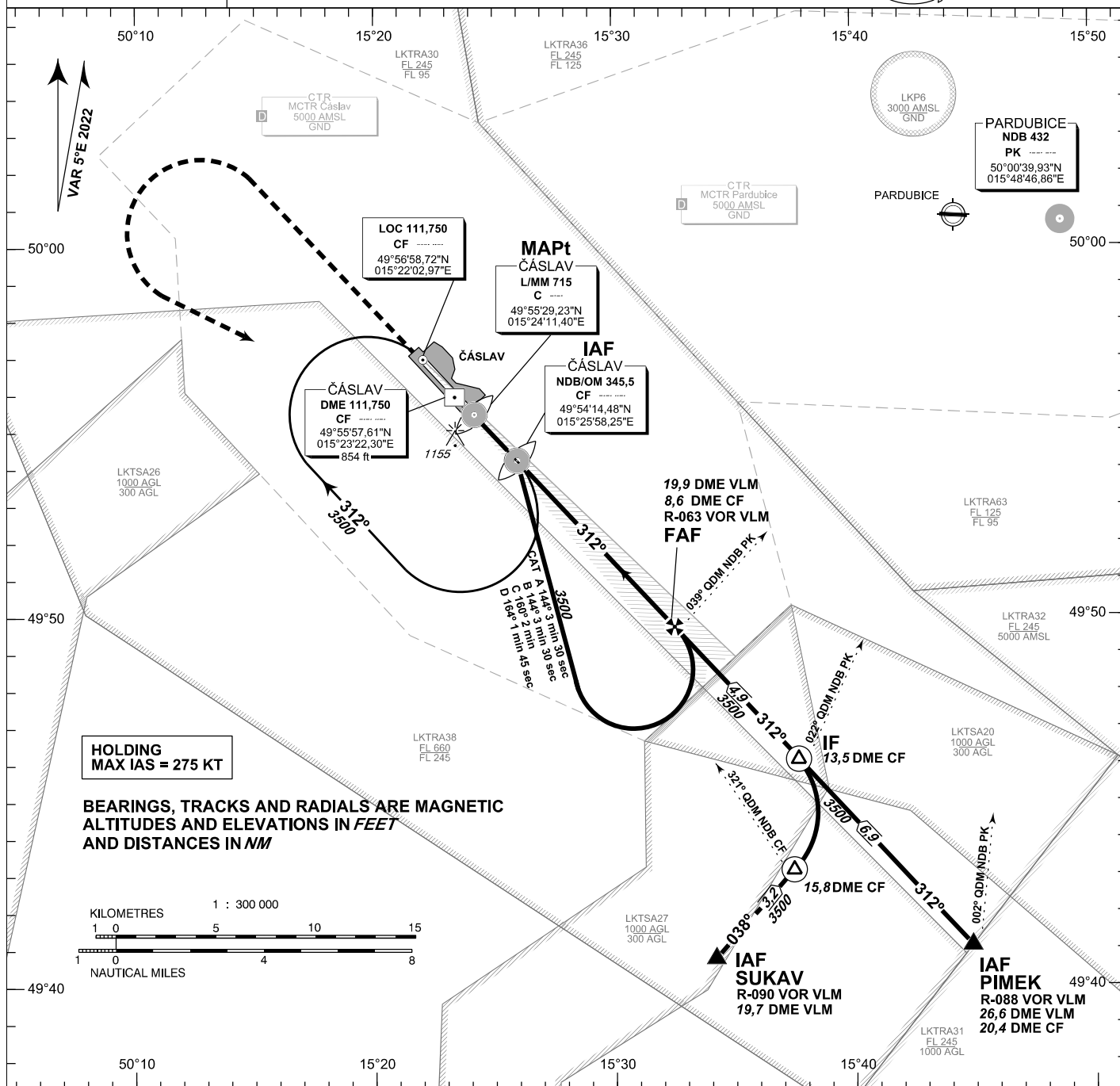
INSTRUMENT APPROACH CHART - ICAO

AERODROME ELEV **794**
THR RWY 31 ELEV **787**
THR RWY 13 ELEV **757**
ARP **775**
OCH RELATED TO THR RWY 31

ČÁSLAV RADAR 130,280 308,875 reserve
PRECISION 283,600 123,300 reserve
TOWER 134,205 129,405 reserve



ČÁSLAV
ILS/DME
RWY 31

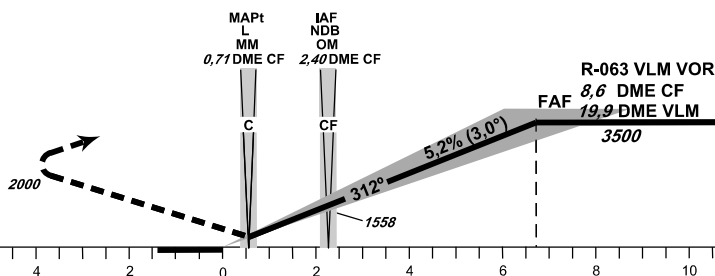


MISSED APPROACH:

Climb to **2000 ft AMSL**
turn left to NDB CF
climbing to **3500 ft AMSL**.

ILS RDH **52.3 ft**

THR 495553.90N, 0152335.81E
ELEV **787**



TRANSITION ALTITUDE
5000ft

| OCA/OCH | | A | B | C | D |
|-----------------------|-------|-------------|----------|----------|----------|
| Straight-in Approach | Cat 1 | ft 1000/213 | 1012/225 | 1020/233 | 1030/243 |
| | LOC | ft | 1129/342 | | |
| Circling (South only) | | ft 1436/649 | | 1653/866 | |

| DME CF NM | 7,0 | 5,0 | 3,0 | 2,0 | 1,0 | 0,8 |
|--------------|------|------|------|------|------|------|
| ALTITUDES ft | 3013 | 2377 | 1741 | 1423 | 1104 | 1046 |

| | kt | 80 | 100 | 120 | 140 | 160 | 180 | 230 |
|-----------------|---------|------|------|------|------|------|------|------|
| time FAF - MAPt | min:sec | 5:57 | 4:46 | 3:58 | 3:24 | 2:59 | 2:39 | 2:04 |
| Rate of descent | ft/min | 421 | 527 | 632 | 737 | 843 | 948 | 1211 |

change: coordinates of NDB PK

Timing is not authorized for defining the MAPt.

| Seznam traťových bodů / Way point list | |
|--|------------------------------|
| CF (NDB) | 49 54 14,48 N 015 25 58,25 E |
| F (C) | 49 55 29,23 N 015 24 11,40 E |
| FAF | 49 49 39 N 015 32 32 E |