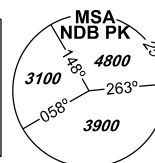


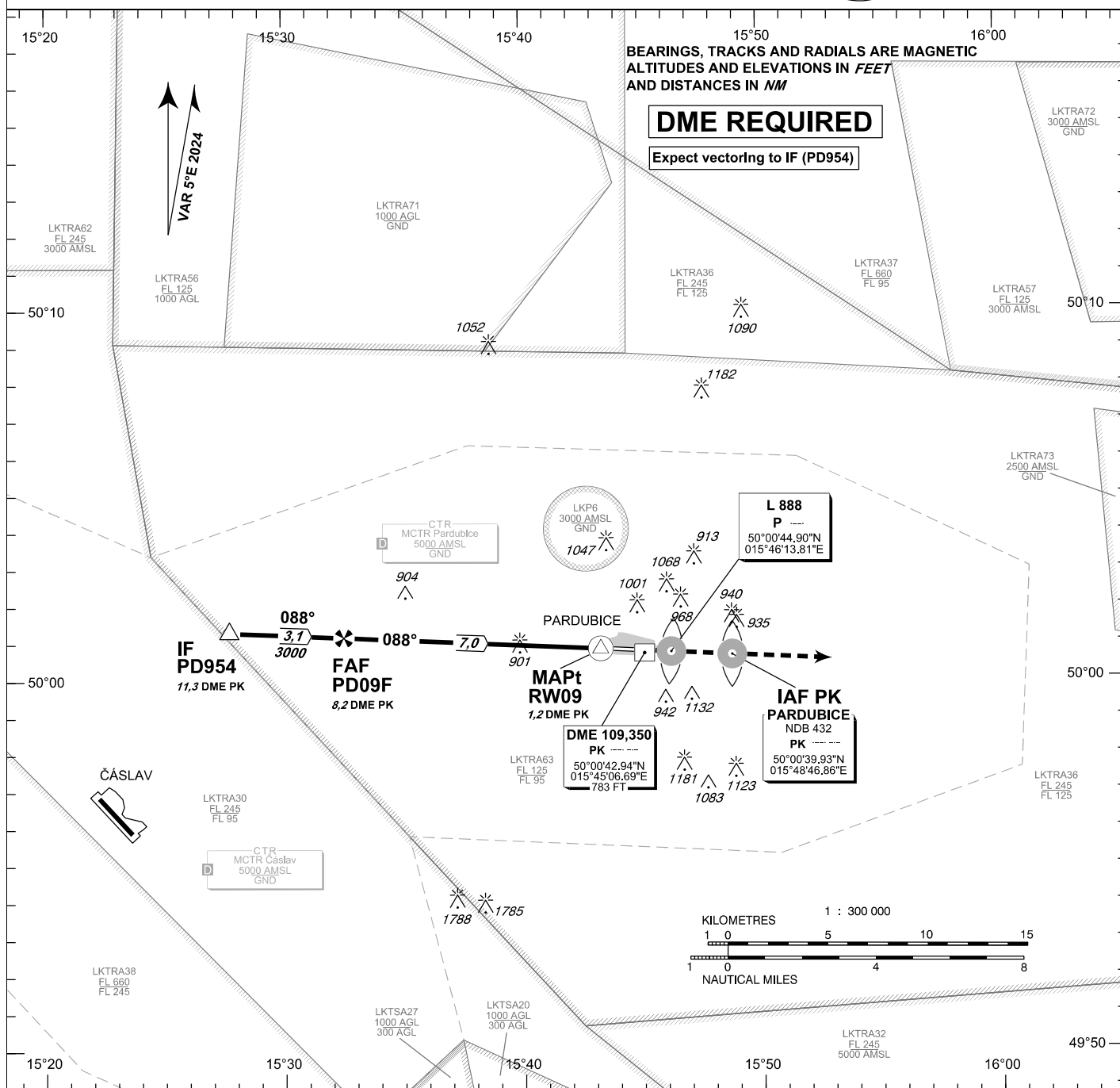
INSTRUMENT APPROACH CHART - ICAO

AERODROME ELEV 741
THR RWY 09 ELEV 736
OCH RELATED TO THR RWY 09

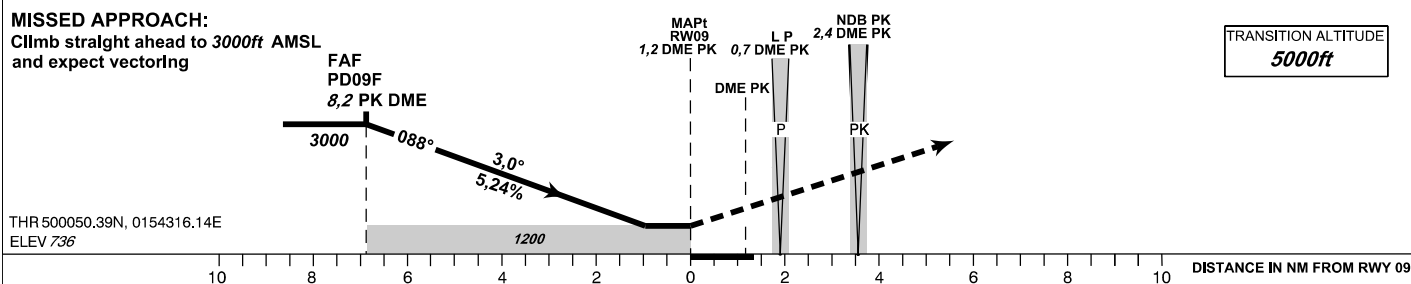
PARDUBICE			
RADAR	128,365	267,300 O/R	
PRECISION	296,825 O/R	123,300 O/R reserve	
TOWER	120,155	120,205 reserve	



**PARDUBICE
NDB
RWY 09**



MISSED APPROACH:
Climb straight ahead to 3000ft AMSL
and expect vectoring



OCA/OCH		A	B	C	D
Straight-in Approach	ft	1200/460			
Circling South of AD Only	ft	1240/510	1430/700	1580/850	1730/1010

Dist to DME PK NM	8	7	6	5	4	3	2
ALTITUDES ft	2950	2640	2320	2000	1680	1360	1040

	kt	80	100	120	140	160	180
FAF - MAPt 7.0 NM	min:sec	5:14	4:11	3:29	3:00	2:37	2:20
Rate of descent	ft/min	420	530	640	740	850	950

change: coordinates of NDB PK, L P; new obstacle 913 ft

Timing is not authorized for defining the MAPt.

Seznam traťových bodů / Way point list		
PD954	50 01 18,17 N	015 27 41,98 E
PD09F	50 01 09,83 N	015 32 30,04 E