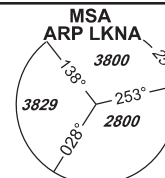


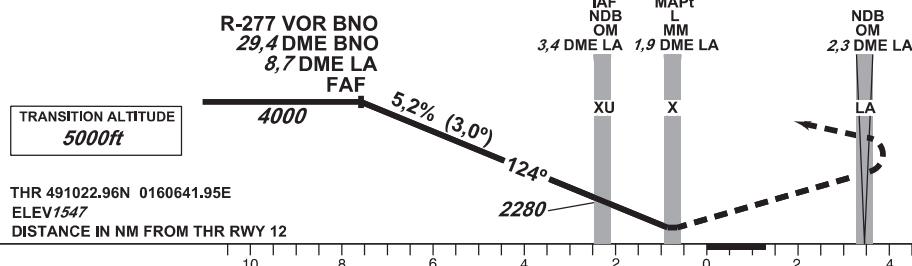
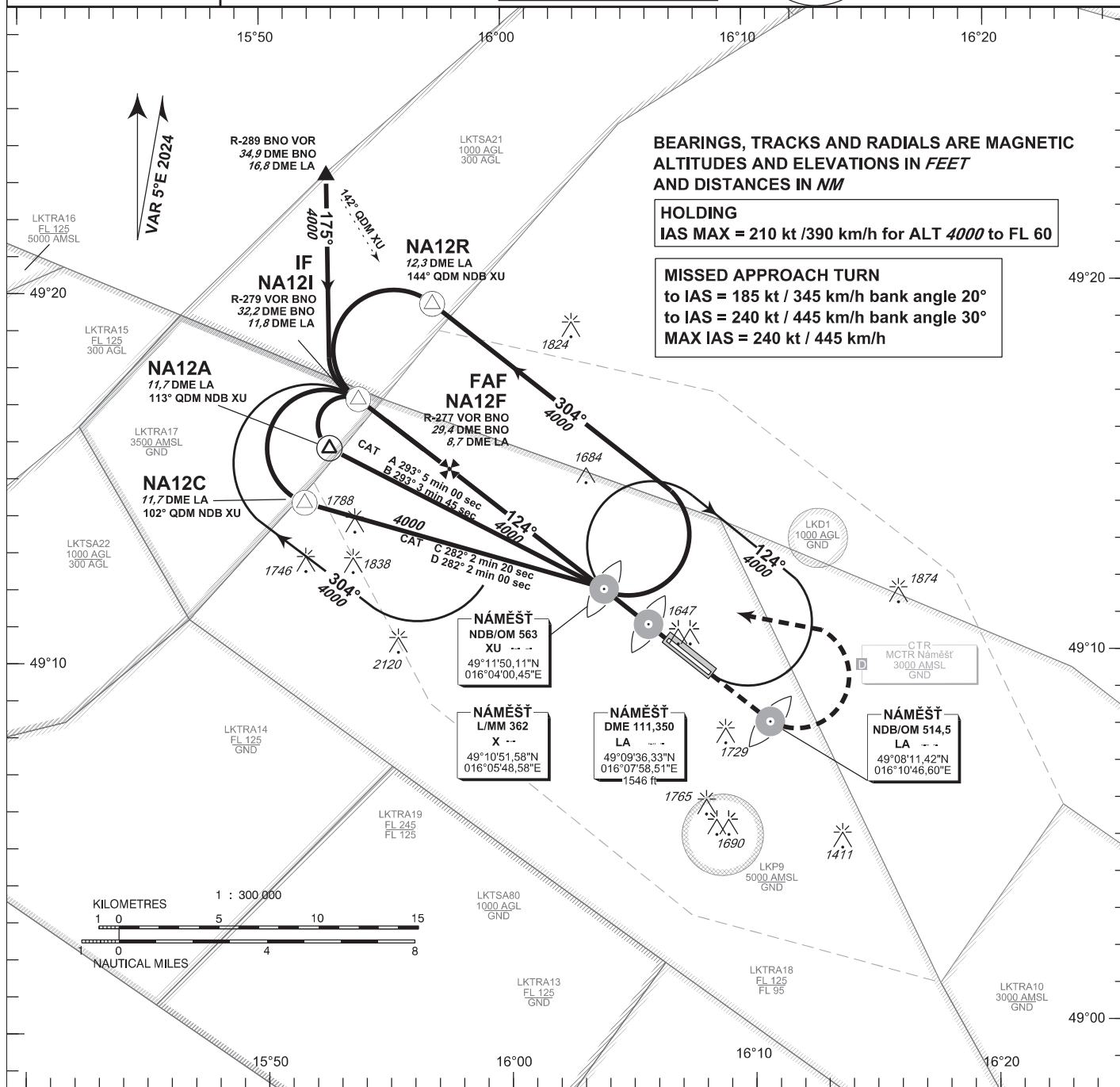
**INSTRUMENT  
APPROACH  
CHART - ICAO**

AERODROME ELEV **1547**  
THR RWY 12 ELEV **1547**  
THR RWY 30 ELEV **1496**  
OCH RELATED TO THR RWY 12

NÁMĚŠŤ RADAR 118,155  
reserve 266,200  
PRECISION 283,900  
reserve 123,300  
TOWER 126,505  
reserve 121,180



**NÁMĚŠŤ  
NDB  
RWY 12**



**MISSSED APPROACH:**  
Proceed to NDB LA  
in climbing 4000ft  
passing NDB turn left to NDB XU

In the case of RCF on final approach track  
without landing clearance  
follow the missed approach procedure

OCA/OCH		A	B	C	D
Straight-in Approach	NDB	ft	1857/308		
	PAR		1857/308		
Circling NORTH OF AD ONLY	ft	1936	1988	2086	2185

	kt	81	100	122	141	162	184
time FAF - MAPt 6,9 NM	min:sec	5:05	4:07	3:23	2:56	2:32	2:14
Rate of descent	m/s	2,2	2,7	3,3	3,8	4,4	5,0
	ft/min	433	532	650	748	866	984

change: date of VAR; coordinates of NDB XU; DME LA - ELEV and coordinates; definition of FAF and IF

Seznam traťových bodů / Way point list		
XU (NDB)	49 11 50 N	016 04 00 E
X (L)	49 10 52 N	016 05 49 E
NA12A	49 15 44 N	015 52 45 E
NA12C	49 14 16 N	015 51 42 E
NA12R	49 19 36 N	015 57 04 E
NA12I	49 17 03 N	015 53 58 E
NA12F	49 15 08 N	015 57 42 E
LA (NDB)	49 08 11 N	016 10 47 E