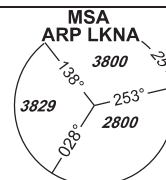


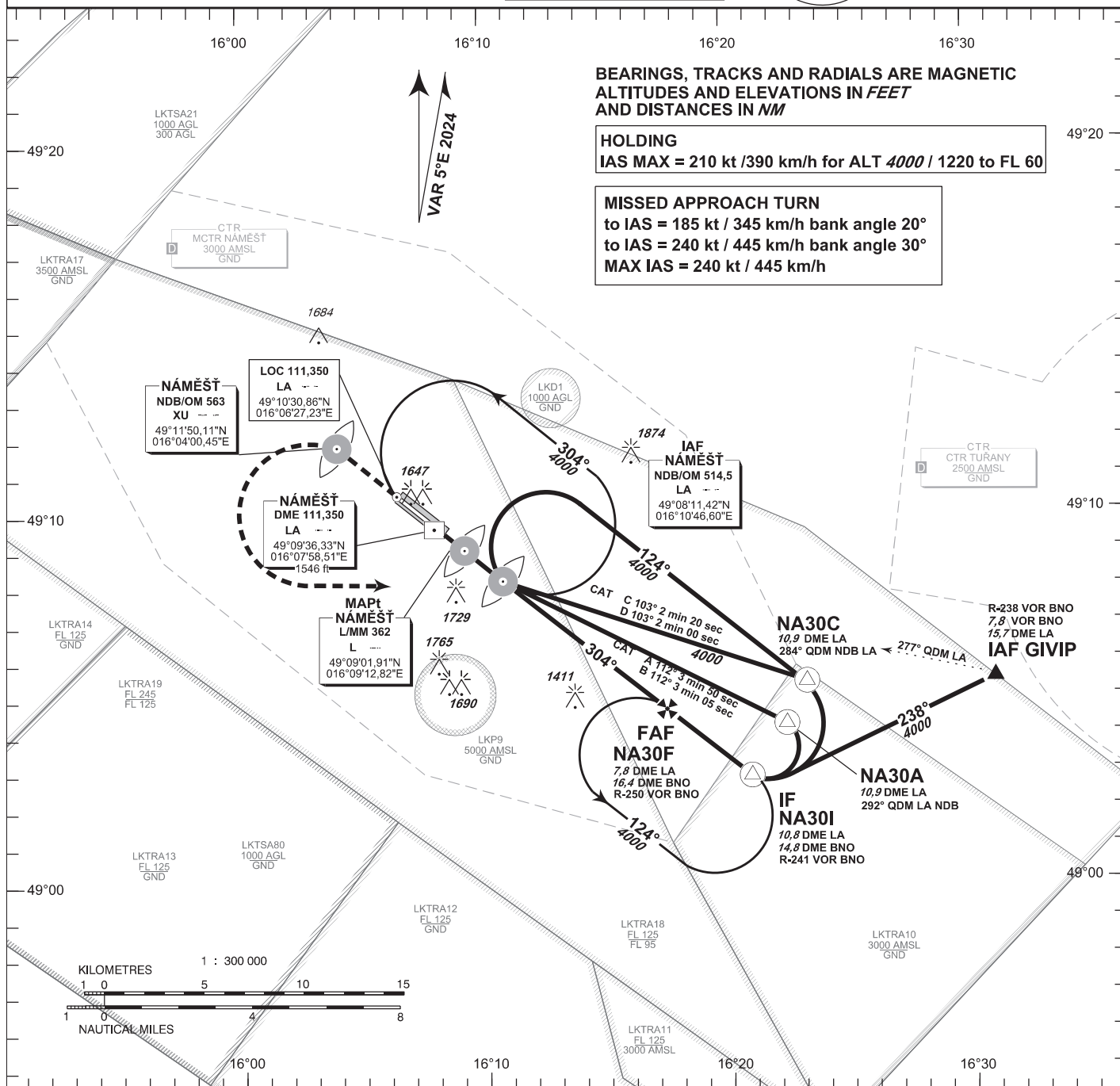
**INSTRUMENT
APPROACH
CHART - ICAO**

AERODROME ELEV 1547
THR RWY 12 ELEV 1547
THR RWY 30 ELEV 1496
OCH RELATED TO THR RWY 30

NÁMĚŠŤ RADAR 118,155
reserve 266,200
PRECISION 283,900
reserve 123,300
TOWER 126,505
reserve 121,180



**NÁMĚŠŤ
NDB
RWY 30**

**MISSED APPROACH:**

Proceed to NDB XU
in climbing 4000ft
passing NDB XU turn left to NDB LA

In the case of RCF on final approach track
without landing clearance
follow the missed approach procedure

THR 490933.73N 0160813.58E

ELEV 1496

DISTANCE IN NM FROM THR RWY 30

OCA/OCH		A	B	C	D
Straight-in Approach	NDB	ft	1873 / 377		
	PAR		1873 / 377		
Circling NORTH OF AD ONLY		ft	1936	1988	2086

kt	81	100	122	141	162	184
time FAF - MAPt 6,9 NM	5:05	4:07	3:23	2:56	2:32	2:14
Rate of descent	m / s	2,2	2,7	3,3	3,8	4,4
	ft / min	433	532	650	748	866

change: date of VAR; coordinates of LOC LA, NDB XU; DME LA - ELEV and coordinates

Timing is not authorized for defining the MAPt.

Seznam traťových bodů / Way point list

LA (NDB)	49 08 11 N	016 10 47 E
L (L)	49 09 02 N	016 09 13 E
NA30A	49 04 16 N	016 22 23 E
NA30C	49 05 24 N	016 23 14 E
NA30I	49 02 52 N	016 20 55 E
NA30F	49 04 44 N	016 17 31 E
XU (NDB)	49 11 50 N	016 04 00 E