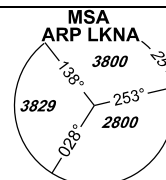


INSTRUMENT APPROACH CHART - ICAO

AERODROME ELEV **1547**
THR RWY 12 ELEV **1547**
THR RWY 30 ELEV **1496**
OCH RELATED TO THR RWY 30

NÁMĚŠŤ RADAR 118,155
reserve 266,200
PRECISION 283,900
reserve 123,300
TOWER 126,505
reserve 121,180



**NÁMĚŠŤ
NDB
RWY 30**

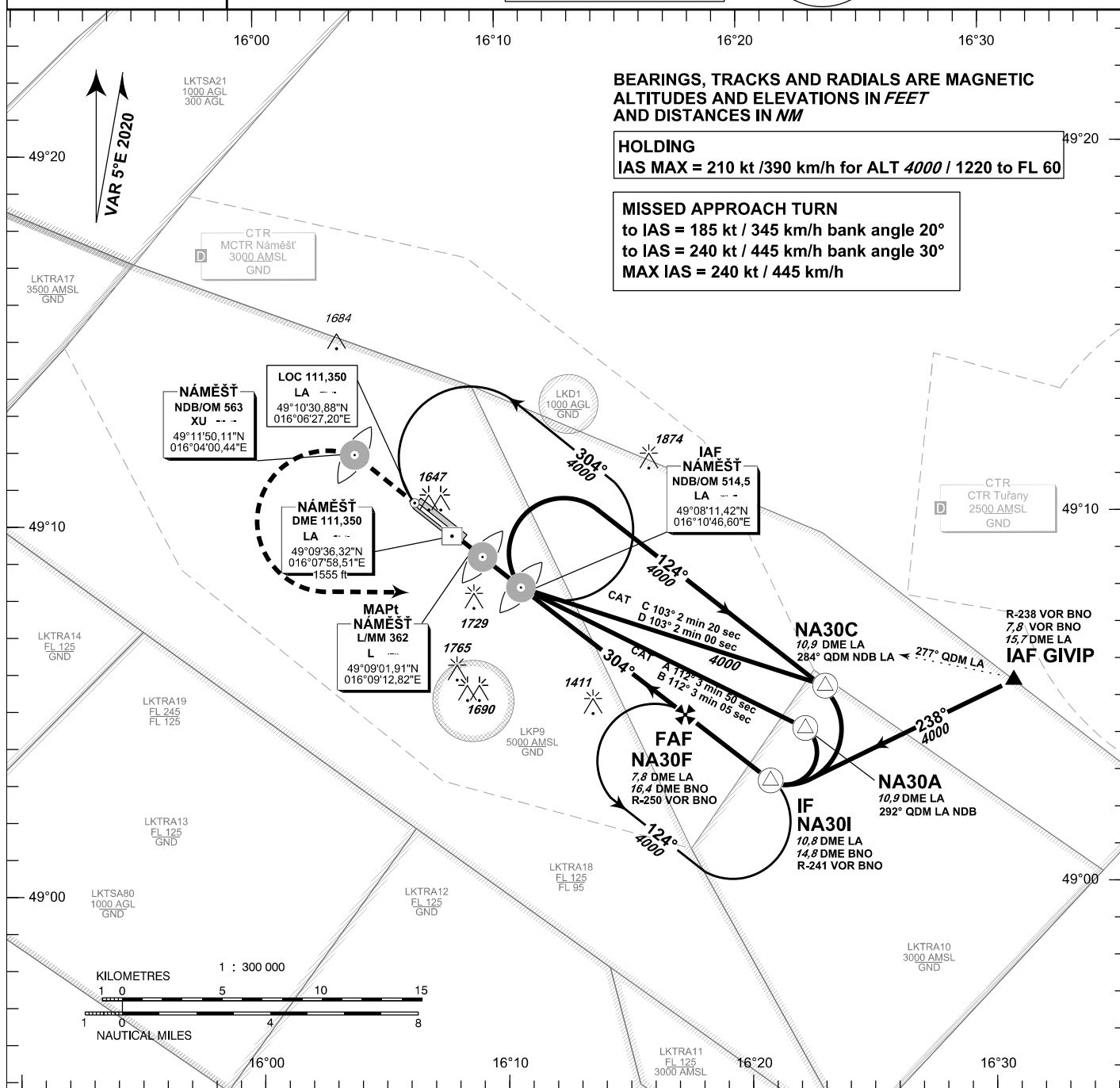
BEARINGS, TRACKS AND RADIALS ARE MAGNETIC
ALTITUDES AND ELEVATIONS IN **FEET**
AND DISTANCES IN **NM**

HOLDING

IAS MAX = 210 kt / 390 km/h for ALT 4000 / 1220 to FL 60

MISSED APPROACH TURN

to IAS = 185 kt / 345 km/h bank angle 20°
to IAS = 240 kt / 445 km/h bank angle 30°
MAX IAS = 240 kt / 445 km/h



MISSED APPROACH:

Proceed to NDB XU
in climbing **4000ft**
passing NDB XU turn left to NDB LA

In the case of RCF on final approach track
without landing clearance
follow the missed approach procedure

THR 490933.73N 0160813.58E

ELEV 1496

DISTANCE IN NM FROM THR RWY 30

OCA/OCH					NM FM THR30				
		A	B	C	D				
Straight-in Approach	NDB	ft	1873/377				kt	81	100
	PAR		1873/377				min:sec	5:05	4:07
Circling NORTH OF AD ONLY	ft	1936	1988	2086	2185		m/s	2,2	2,7
							ft/min	433	532

change: new LKTRSA80

Timing is not authorized for defining the MAPt.

Seznam traťových bodů / Way point list		
LA (NDB)	49 08 12 N	016 10 47 E
L (L)	49 09 02 N	016 09 13 E
NA30A	49 04 16 N	016 22 23 E
NA30C	49 05 24 N	016 23 14 E
NA30I	49 02 52 N	016 20 55 E
NA30F	49 04 44 N	016 17 31 E
XU (NDB)	49 11 50 N	016 04 00 E