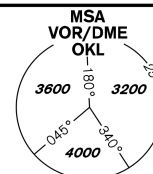


INSTRUMENT APPROACH CHART - ICAO

AERODROME ELEV **1234**
THR RWY 12 ELEV **1160**
OCH RELATED TO THR RWY 12

PRAHA RADAR 127,580
RUZYŇ RADAR 119,010
SUPPLEMENTARY FREQ. 136,080
121,500
RUZYŇ TOWER 134,560
SUPPLEMENTARY FREQ. 118,110
121,500



PRAHA/Ruzyně
RNP
RWY 12

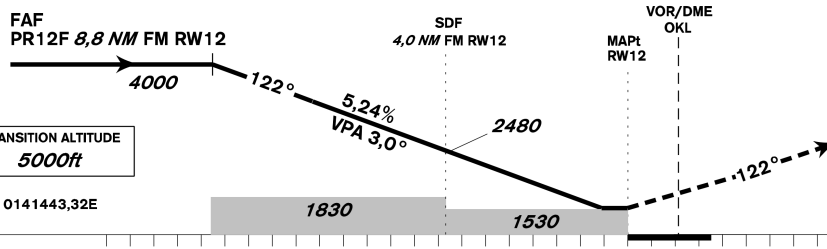
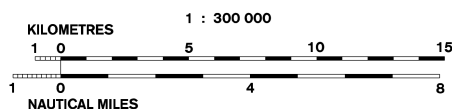
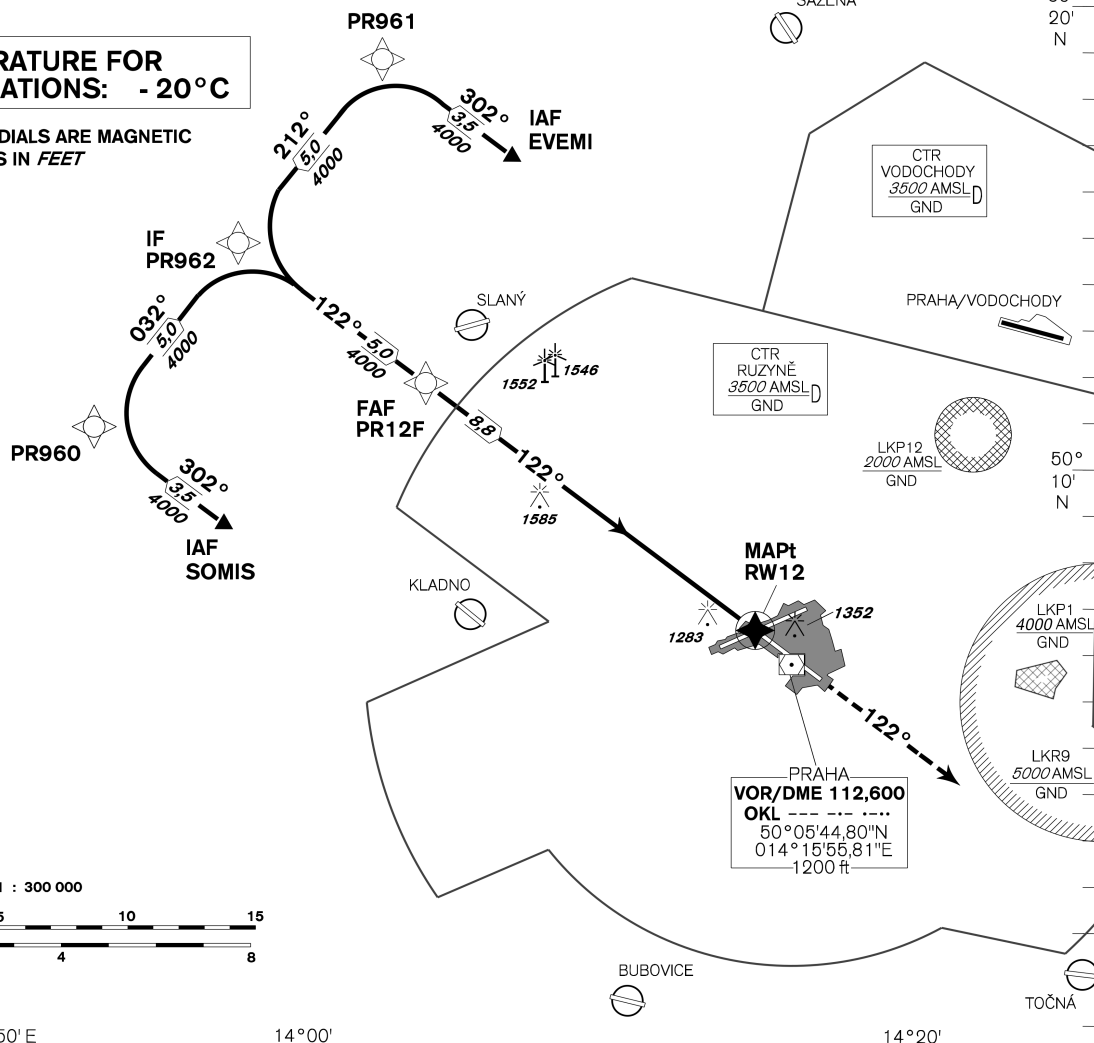
EGNOS
CH 86158
E12A

PBN
RNP APCH

**MINIMUM TEMPERATURE FOR
BARO-VNAV OPERATIONS: - 20°C**

BEARINGS, TRACKS AND RADIALS ARE MAGNETIC
ALTITUDES AND ELEVATIONS IN *FEET*
AND DISTANCES IN *NM*

ŘEVŇIČOV
DME 114,650
RVC
50°11'13"N
013°47'30"E
1700 ft



MISSED APPROACH:

Climb on track 122° to 4000ft,
radar vectoring will be provided.

In case of RCF climb on track
122° to 4000ft, at 10NM DME OKL
turn right to OKL and climb to 5000ft.

THR 500628,84N 0141443,32E
ELEV 1160

RDH 49,2 ft

OCA/OCH		A	B	C	D
LNAV	ft		1530 / 370		
LNAV / VNAV	ft		1453 / 293		
LPV	ft		1360 / 200		
Circling		see the circling approach chart			

DIST THR (MAPt) NM	8	7	6	5	4	3	2	1
ALTITUDES ft	3760	3440	3120	2800	2480	2160	1850	1530

	kt	80	100	120	140	160	180
FAF - MAPt 8.8 NM	min:sec	6:34	5:16	4:23	3:45	3:17	2:55
Rate of descent	ft/min	420	530	640	740	850	950

Timing is not authorized for defining the MAPt.

change: horizontal and vertical limits of LKP1

Posloupnost traťových bodů / Way point sequence

Od / From IAF SOMIS			Od / From IAF EVEMI			Seznam traťových bodů / Way point list	
SOMIS	IAF	fly-by	EVEMI	IAF	fly-by	SOMIS	50 08 38,56 N 013 57 15,18 E
PR960		fly-by	PR961		fly-by	EVEMI	50 16 38,86 N 014 06 33,88 E
PR962	IF	fly-by	PR962	IF	fly-by	PR960	50 10 41,95 N 013 52 57,01 E
PR12F	FAF	fly-by	PR12F	FAF	fly-by	PR961	50 18 42,62 N 014 02 15,30 E
RW12	MAPt	fly-over	RW12	MAPt	fly-over	PR962	50 14 42,39 N 013 57 35,78 E
						PR12F	50 11 44,17 N 014 03 49,30 E
						RW12	50 06 28,84 N 014 14 43,32 E

SBAS FAS Data Block

Vstupní data / Input Data

Parametry / Parameters	Hodnoty / Values
Operation Type	0
SBAS Provider	1 (EGNOS)
Airport Identifier	LKPR
Runway	12
Runway Letter	0 (None)
Approach Performance Designator	0
Route Indicator	
Reference Path Data Selector	0
Reference Path Identifier	E12A
LTP/FTP Latitude	500628.8400N
LTP/FTP Longitude	0141443.3200E
LTP/FTP Ellipsoidal Height (metres)	399.4
FPAP Latitude	500525.6800N
Delta FPAP Latitude (seconds)	-63.1600
FPAP Longitude	0141654.0200E
Delta FPAP Longitude (seconds)	130.7000
Threshold Crossing Height	49.2
TCH Units Selector	0 (feet)
Glidepath Angle (degrees)	3.00
Course Width (metres)	105.00
Length Offset (metres)	0
HAL (metres)	40.0
VAL (metres)	35.0

Výstupní data / Output Data

Parametry / Parameters	Hodnoty / Values
Data Block	10 12 10 0B 0C 0C 00 00 01 32 31 05 D0 07 81 15 F0 0A 1D 06 9A 23 90 12 FE 18 FD 03 EC 01 2C 01 64 00 C8 AF 1A 7B 66 3B
Calculated CRC Value	1A7B663B

Požadovaná dodatečná data / Required Additional Data (not CRC wrapped)

Parametry / Parameters	Hodnoty / Values
ICAO Code	LK
LTP/FTP Orthometric Height (metres)	353.6