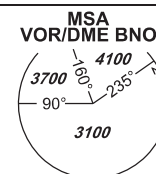
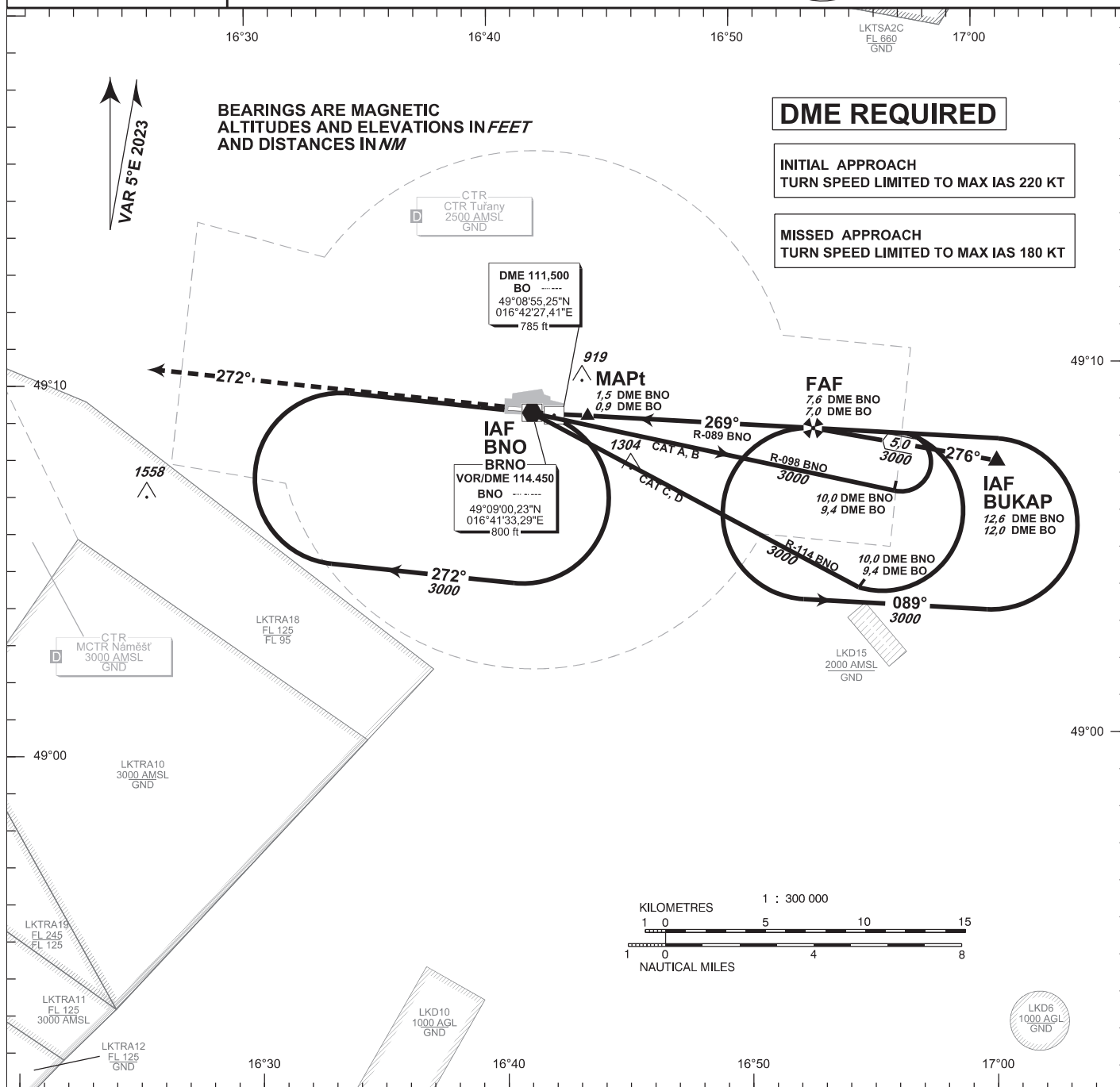


**INSTRUMENT  
APPROACH  
CHART - ICAO**AERODROME ELEV **778**  
THR RWY 27 ELEV **771**TUŘANY/TOWER 119,605  
125,430  
121,500  
  
PRAHA RADAR 127,350  
121,500**BRNO/Tuřany  
VOR  
RWY 27****MISSED APPROACH:**

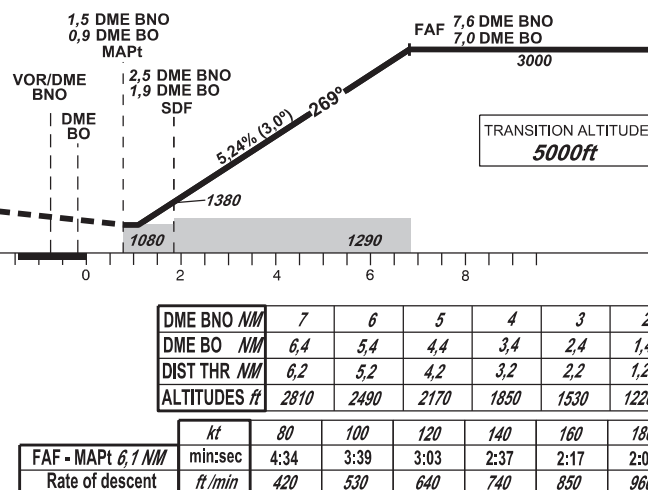
Climb on track 272° to 4000 ft AMSL,  
expect vectoring. In case of RCF climb on track 272° to  
8,0 NM DME BNO and turn right to VOR/DME BNO  
in climbing to 4000 ft AMSL.

THR 490859.12N 0164242.82E  
ELEV 771

NM FM THR27

OCA/OCH		A	B	C	D
Straight - in Approach	ft	1080/300			
Circling (South of AD Only)	ft	1210 / -	1440 / -	1560 / -	1740 / -

change: new LKD15



DME BNO NM	7	6	5	4	3	2
DME BO NM	6,4	5,4	4,4	3,4	2,4	1,4
DIST THR NM	6,2	5,2	4,2	3,2	2,2	1,2
ALTITUDES ft	2810	2490	2170	1850	1530	1220

	kt	80	100	120	140	160	180
FAF - MAPt 6,1 NM	min:sec	4:34	3:39	3:03	2:37	2:17	2:02
Rate of descent	ft/min	420	530	640	740	850	960

Timing is not authorized for defining the MAPt.