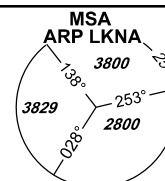


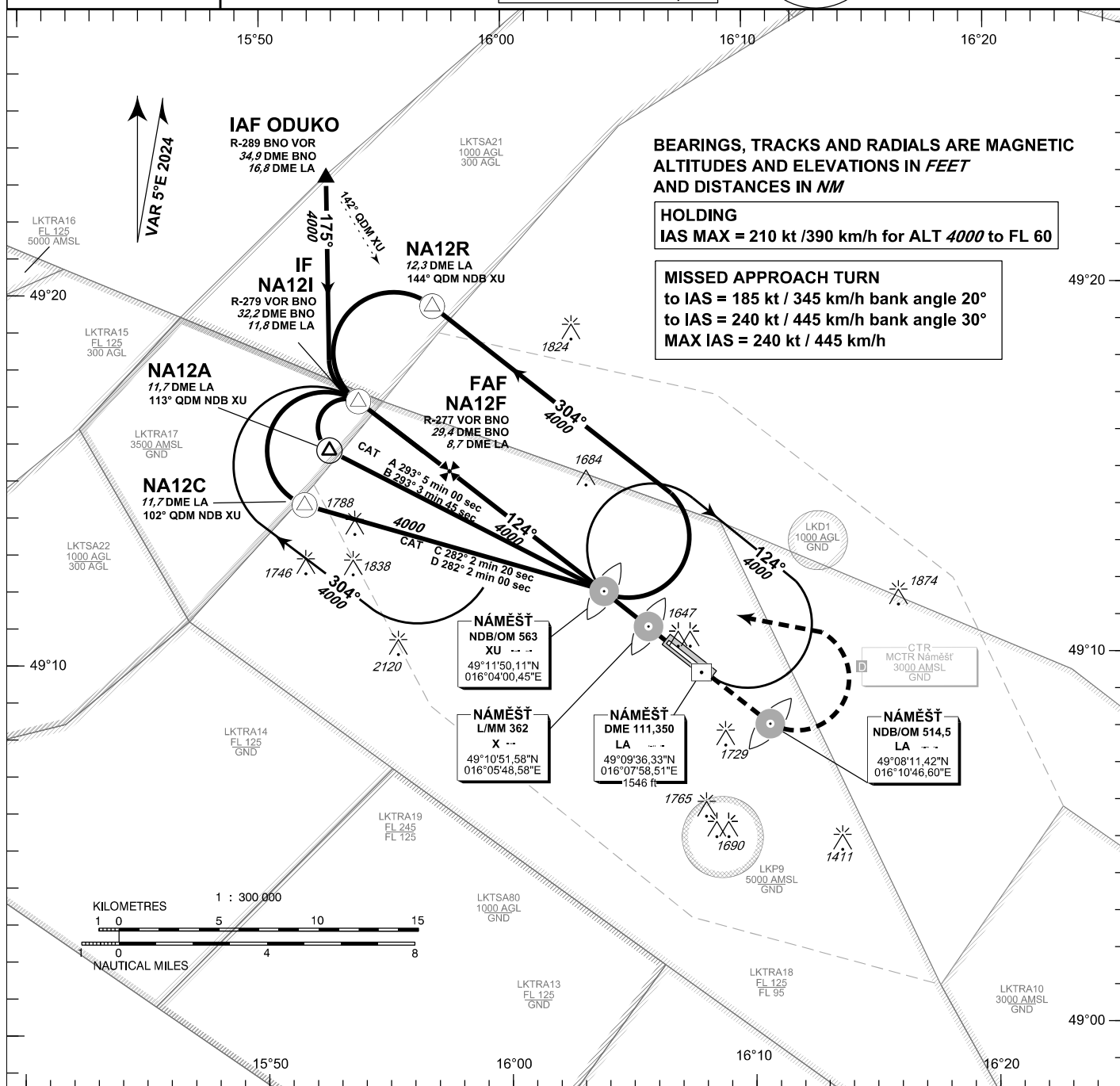
**INSTRUMENT
APPROACH
CHART - ICAO**

AERODROME ELEV **1547**
THR RWY 12 ELEV **1547**
THR RWY 30 ELEV **1496**
OCH RELATED TO THR RWY 12

NÁMĚŠŤ RADAR 118,155
reserve 266,200
PRECISION 283,900
reserve 123,300
TOWER 126,505
reserve 121,180



**NÁMĚŠŤ
NDB
RWY 12**



R-277 VOR BNO
29,4 DME BNO
8,7 DME LA
FAF

IAF NDB OM
3,4 DME LA
MAPt L MM
1,9 DME LA

NDB OM
2,3 DME LA

MISSSED APPROACH:

Proceed to NDB LA
in climbing **4000ft**
passing NDB turn left to NDB XU

In the case of RCF on final approach track
without landing clearance
follow the missed approach procedure

TRANSITION ALTITUDE
5000ft

THR 491022.96N 0160641.95E
ELEV 1547
DISTANCE IN NM FROM THR RWY 12

OCA/OCH		A	B	C	D
Straight-in Approach	NDB	ft	1857/308		
	PAR		1857/308		
Circling NORTH OF AD ONLY	ft	1936	1988	2086	2185

	kt	81	100	122	141	162	184
time FAF - MAPt 6,9 NM	min:sec	5:05	4:07	3:23	2:56	2:32	2:14
Rate of descent	m/s	2,2	2,7	3,3	3,8	4,4	5,0
	ft/min	433	532	650	748	866	984

change: corrections - addition of DME LA symbol and IAF ODUKO label
previous change: date of VAR; coordinates of NDB XU; DME LA - ELEV and coordinates; definition of FAF and IF

Seznam traťových bodů / Way point list		
XU (NDB)	49 11 50 N	016 04 00 E
X (L)	49 10 52 N	016 05 49 E
NA12A	49 15 44 N	015 52 45 E
NA12C	49 14 16 N	015 51 42 E
NA12R	49 19 36 N	015 57 04 E
NA12I	49 17 03 N	015 53 58 E
NA12F	49 15 08 N	015 57 42 E
LA (NDB)	49 08 11 N	016 10 47 E