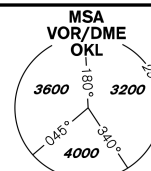


# INSTRUMENT APPROACH CHART - ICAO

AERODROME ELEV **1234**  
THR RWY 12 ELEV **1160**  
OCH RELATED TO THR RWY 12

PRAHA RADAR 127,580  
RUZYNĚ RADAR 119,010  
SUPPLEMENTARY FREQ. 136,080  
121,500  
RUZYNĚ TOWER 134,560  
SUPPLEMENTARY FREQ. 118,110  
121,500

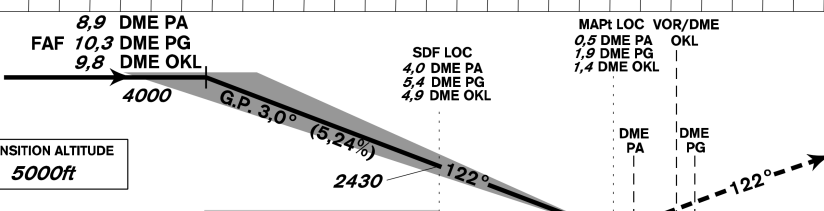
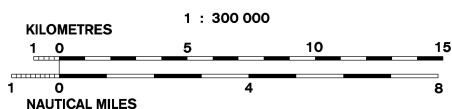
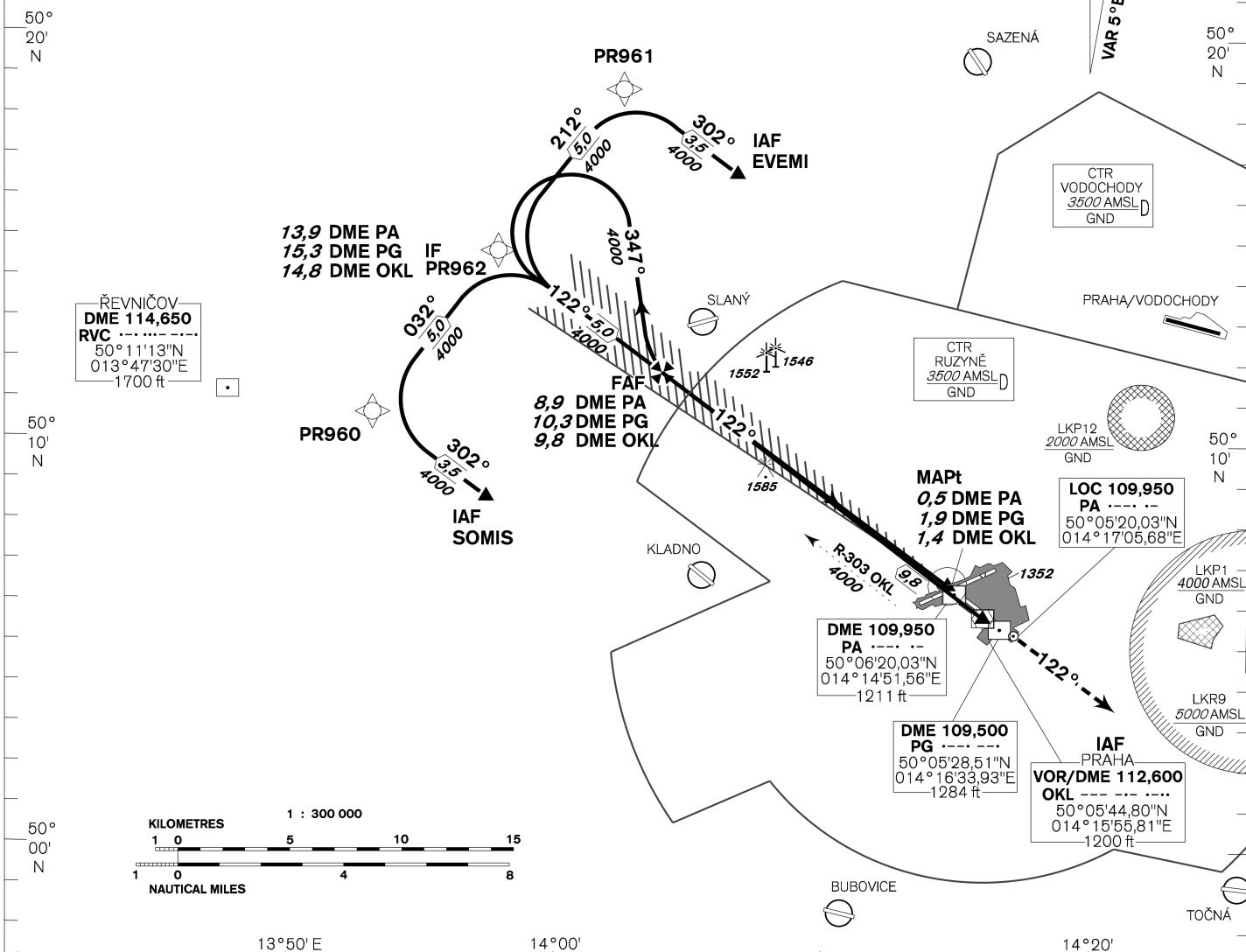


**PRAHA/Ruzyně**  
**ILS**  
**RWY 12**

AIRCRAFT NOT EQUIPPED FOR RNAV-1  
SHOULD EXPECT RADAR VECTORING AFTER IAF EVEMI AND SOMIS

BEARINGS, TRACKS AND RADIALS ARE MAGNETIC  
ALTITUDES AND ELEVATIONS IN **FEET**  
AND DISTANCES IN **NM**

**DME REQUIRED**



## MISSED APPROACH:

Climb on track 122° to 4000ft, radar vectoring will be provided.

In case of RCF climb on track 122° to 4000ft, at 10NM DME OKL turn right to OKL and climb to 5000ft.

THR 500628,84N 0141443,32E  
ELEV 1160

TRANSITION ALTITUDE  
**5000ft**

1840

1500

ILS RDH 54,1

OCA/OCH		A	B	C	D
Straight-in Approach	Cat I	ft 1313 / 153	1327 / 167	1343 / 183	1359 / 199
	LOC	ft 1500 / 340			
Circling		see the circling approach chart			

Operating minima RVR 750 m

NM FM THR12									
DME PA	NM	8	7	6	5	4	3	2	1
DME PG	NM	9,4	8,4	7,4	6,4	5,4	4,4	3,4	2,4
DME OKL	NM	8,9	7,9	6,9	5,9	4,9	3,9	2,9	1,9
THR DIST	NM	7,8	6,8	5,8	4,8	3,8	2,8	1,8	0,8
ALTITUDES	ft	3700	3390	3070	2750	2430	2110	1790	1480
	kt	80	100	120	140	160	180		
FAF - MAPt	8,4 NM	min:sec	6:19	5:03	4:13	3:36	3:10	2:49	
Rate of descent	ft/min	420	530	640	740	850	960		

Timing is not authorized for defining the MAPt.

change: horizontal and vertical limits of LKP1