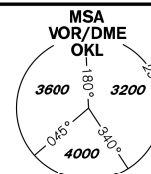


INSTRUMENT APPROACH CHART - ICAO

AERODROME ELEV **1234**
THR RWY 30 ELEV **1232**
OCH RELATED TO THR RWY 30

PRAHA RADAR 127,580
RUZYŇ RADAR 119,010
SUPPLEMENTARY FREQ
136,080
121,500
134,560
RUZYŇ TOWER
SUPPLEMENTARY FREQ
118,110
121,500



PRAHA/Ruzyně
ILS
RWY 30

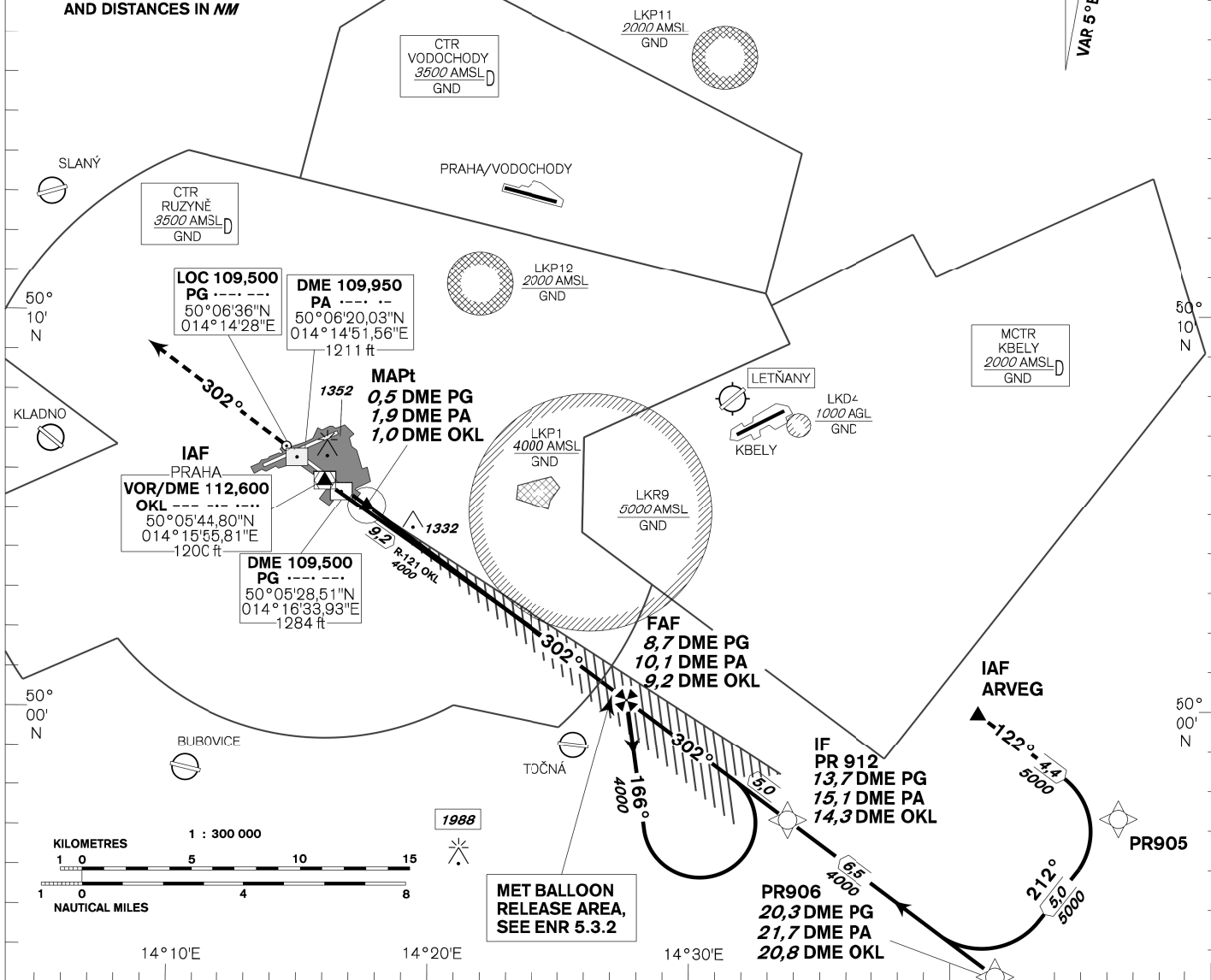
AIRCRAFT NOT EQUIPPED FOR RNAV-1
SHOULD EXPECT RADAR VECTERING AFTER IAF ARVEG

NERATOVICE
VOR/DME 112,250
NER ---
50°22'00"N
014°37'17"E
1000 ft

DME REQUIRED

VAR 5° E 2022

BEARINGS, TRACKS AND RADIALS ARE MAGNETIC
ALTITUDES AND ELEVATIONS IN **FEET**
AND DISTANCES IN **NM**



MISSED APPROACH:

Climb on track 302° to **4000ft**,
radar vectering will be provided.

In case of RCF climb on track
302° to **4000ft**, at **10NM** DME OKL
turn right to OKL and climb to **5000ft**.

THR 500525.68N, 0141654.02E
ELEV 1232

OCA/OCH		A	B	C	D
Straight - in Approach	Cat I	ft 1372 / 140	1380 / 148	1390 / 158	1401 / 169
	LOC	ft 1610 / 370			
Circling		see the circling approach chart			

DME PG	NM	9	8	7	6	5	4	3	2	1
DME PA	NM	10,4	9,4	8,4	7,4	6,4	5,4	4,4	3,4	2,4
DME OKL	NM	9,5	8,5	7,5	6,5	5,5	4,5	3,5	2,5	1,5
DIST THR	NM	8,8	7,8	6,8	5,8	4,8	3,8	2,8	1,8	0,8
ALTITUDES	ft	4090	3780	3460	3140	2820	2500	2180	1860	1540

FAF - MAPt 8,2 NM	min:sec	6:11	4:57	4:07	3:32	3:05	2:45
Rate of descent	ft/min	420	530	640	740	850	960

change: horizontal and vertical limits of LKP1