

INSTRUMENT APPROACH CHART - ICAO

AERODROME ELEV **1234**
THR RWY 12 ELEV **1160**
OCH RELATED TO THR RWY 12

PRAHA RADAR 127,580
RUZYŇ RADAR 119,010
SUPPLEMENTARY FREQ 136,080
121,500
RUZYŇ TOWER 134,560
SUPPLEMENTARY FREQ 118,110
121,500



PRAHA/Ruzyně
VOR
RWY 12

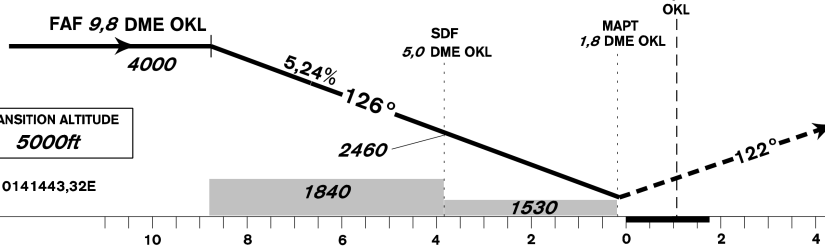
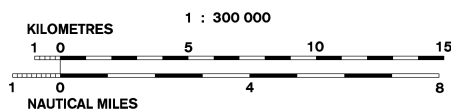
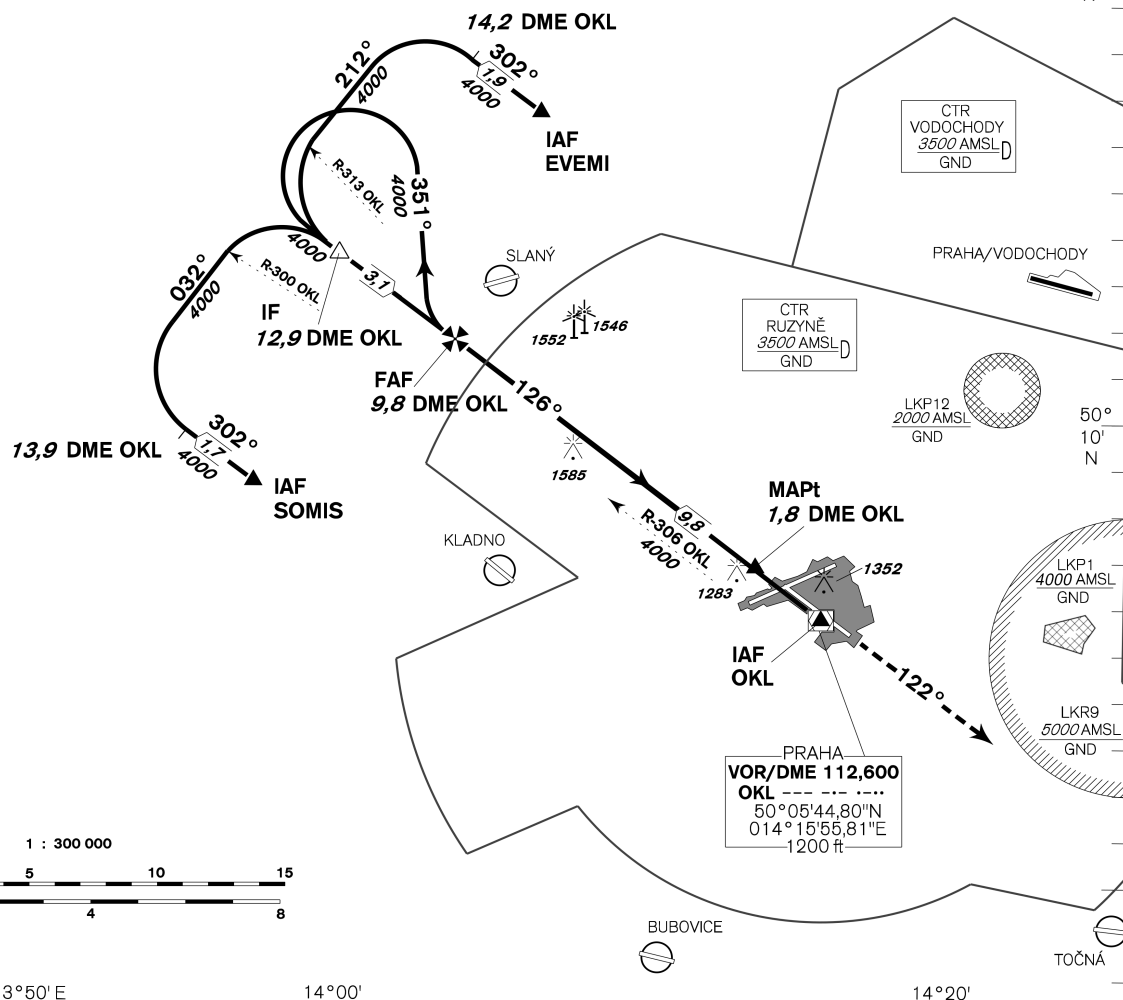
BEARINGS, TRACKS AND RADIALS ARE MAGNETIC
ALTITUDES AND ELEVATIONS IN **FEET**
AND DISTANCES IN **NM**

AFTER IAF EVEMI TURN SPEED
LIMITED TO MAX IAS 210 KT

DME REQUIRED

VAR 5° E 2022

ŘEVNIČOV
DME 114,650
RVC
50°11'13"N
013°47'30"E
1700 ft



MISSED APPROACH:

Climb on track 122° to 4000ft,
radar vectoring will be provided.

In case of RCF climb on track
122° to 4000ft, at 10NM DME OKL
turn right to OKL and climb to 5000ft.

THR 500628,84N 0141443,32E
ELEV 1160

OCA/OCH	A		B	C	D
Straight - in Approach	ft	1530 / 370			
Circling	see the circling approach chart				

DME OKL NM	10	9	8	7	6	5	4	3
THR DIST NM	8,9	7,9	6,9	5,9	4,9	3,9	2,9	1,9
ALTITUDES ft	4050	3730	3420	3100	2780	2460	2140	1820

kt	80	100	120	140	160	180
FAF - MAPt 8,0 NM min:sec	6:00	4:48	4:00	3:26	3:00	2:40
Rate of descent ft/min	420	530	640	740	850	950

Timing is not authorized for defining the MAPt.

change: horizontal and vertical limits of LKP1