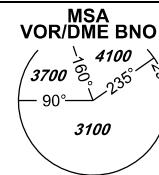


# INSTRUMENT APPROACH CHART - ICAO

AERODROME ELEV **778**  
THR RWY 27 ELEV **771**

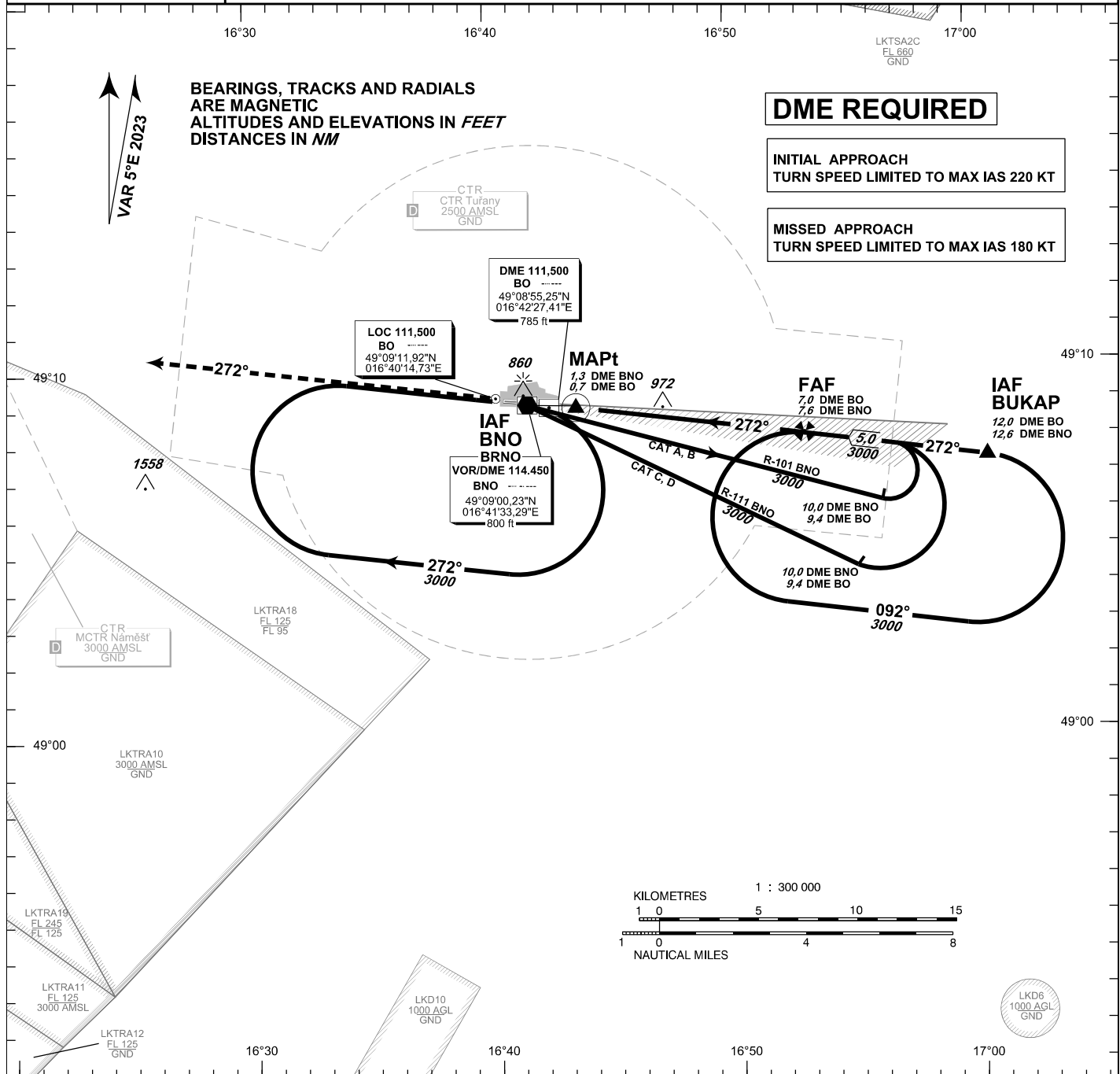
TUŘANY/TOWER **119,605**  
**125,430**  
**121,500**

PRAHA RADAR **127,350**  
**121,500**



**BRNO/Tuřany**  
**ILS**

**RWY 27**

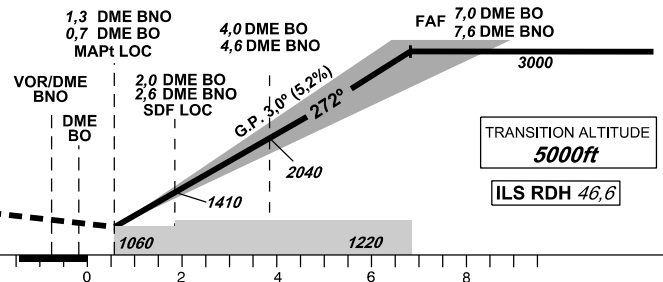


## MISSED APPROACH:

Climb on track 272° to **4000 ft AMSL**, expect vectoring. In case of RCF climb on track 272° to **8,0 NM DME BNO** and turn right to VOR/DME BNO in climbing to **4000 ft AMSL**.

THR 490859.12N 0164242.82E  
ELEV 771

NM FM THR27



OCA/OCH			A	B	C	D
Straight - in	Cat I	ft	927/156	939/169	947/176	958/188
Approach	LOC	ft	1060/290			
Circling (South of AD Only)		ft	1210 / -	1440 / -	1560 / -	1740 / -

DME BO NM	7	6	5	4	3	2	1
DME BNO NM	7,6	6,6	5,6	4,6	3,6	2,6	1,6
DIST THR NM	6,8	5,8	4,8	3,8	2,8	1,8	0,8
ALTITUDES ft	3000	2680	2360	2040	1720	1410	1090

	kt	80	100	120	140	160	180
FAF - MAPt 6,3 NM	min:sec	4:42	3:46	3:08	2:41	2:21	2:06
Rate of descent	ft/min	420	530	640	740	850	960

change: L/MKR BOREK withdrawn; MAPt definition

Timing is not authorized for defining the MAPt.