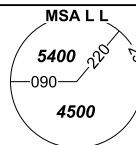
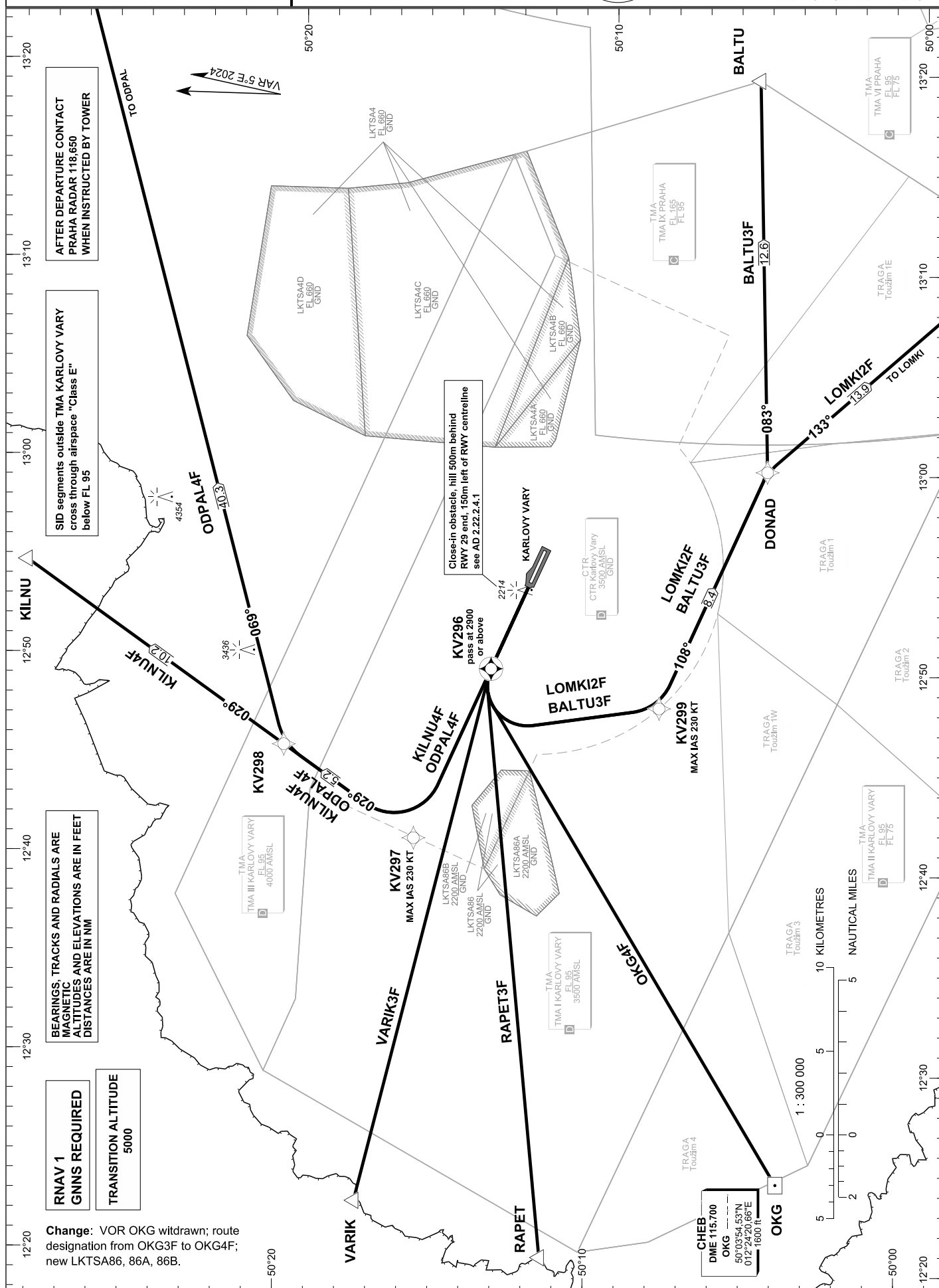


PRAHA RADAR	118.650
VARY TOWER	121.230
KARLOVY VARY ATIS	127.640
EMERGENCY FREQ	121.500



BALTU3F LOMKI2F OKG4F RAPET3F  
VARIK3F ODPAL4F KILNU4F



The design of SIDs assumes climb gradient 3,3%, MAX IAS 250 kt below FL100. If a greater climb gradient or a speed reduction are required, it is indicated in the description of the route. Recommended coding:

Designator		Route			After Departure					Remarks
					Initial climb to		Expect FREQ			
Path Terminator	Waypoint			Cours / Track MAG° (True°)	DIST NM	Turn Direction	Constraints		Nav Spec.	Remarks
	ID	Flyover	Coordinates				Level	Speed		
BALTU3F (BALTU THREE FOX-TROT DEPARTURE)		Climb direct to KV296 - KV299 - DONAD - BALTU			According to ATC clearance		PRAHA RADAR 118,650 MHz (when instructed)		Average climb gradi- ent to reach KV296 at 2900 ft MSL is 5 %, thereafter 3,3 %.	
DF	KV296	YES	501334.82N 0124947.45E	---	---	---	A2900+	---	RNAV 1	---
DF	KV299	NO	500808.00N 0124801.50E	---	---	LEFT	---	K230-	RNAV 1	---
TF	DONAD	NO	500450.93N 0130000.00E	108 (113.02)	8.4	LEFT	---	---	RNAV 1	---
TF	BALTU	NO	500522.06N 0131935.48E	083 (087.52)	12.6	LEFT	---	---	RNAV 1	---
LOMKI2F (LOMKI TWO FOX-TROT DEPARTURE)		Climb direct to KV296 - KV299 - DONAD - LOMKI			According to ATC clearance		PRAHA RADAR 118,650 MHz (when instructed)		Average climb gradi- ent to reach KV296 at 2900 ft MSL is 5 %, thereafter 3,3 %.	
DF	KV296	YES	501334.82N 0124947.45E	---	---	---	A2900+	---	RNAV 1	---
DF	KV299	NO	500808.00N 0124801.50E	---	---	LEFT	---	K230-	RNAV 1	---
TF	DONAD	NO	500450.93N 0130000.00E	108 (113.02)	8.4	LEFT	---	---	RNAV 1	---
TF	LOMKI	NO	495433.61N 0131428.40E	133 (137.70)	13.9	RIGHT	---	---	RNAV 1	---
OKG4F (OKG FOUR FOX-TROT DEPARTURE)		Climb direct to KV296 - OKG			According to ATC clearance		PRAHA RADAR 118,650 MHz (when instructed)		Average climb gradi- ent to reach KV296 at 2900 ft MSL is 5 %, thereafter 3,3 %.	
DF	KV296	YES	501334.82N 0124947.45E	---	---	---	A2900+	---	RNAV 1	---
DF	OKG	NO	500354.53N 0122420.66E	---	---	LEFT	---	---	RNAV 1	---
RAPET3F (RAPET THREE FOX-TROT DEPARTURE)		Climb direct to KV296 - RAPET			According to ATC clearance		PRAHA RADAR 118,650 MHz (when instructed)		Average climb gradi- ent to reach KV296 at 2900 ft MSL is 5 %, thereafter 3,3 %.	
DF	KV296	YES	501334.82N 0124947.45E	---	---	---	A2900+	---	RNAV 1	---
DF	RAPET	NO	501125.7600N 0122019.1000E	---	---	LEFT	---	---	RNAV 1	---
VARIK3F (VARIK THREE FOX-TROT DEPARTURE)		Climb direct to KV296 - VARIK			According to ATC clearance		PRAHA RADAR 118,650 MHz (when instructed)		Average climb gradi- ent to reach KV296 at 2900 ft MSL is 5 %, thereafter 3,3 %.	
DF	KV296	YES	501334.82N 0124947.45E	---	---	---	A2900+	---	RNAV 1	---
DF	VARIK	NO	501728.0000N 0122252.0000E	---	---	LEFT	---	---	RNAV 1	---
ODPAL4F (ODPAL FOUR FOX-TROT DEPARTURE)		Climb direct to KV296 - KV297 - KV298 - ODPAL			According to ATC clearance		PRAHA RADAR 118,650 MHz (when instructed)		Average climb gradi- ent to reach KV296 at 2900 ft MSL is 5 %, thereafter 3,3 %.	
DF	KV296	YES	501334.82N 0124947.45E	---	---	---	A2900+	---	RNAV 1	---
DF	KV297	NO	501555.15N 0124111.24E	---	---	---	---	K230-	RNAV 1	---
TF	KV298	NO	502011.15N 0124542.80E	029 (034.16)	5.2	RIGHT	---	---	RNAV 1	---
TF	ODPAL	NO	503101.67N 0134627.80E	069 (074.00)	40.3	RIGHT	---	---	RNAV 1	---
KILNU4F (KILNU FOUR FOX-TROT DEPARTURE)		Climb direct to KV296 - KV297 - KV298 - KILNU			According to ATC clearance		PRAHA RADAR 118,650 MHz (when instructed)		Average climb gradi- ent to reach KV296 at 2900 ft MSL is 5 %, thereafter 3,3 %.	
DF	KV296	YES	501334.82N 0124947.45E	---	---	---	A2900+	---	RNAV 1	---
DF	KV297	NO	501555.15N 0124111.24E	---	---	---	---	K230-	RNAV 1	---
TF	KV298	NO	502011.15N 0124542.80E	029 (034.16)	5.2	RIGHT	---	---	RNAV 1	---
TF	KILNU	NO	502836.6800N 0125441.9700E	029 (034.16)	10.2	---	---	---	RNAV 1	---