

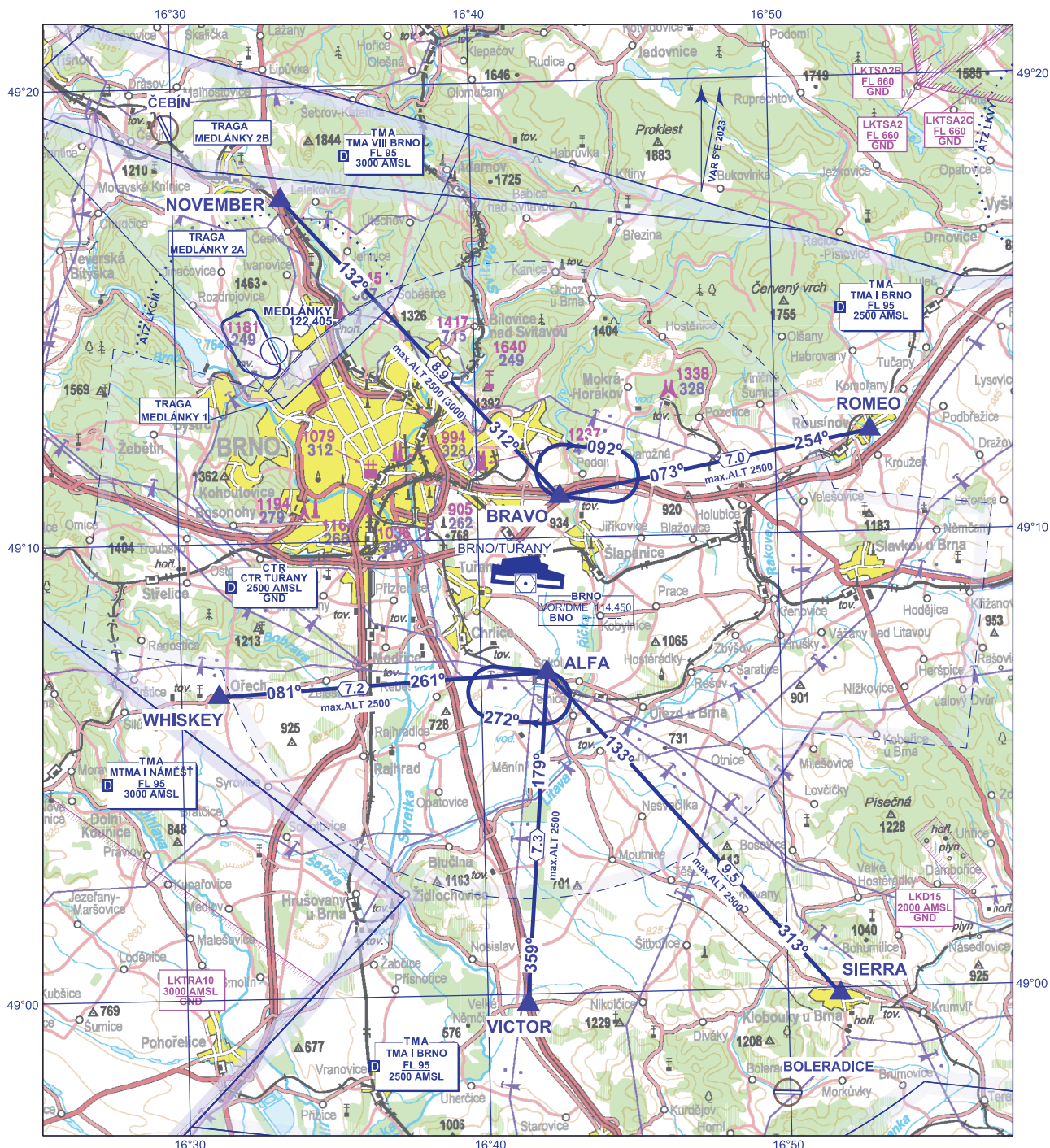
AD ELEV 778 ft/237 m

PRAHA RADAR	127.350
TUŘANY TOWER	119.605
TUŘANY GROUND	125.430
TUŘANY ATIS	131.105
EMERGENCY FREQ	121.500

BEARINGS ARE MAGNETIC
ALT AND ELEV IN FEET
DISTANCES ARE IN NM

VFR Arrivals and Departures Chart BRNO/TUŘANY

ALTITUDES IN BRACKETS
ARE FOR NIGHT FLIGHTS

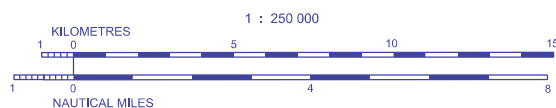


change: new LKD15

Description of all TRA GAA areas see ENR 5.5

ALFA	49° 07' 03"N 016° 42' 12"E	SIERRA	48° 59' 52"N 016° 51' 44"E
BRAVO	49° 10' 54"N 016° 42' 45"E	WHISKEY	49° 06' 39"N 016° 31' 15"E
ROMEO	49° 12' 13"N 016° 53' 10"E	VICTOR	48° 59' 47"N 016° 41' 20"E
NOVEMBER	49° 17' 32"N 016° 33' 37"E		

1502 Elevation of Top (AMSL) of obstacle
499 Height of Obstacle (AGL)



Posloupnost traťových bodů / Waypoint sequence**Přilety / Arrivals**

<i>Arrival</i>	<i>Posloupnost traťových bodů Waypoint sequence</i>
ROMEO 1	ROMEO - BRAVO
NOVEMBER 1	NOVEMBER - BRAVO
SIERRA 1	SIERRA - ALFA
VICTOR 1	VICTOR - ALFA
WHISKEY 1	WHISKEY - ALFA

Odlety / Departures

<i>Departure</i>	<i>Posloupnost traťových bodů Waypoint sequence</i>
ROMEO 1	BRAVO - ROMEO
NOVEMBER 1	BRAVO - NOVEMBER
SIERRA 1	ALFA - SIERRA
VICTOR 1	ALFA - VICTOR
WHISKEY 1	ALFA - WHISKEY