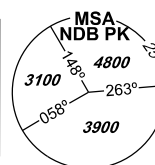
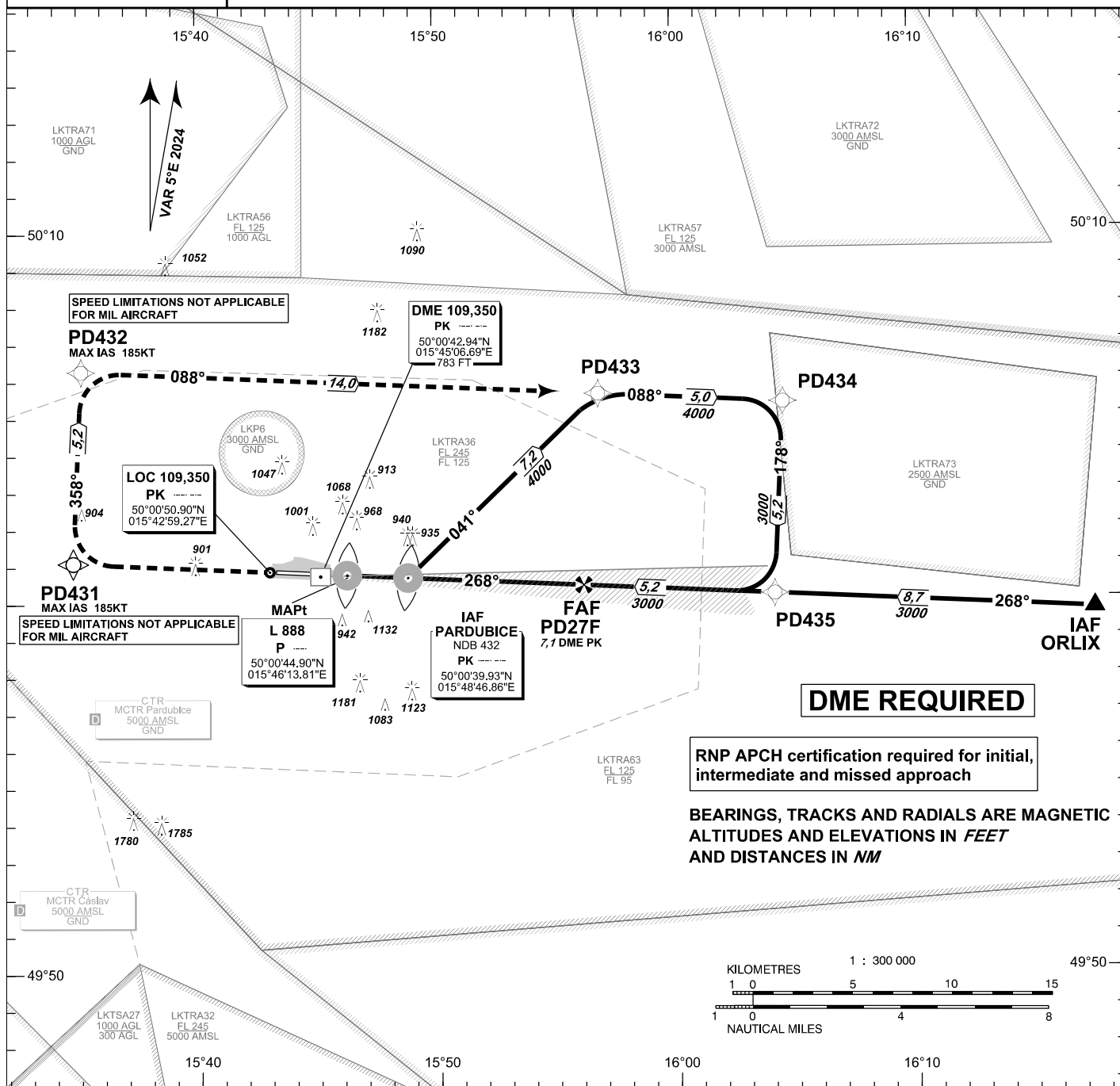


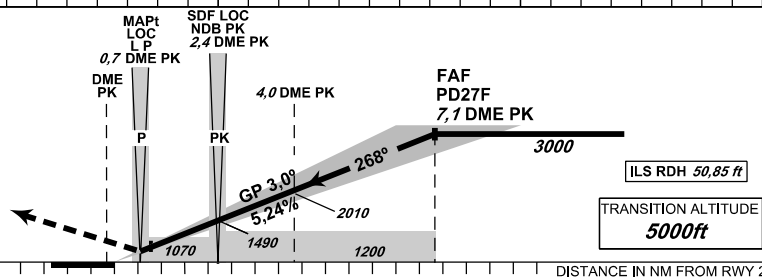
**INSTRUMENT  
APPROACH  
CHART - ICAO****AERODROME ELEV 741**  
**THR RWY 27 ELEV 731**  
**OCH RELATED TO THR RWY 27****PARDUBICE****RADAR** 128,365 267,300 O/R  
**PRECISION** 296,825 O/R 123,300 O/R reserve  
**TOWER** 120,155 120,205 reserve**PARDUBICE**  
**ILS Y**  
**RWY 27****MISSSED APPROACH:**

Climb straight ahead to PD431,  
turn right to PD432, turn right to PD433  
and join Initial approach via PD434.  
Climb to 4000ft.

MA turn: MAX IAS limited to 185 kt

SPEED LIMITATIONS NOT APPLICABLE  
FOR MIL AIRCRAFT

THR 500046.50N, 0154521.56E  
ELEV 731



OCA/OCH		A	B	C	D
Straight - in	CAT I	ft 889 / 168	912 / 181	920 / 189	930 / 199
Approach	LOC	ft 1070 / 340			
Circling South of AD Only!		ft 1240 / 510	1430 / 700	1580 / 850	1730 / 1010

DME PK	NM	7	6	5	4	3	2	1
ALTITUDES	ft	2960	2640	2330	2010	1690	1370	1050

		kt	80	100	120	140	160	180
FAF - MAPt 6,4 NM		min:sec	4:46	3:46	3:12	2:45	2:24	2:08
Rate of descent		ft/min	430	540	650	750	860	970

change: coordinates of NDB PK, L P; new obstacle 913 ft

Timing is not authorized for defining the MAPt.

Seznam traťových bodů / Way point list		
PD431	50 01 06,03 N	015 34 45,03 E
PD432	50 06 16,69 N	015 35 07,22 E
PD433	50 05 36,10 N	015 56 49,25 E
PD434	50 05 20,62 N	016 04 34,47 E
PD435	50 00 09,87 N	016 04 09,11 E
PD27F	50 00 25,78 N	015 56 09,06 E