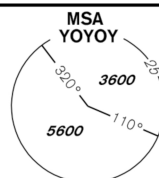
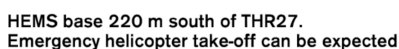


AERODROME ELEV 1417 ft
THR RWY 09 ELEV 1356 ft
OCH RELATED TO THR RWY 27

PRAHA RADAR	118,650
BUDĚJOVICE INFORMATION	135,930
PRAHA FIC	126,100
EMERGENCY FREQ	121,500

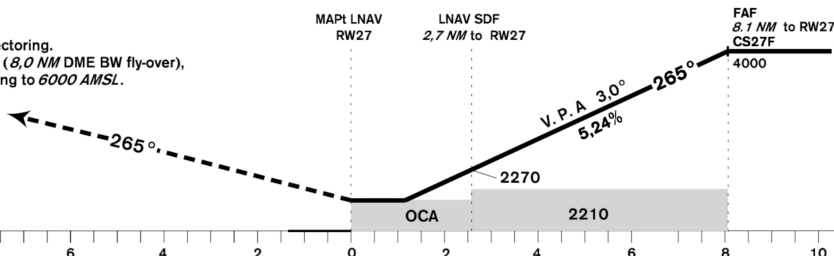


ČESKÉ
BUDĚJOVICE
RNP
RWY 27



Climb on track 265° to 6000 AMSL, expect vectoring.
In case of RCF climb on track 265° to CS285 (8,0 NM DME BW fly-over),
turn right to YOYOY (max IAS 200kt), in climbing to 6000 AMSL.

THR 485646,99N 0142626,00E
FLV 1356



TRANSITION ALTITUDE
5000ft

TCH 49.2 ft

		8	6	4	2
missed approach gradient 2.5%					
OCA / OCH		A	B	C	D
LNAV		2070 / 720			
LNAV / VNAV	ft	1882 / 525			
LPV CAT I	ft	1761 / 405	1774 / 417	1782 / 425	1792 / 436
CIRCLING (south of AD only)	ft	2070 / -	2170 / -	2880 / -	2920 / -

missed approach gradient 4.0%

OCA / OCH		A	B	C	D
LNAV		1800/460			
LNAV / VNAV	ft	1660/304			
LPV CAT I	ft	1556/200	1563/207	1571/215	1582/225
CIRCLING (south of AD only)	ft	2070/-	2170/-	2880/-	2920/-

DIST THR NM	8	7	6	5	4	3	2	1
ALTITUDES ft	3950	3630	3320	3000	2680	2360	2050	1730

GS	<i>kt</i>	<i>80</i>	<i>100</i>	<i>120</i>	<i>140</i>	<i>160</i>	<i>180</i>
FAF - MAPt <i>g</i>, 1 NM	min:sec	6:07	4:53	4:04	3:30	3:03	2:43
Rate of descent (5.24%)	<i>ft/min</i>	<i>420</i>	<i>530</i>	<i>640</i>	<i>740</i>	<i>850</i>	<i>950</i>

Timing is not authorized for defining the MAPt.

change: LKRMZ1 ČESKÉ BUDĚJOVICE removed from the chart

Posloupnost traťových bodů / Way point sequence

Od / From IAF YOYOY			Od / From IAF ORODE			Seznam traťových bodů / Way point list		
YOYOY	IAF	fly-by	ORODE	IAF	fly-by	YOYOY	485646.94N	0142539.00E
CS272		fly-by	CS27F	FAF	fly-by	ORODE	485646.27N	0144438.25E
CS273		fly-by	RW27	MAPt	fly-over	CS272	485247.02N	0143400.64E
ORODE	IF	fly-by				CS273	485246.46N	0144436.92E
CS27F	FAF	fly-by				CS27F	485646.33N	0143847.29E
RW27	MAPt	fly-over				RW27	485646.9936N	0142625.5959E

SBAS FAS Data Block

Vstupní data / Input data

Parametry / Parameters	Hodnoty / Values
Operation Type	0
SBAS Provider	1 (EGNOS)
Airport Identifier	LKCS
Runway	27
Runway Letter	0 (none)
Approach Performance Designator	0
Route Indicator	
Reference Path Data Selector	0
Reference Path Identifier	E27A
LTP/FTP Latitude	485646.9935N
LTP/FTP Longitude	0142625.5960E
LTP/FTP Ellipsoidal Height (metres)	459.7
FPAP Latitude	485646.9480N
Delta FPAP Latitude (seconds)	-0.0455
FPAP Longitude	0142437.4750E
Delta FPAP Longitude (seconds)	-108.1210
Threshold Crossing Height	49.2
TCH Units Selector	0 (feet)
Glidepath Angle (degrees)	3.00
Course Width (metres)	107.00
Length Offset (metres)	0
HAL (metres)	40.0
VAL (metres)	35.0

Výstupní data / Output data

Parametry / Parameters	Hodnoty / Values
Data Block	10 13 03 0B 0C 1B 00 00 01 37 32 05 23 69 01 15 78 79 32 06 F5 25 A5 FF FF 4E B3 FC EC 01 2C 01 6C 00 C8 AF 60 47 52 7A
Calculated CRC Value	6047527A

Required Additional Data (not CRC wrapped) / Požadovaná dodatečná data (nezabalené do CRC)

Required for procedure coding in ARINC 424 records / Vyžadováno pro kódování prpostupu v ARINC 424:

Parametry / Parameters	Hodnoty / Values
ICAO Code	LK
LTP/FTP Orthometric Height (metres)	413.4