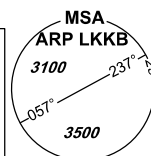


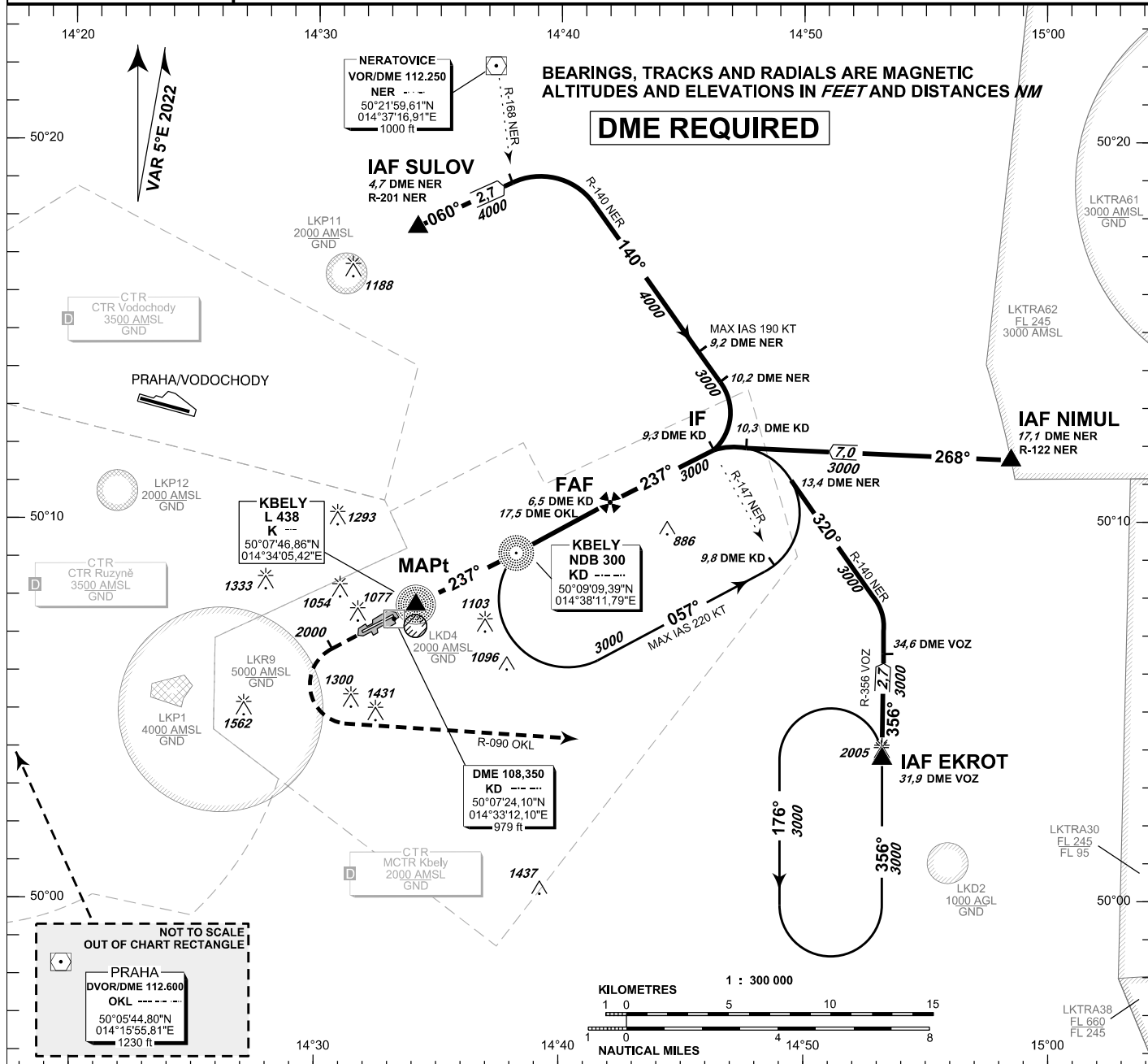
INSTRUMENT APPROACH CHART - ICAO

AERODROME ELEV **939**
THR RWY 06 ELEV **939**
THR RWY 24 ELEV **916**
ARP **919**
OCH RELATED TO THR RWY 24

KBELY RADAR 124,680 291,050 reserve
KBELY PRECISION 126,760 123,300 reserve
KBELY TOWER 120,880 134,730 reserve



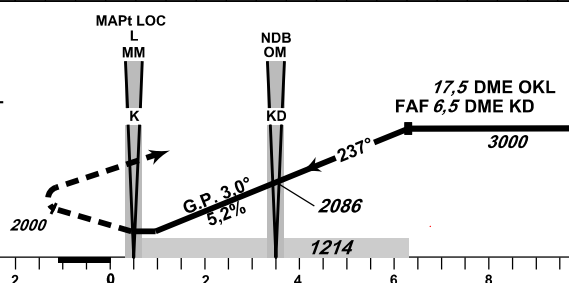
**KBELY
NDB
RWY 24**



MISSED APPROACH:

Climb to **2000ft** MAX **2.7NM**
KD DME/MNM **8.7NM** OKL DME,
turn left intercept radial R 090 OKL
then climb to **3000ft** continue to EKROT

THR 500731.93N, 0143321.70E
ELEV **916**



TRANSITION ALTITUDE
5000ft

MISSED APPROACH:

to IAS ≤ 185 kt min. bank angle 15°
to IAS ≤ 230 kt min. bank angle 20°
IAS MAX = 230 KT

OCA/OCH			A	B	C	D
Straight - in Approach	NDB	ft	1214 / 296		1312 / 394	
	PAR	ft	1155 / 239			
Circling (South only)		ft	1345	1656	1971	-

DME KD	NM	6,5	5,0	4,0	3,0	2,0	1,0	0,5
ALTITUDES	ft	3000	2500	2241	1912	1607	1286	1115

		kt	60	90	120	150	180
FAF - MAPt 5,8 NM		min:sec	5:49	3:53	2:55	2:20	1:57
Rate of descent		ft/min	315	470	640	790	960

Timing is not authorized for defining the MAPt

change: vertical limit of LKD4