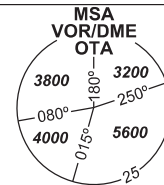


# INSTRUMENT APPROACH CHART - ICAO

AERODROME ELEV **842**  
THR RWY 22 ELEV **808**

PRAHA RADAR 119,375  
121,500  
MOŠNOV TOWER 120,805  
121,500



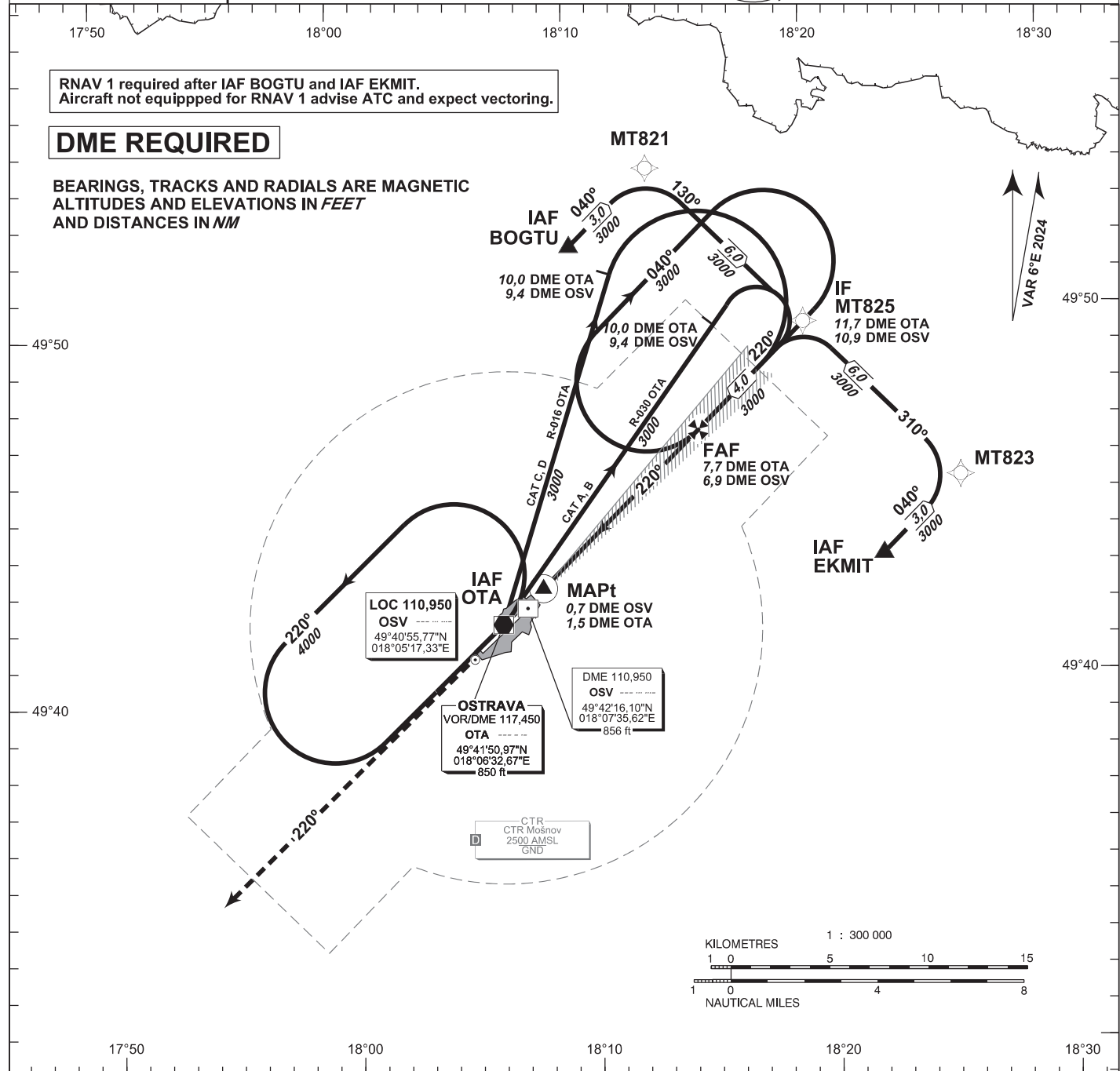
**OSTRAVA/Mošnov**  
**ILS**

**RWY 22**

RNAV 1 required after IAF BOGTU and IAF EKMIT.  
Aircraft not equipped for RNAV 1 advise ATC and expect vectoring.

## DME REQUIRED

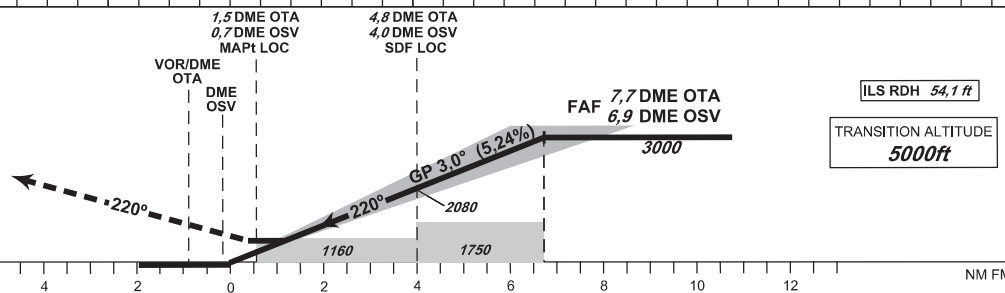
BEARINGS, TRACKS AND RADIALS ARE MAGNETIC  
ALTITUDES AND ELEVATIONS IN **FEET**  
AND DISTANCES IN **NM**



### MISSED APPROACH:

Climb on track 220° to 4000 ft AMSL  
expect vectoring  
In case of RCF climb on track 220°  
to 8.0 NM DME OTA and  
turn right to VOR/DME OTA  
in climbing to 4000 ft AMSL

THR 494225.64N, 0180742.39E  
ELEV 808



OCA/OCH		A	B	C	D
CAT I	ft	963 / 155	975 / 167	983 / 175	993 / 185
CAT II	ft	857 / 49	868 / 60	880 / 72	893 / 85
LOC	ft	1160 / 350			
Circling	ft	1400 / 560	1440 / 600	1690 / 850	2100 / 1260

CAT III approved

change: MOCA In profile

DME OSV NM	6	5	4	3	2	1
DME OTA NM	6.8	5.8	4.8	3.8	2.8	1.8
DIST THR NM	5.8	4.8	3.8	2.8	1.8	0.8
ALTITUDES ft	2720	2400	2080	1760	1440	1120

FAF - MAPt	6.2 NM	kt	80	100	120	140	160	180
min:sec			4:39	3:43	3:06	2:39	2:19	2:04
Rate of descent (5.24%)		ft/min	420	530	640	740	850	960

Timing is not authorized for defining the MAPt.

INITIAL APPROACH ILS RWY 22

Recommended coding:

Path Terminator	Waypoint				Cours / Track MAG° (True°)	DIST NM	Turn Direction	Constraints		Nav Spec.	Remarks
	ID	Type	Flyover	Coordinates				Level	Speed		
via <b>BOGTU</b>											
IF	BOGTU	IAF	NO	495204.59N 0180955.48E	---	---	---	A3000+	---	RNAV 1	---
TF	MT821	---	NO	495408.55N 0181316.88E	040 (046.37)	3.0	---	---	---	RNAV 1	---
TF	MT825	IF	NO	494948.05N 0181939.97E	130 (136.41)	6.0	RIGHT	---	---	RNAV 1	---
via <b>EKMIT</b>											
IF	EKMIT	IAF	NO	494323.64N 0182240.63E	---	---	---	A3000+	---	RNAV 1	---
TF	MT823	---	NO	494527.22N 0182601.91E	040 (046.53)	3.0	---	---	---	RNAV 1	---
TF	MT825	IF	NO	494948.05N 0181939.97E	310 (316.57)	6.0	LEFT	---	---	RNAV 1	---

ILS or LOC APPROACH RWY 22

Descent angle (°)	3.00			
Type	IF	FAF/FAP	SDF LOC	MAPt LOC
Fix	MT825 (11.7 DME OTA) (10.9 DME OSV)	(7.7 DME OTA) (6.9 DME OSV)	(4.8 DME OTA) (4.0 DME OSV)	(1.5 DME OTA) (0.7 DME OSV)
Fix coordinates	494948.05N 0181939.97E	494703.29N 0181511.99E	494504.37N 0181159.16E	494247.25N 0180817.30E
Fix formation bearing (True°)	046.83 OTA 046.30 OSV	047.08 OTA 046.30 OSV	047.55 OTA 046.30 OSV	050.31 OTA 046.30 OSV
Fix formation distances (NM)	11.65 DME OTA 10.87 DME OSV	7.66 DME OTA 6.88 DME OSV	4.78 DME OTA 4.00 DME OSV	1.47 DME OTA 0.69 DME OSV