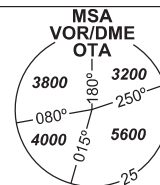
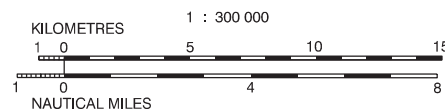
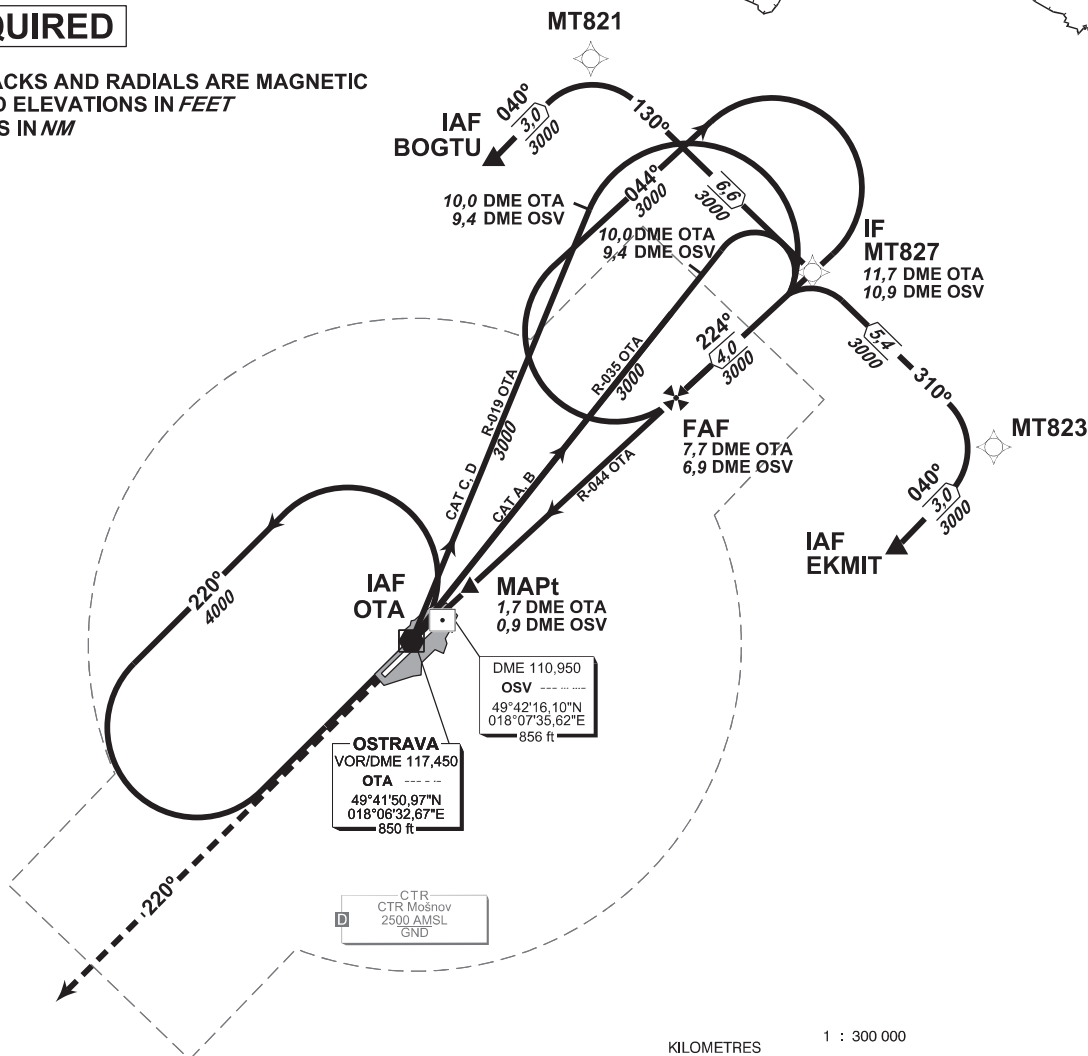
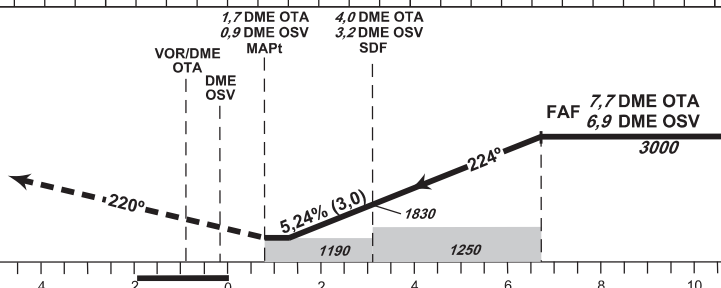


**INSTRUMENT  
APPROACH  
CHART - ICAO**AERODROME ELEV **842**  
THR RWY 22 ELEV **808**PRAHA RADAR 119,375  
121,500  
MOŠNOV TOWER 120,805  
121,500**OSTRAVA/Mošnov  
VOR  
RWY 22**RNAV 1 required after IAF BOGTU and IAF EKMIT.  
Aircraft not equipped for RNAV 1 advise ATC and expect vectoring.**DME REQUIRED**BEARINGS, TRACKS AND RADIALS ARE MAGNETIC  
ALTITUDES AND ELEVATIONS IN **FEET**  
AND DISTANCES IN **NM****MISSED APPROACH:**Climb on track 220° to 4000 ft AMSL  
expect vectoring  
In case of RCF climb on track 220°  
to 8,0 NM DME OTA and  
turn right to VOR/DME OTA  
in climbing to 4000 ft AMSLTHR 494225.64N, 0180742.39E  
ELEV 808TRANSITION ALTITUDE  
**5000ft**

NM FM THR22

OCA/OCH		A	B	C	D
Straight-in Approach	ft	1190/390			
Circling	ft	1400/560	1440/600	1690/850	2100/1260

DME OTA NM	7	6	5	4	3	2
DME OSV NM	6,2	5,2	4,2	3,2	2,2	1,2
DIST THR NM	6,0	5,0	4,0	3,0	2,0	1,0
ALTITUDES ft	2780	2470	2150	1830	1510	1190

	ft	80	100	120	140	160	180
FAF - MAPt 6,0 NM	min:sec	4:29	3:35	2:59	2:34	2:14	1:59
Rate of descent (5,24%)	ft/min	420	530	640	750	850	960

change: SDF position, OCA/OCH table, SDF crossing ALT

Timing is not authorized for defining the MAPt.

INITIAL APPROACH VOR RWY 22

Recommended coding:

Path Terminator	Waypoint				Cours / Track MAG° (True°)	DIST NM	Turn Direction	Constraints		Nav Spec.	Remarks
	ID	Type	Flyover	Coordinates				Level	Speed		
via <b>BOGTU</b>											
IF	BOGTU	IAF	NO	495204.59N 0180955.48E	---	---	---	A3000+	---	RNAV 1	---
TF	MT821	---	NO	495408.55N 0181316.88E	040 (046.37)	3.0	---	---	---	RNAV 1	---
TF	MT827	IF	NO	494921.95N 0182018.26E	130 (136.41)	6.6	RIGHT	---	---	RNAV 1	---
via <b>EKMIT</b>											
IF	EKMIT	IAF	NO	494323.64N 0182240.63E	---	---	---	A3000+	---	RNAV 1	---
TF	MT823	---	NO	494527.22N 0182601.91E	040 (046.53)	3.0	---	---	---	RNAV 1	---
TF	MT827	IF	NO	494921.95N 0182018.26E	310 (316.57)	5.4	LEFT	---	---	RNAV 1	---

APPROACH VOR RWY 22

Descent angle (°)	3.00			
Type	IF	FAF	SDF	MAPt
Fix	MT827 (11.7 DME OTA) (10.9 DME OSV)	(7.7 DME OTA) (6.9 DME OSV)	(4.5 DME OTA) (3.7 DME OSV)	(1.7 DME OTA) (0.9 DME OSV)
Fix coordinates	494921.95N 0182018.26E	494647.83N 0181535.28E	494445.06N 0181150.49E	494256.92N 0180832.95E
Fix formation bearing (True°)	049.77 OTA	049.77 OTA	049.77 OTA	049.77 OTA
Fix formation distances (NM)	11.67 DME OTA 10.88 DME OSV	7.68 DME OTA 6.89 DME OSV	4.50 DME OTA 3.71 DME OSV	1.70 DME OTA 0.92 DME OSV