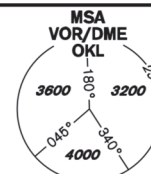


# INSTRUMENT APPROACH CHART - ICAO

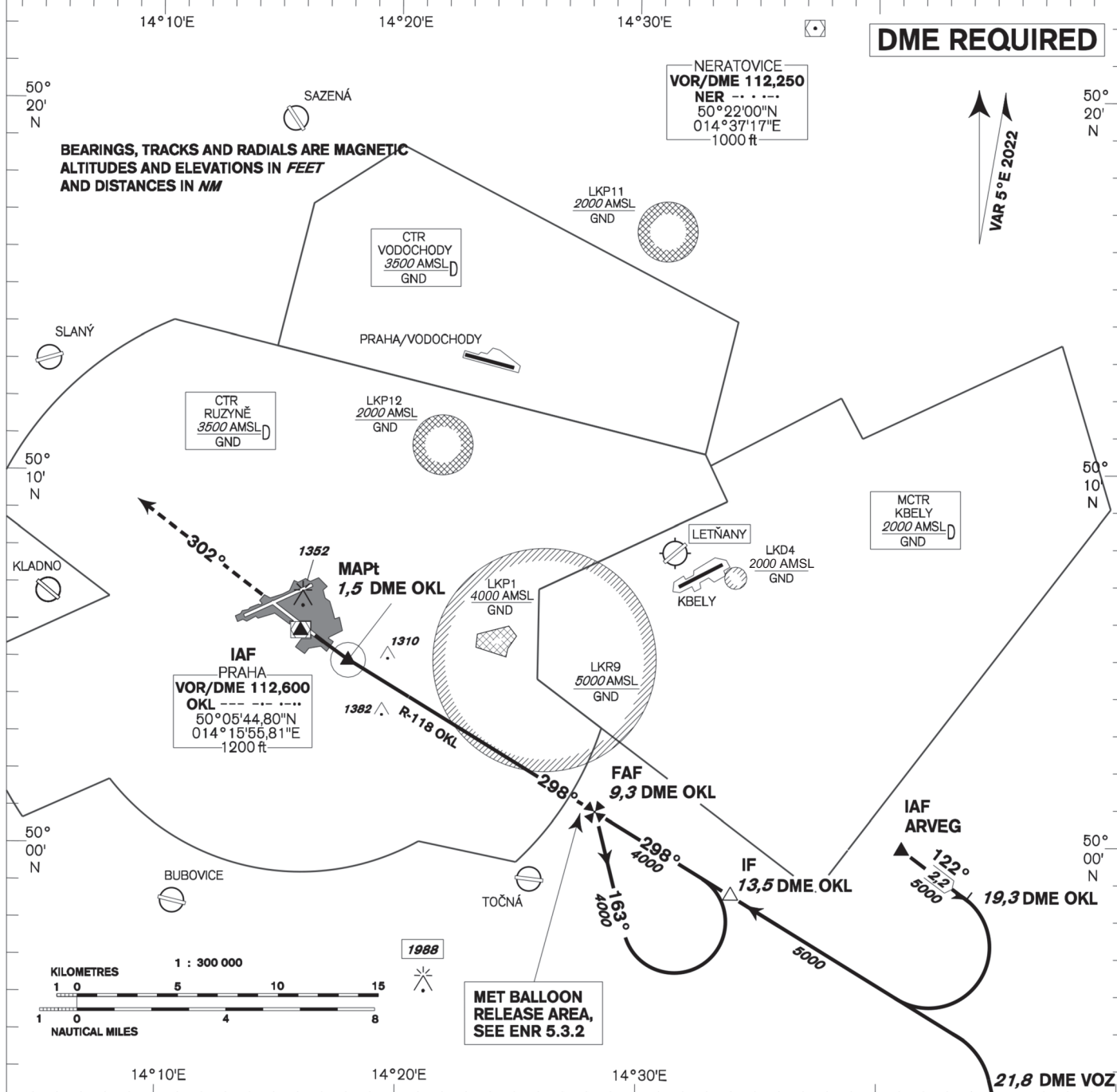
AERODROME ELEV **1234**  
THR RWY 30 ELEV **1232**  
OCH RELATED TO THR RWY 30

PRAHA RADAR 127,580  
RUZYŇ RADAR 119,010  
SUPPLEMENTARY FREQ 136,080  
121,500  
134,560  
RUZYŇ TOWER  
SUPPLEMENTARY FREQ 118,110  
121,500



**PRAHA/Ruzyň**  
**VOR**  
**RWY 30**

**DME REQUIRED**



## MISSED APPROACH:

Climb on track 302° to 4000ft, radar vectoring will be provided.

In case of RCF climb on track 302° to 4000ft, at 10NM DME OKL turn right to OKL and climb to 5000ft.

THR 500525.68N, 0141654.02E  
ELEV 1232

OCA/OCH					NM FM THR									
		A	B	C	D	DME OKL NM	THR DIST NM	ALTITUDES ft	kt	min:sec	ft/min	10	9	8
Straight-in Approach	ft	1620 / 380				9,3	8,3	4240	80	5:50	420	3920	7,3	6,3
Circling		see the circling approach chart				1620	1700	2650	140	3:20	740	2970	5,3	4,3

change: vertical limits of LKD4

Timing is not authorized for defining the MAPt.