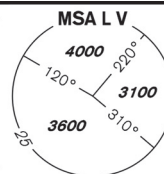


**INSTRUMENT  
APPROACH  
CHART - ICAO**

AERODROME ELEV **919**  
THR RWY 10 ELEV **880**  
OCH RELATED TO THR RWY 10

VODOCHODY  
RADAR 127,480  
TOWER 133,080  
121,500



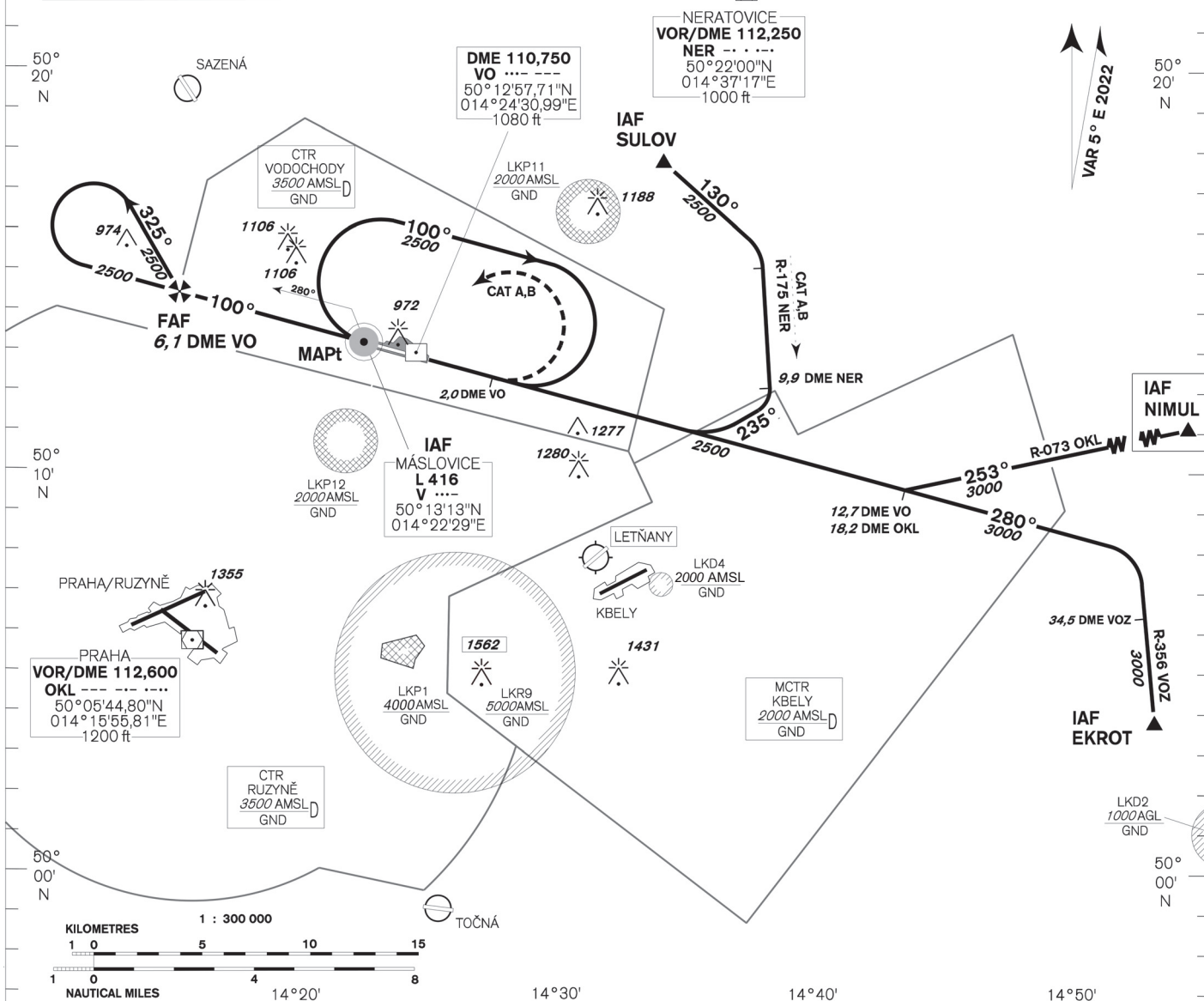
**PRAHA/VODOCHODY  
NDB  
RWY 10  
(ACFT CAT A,B,C)**

14°10'E 14°20' 14°30' 14°40' 14°50'

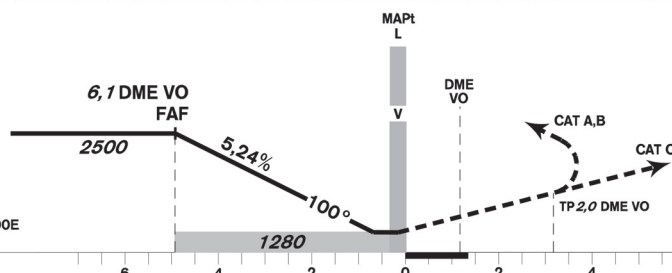
BEARINGS, TRACKS AND RADIALS ARE MAGNETIC  
ALTITUDES AND ELEVATIONS IN *FEET* AND DISTANCES IN *NM*

**DME REQUIRED**

AFTER IAF SULOV  
SPEED LIMITED TO MAX IAS 190 KT



TRANSITION ALTITUDE  
**5000ft**



**MISSED APPROACH:**  
CAT A,B: Climb on track 100°, at 2,0 DME VO turn left to L V in climbing to 2500ft AMSL  
CAT C: Climb on track 100° to 2500ft AMSL, Expect radar vectoring  
CAT A,B,C: In case of RCF climb on track 100° to 5,0 DME VO, turn left to L V. Climb to 2500ft AMSL

THR 501310,43N 0142243,00E  
ELEV 880

NM FM THR10

OCA/OCH		A	B	C
Straight in approach	ft		1280/400	
Circling (north of AD only)	ft	1330/410	1420/500	1520/600

DME VO	NM	6,1	6	5	4	3	2
DIST THR	NM	4,9	4,8	3,8	2,8	1,8	0,8
ALTITUDES	ft	2500	2470	2150	1830	1510	1200

	kt	80	100	120	140	160	180
FAF - MAPt 4,8 NM	min:sec	3:35	2:52	2:23	2:02	1:47	1:35
Rate of descent 5,24%	ft/min	420	530	640	740	850	960

Timing is not authorized for defining the MAPt.

change: vertical limits of LKD4