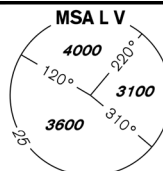


**INSTRUMENT
APPROACH
CHART - ICAO**

AERODROME ELEV **919**
THR RWY 28 ELEV **915**
OCH RELATED TO THR RWY 28

VODOCHODY
RADAR **127,480**
TOWER **133,080**
121,500

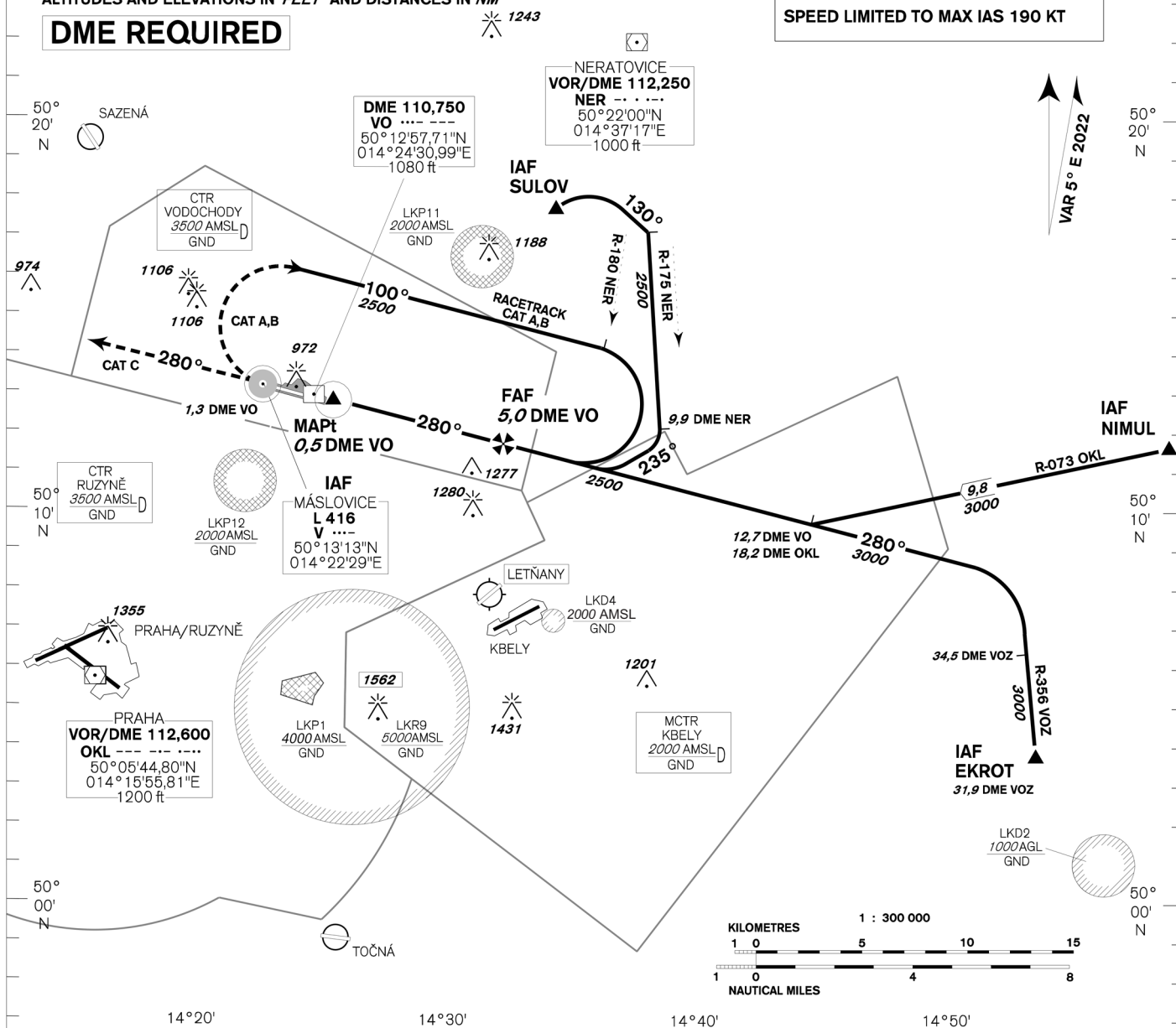


**PRAHA/VODOCHODY
NDB
RWY 28
(ACFT CAT A,B,C)**

BEARINGS, TRACKS AND RADIALS ARE MAGNETIC
ALTITUDES AND ELEVATIONS IN **FEET** AND DISTANCES IN **NM**

DME REQUIRED

AFTER IAF SULO
SPEED LIMITED TO MAX IAS 190 KT

**MISSED APPROACH:**

CAT A,B: Climb on track 280°, at L V turn right and continue on racetrack in climbing to **2800ft AMSL**.
CAT C: Climb on track 280° to **2800ft AMSL**, radar vectoring will be provided
CAT A,B,C: In case of RCF climb on track 280° to **2800ft AMSL**, at **5,0 DME VO** turn right to L V

TRANSITION ALTITUDE
5000ft

THR 501249,66N 0142444,88E
ELEV 915

NM FM THR28

OCA/OCH		A	B	C
Straight in approach	ft	1280/360		
Circling (north of AD only)	ft	1330/410	1420/500	1520/600

DME VO NM	5	4	3	2	1
DIST THR NM	4,8	3,8	2,8	1,8	0,8
ALTITUDES ft	2500	2180	1860	1540	1230

	kt	80	100	120	140	160	180
FAF - MAPt 4,5 NM	min:sec	3:23	2:42	2:15	1:56	1:41	1:30
Rate of descent 5,24%	ft/min	420	530	640	740	850	960

Timing is not authorized for defining the MAPt.

change: vertical limits of LKD4