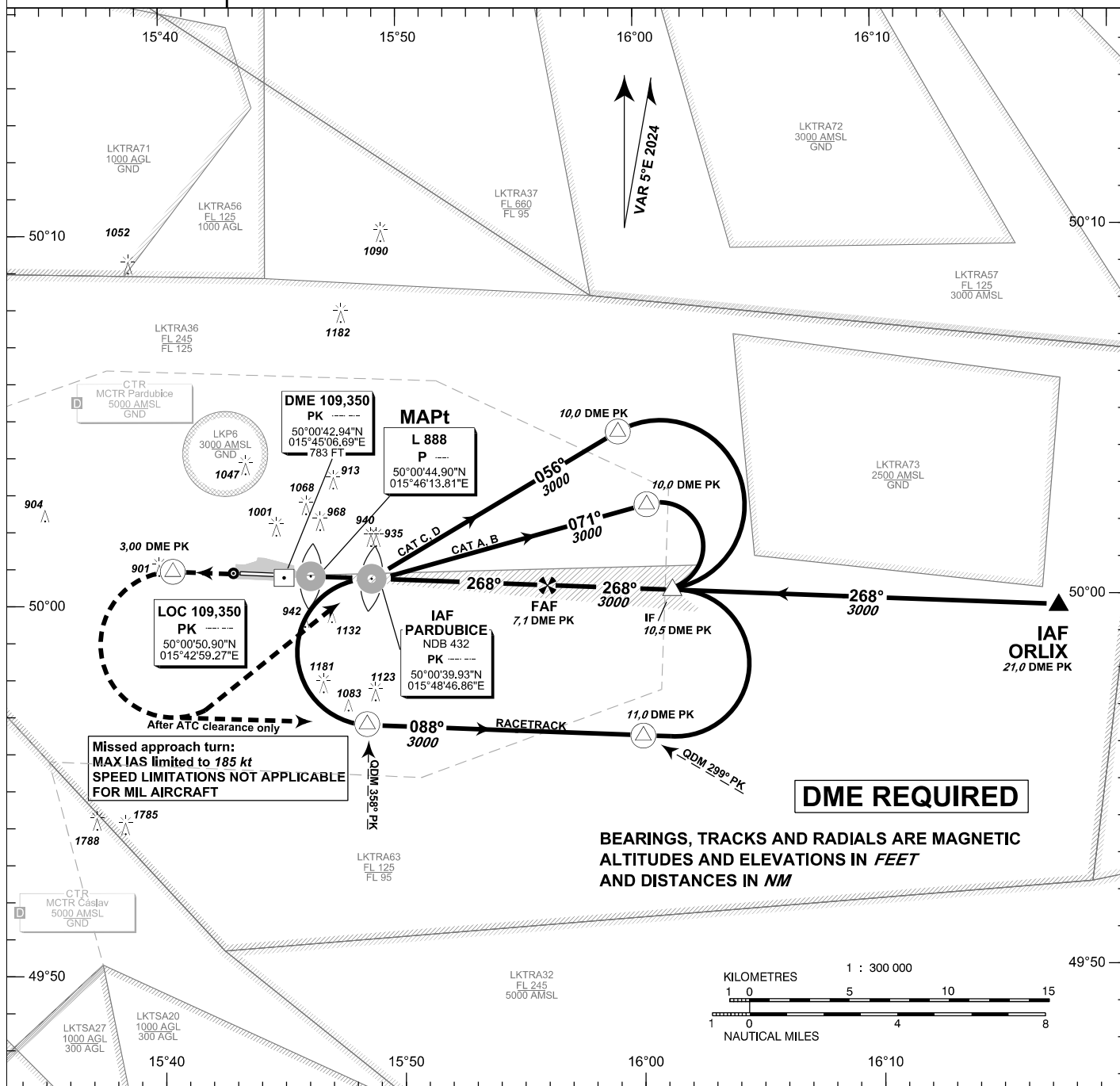


**INSTRUMENT  
APPROACH  
CHART - ICAO****AERODROME ELEV 741  
THR RWY 27 ELEV 731  
OCH RELATED TO THR RWY 27****PARDUBICE**

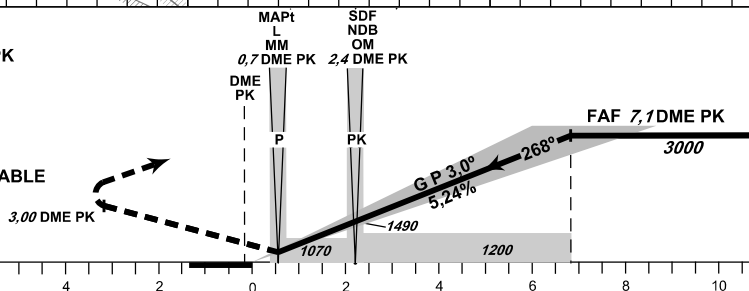
RADAR	128,365	267,300 O/R
PRECISION	296,825 O/R	123,300 O/R reserve
TOWER	120,155	120,205 reserve

**PARDUBICE  
ILS Z  
RWY 27****MISSED APPROACH:**

Climb straight ahead to 3,0 DME PK  
turn left to NDB PK  
In climbing to 3000ft AMSL  
or according to ATC clearance

MA turn: MAX IAS limited to 185 kt  
SPEED LIMITATIONS NOT APPLICABLE  
FOR MIL AIRCRAFT

THR 500046.50N, 0154521.56E  
ELEV 731

**ILS RDH 50,85 ft****TRANSITION ALTITUDE  
5000ft**

OCA/OCH			A	B	C	D
Straight-in	CAT I	ft	899/168	912/181	920/189	930/199
Approach	LOC	ft	1070/340			
Circling South of AD Only		ft	1240/510	1430/700	1580/850	1730/1010

DME PK	NM	7	6	5	4	3	2	1
ALTITUDES	ft	2960	2640	2330	2010	1690	1370	1050

FAF - MAPt 6,4 NM	kt	80	100	120	140	160	180
	min:sec	4:46	3:46	3:12	2:45	2:24	2:08
Rate of descent	ft/min	430	540	650	750	860	970

change: coordinates of NDB PK, L P; new obstacle 913 ft

Timing is not authorized for defining the MAPt.