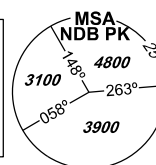
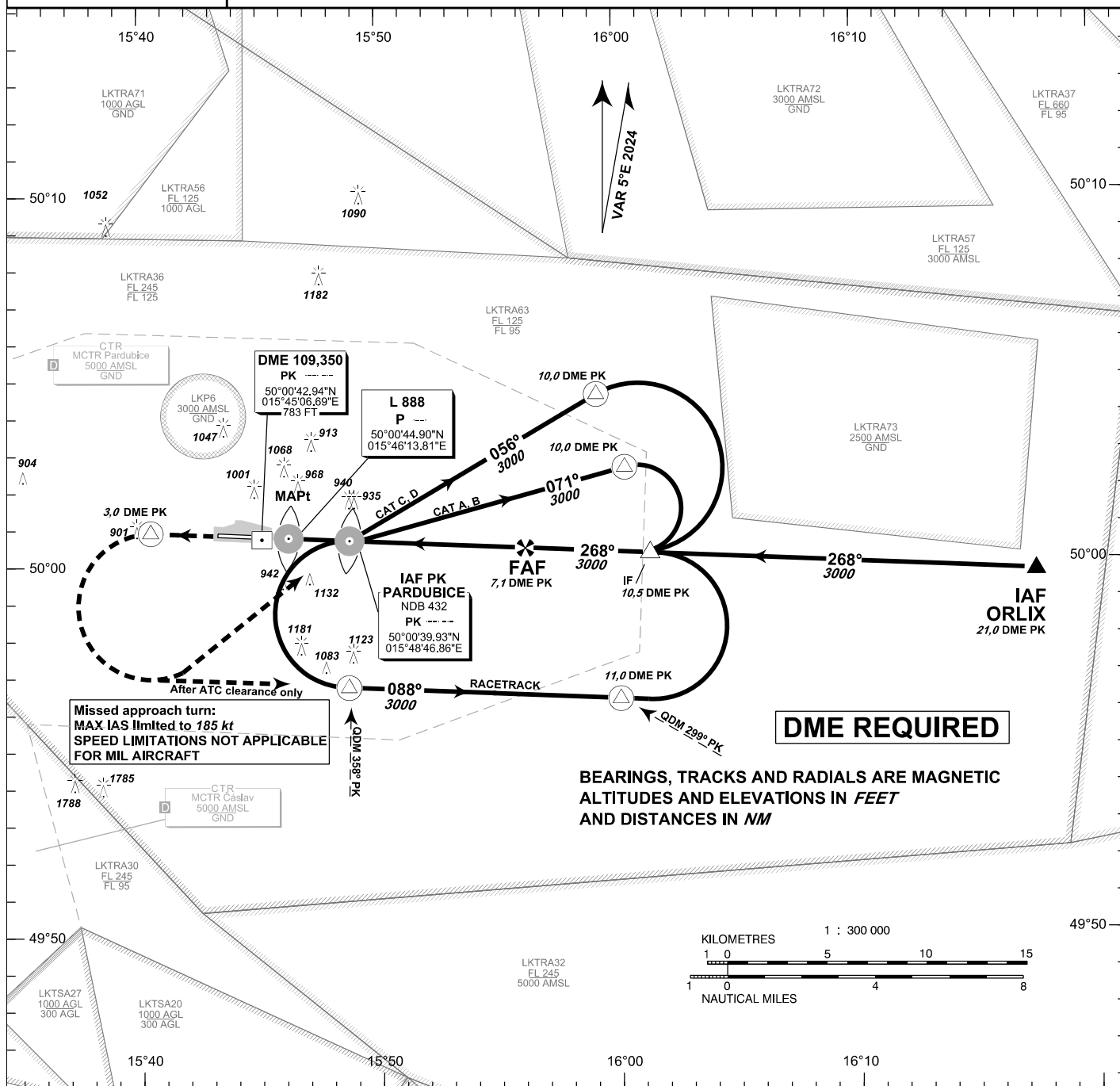


**INSTRUMENT
APPROACH
CHART - ICAO****AERODROME ELEV 741**
THR RWY 27 ELEV 731
OCH RELATED TO THR RWY 27

PARDUBICE

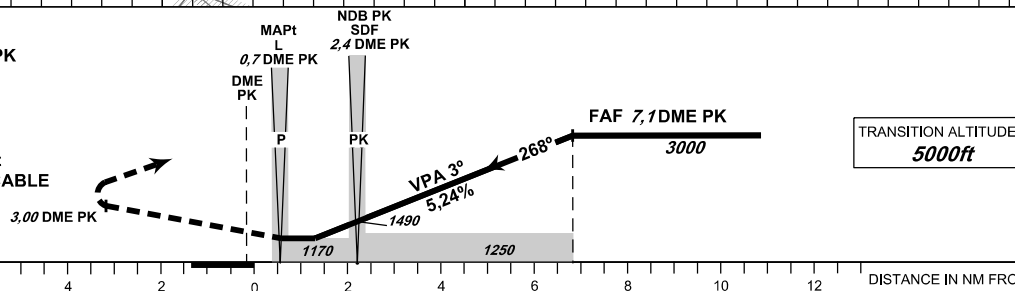
RADAR	128,365	267,300 O/R
PRECISION	296,825 O/R	123,300 O/R reserve
TOWER	120,155	120,205 reserve

**PARDUBICE
NDB****RWY 27****MISSED APPROACH:**

Climb straight ahead to 3,0 DME PK
turn left to NDB PK
in climbing to 3000ft AMSL
or according to ATC clearance

MA turn: MAX IAS limited to 185 kt
SPEED LIMITATIONS NOT APPLICABLE
FOR MIL AIRCRAFT

THR 500046.50N, 0154521.56E
ELEV 731



OCA/OCH		A	B	C	D
Straight-in Approach	ft	1170/440			
Circling South of AD Only	ft	1240/510	1430/700	1580/850	1730/1010

DME PK	NM	7	6	5	4	3	2	1
ALTITUDES	ft	2960	2640	2330	2010	1690	1370	1050
FAF - MAPt 6,4 NM		kt	80	100	120	140	160	180
Rate of descent		min:sec	4:46	3:46	3:12	2:45	2:24	2:08
		ft/min	430	540	650	750	860	970

change: coordinates of NDB PK, L P; new obstacle 913 ft

Timing is not authorized for defining the MAPt.