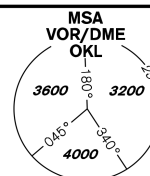
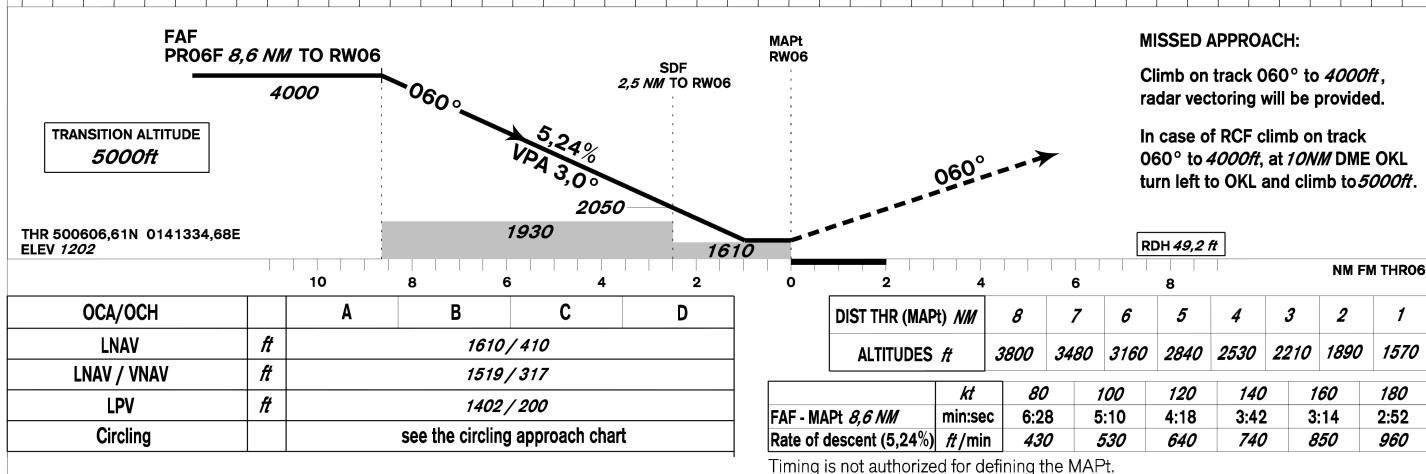
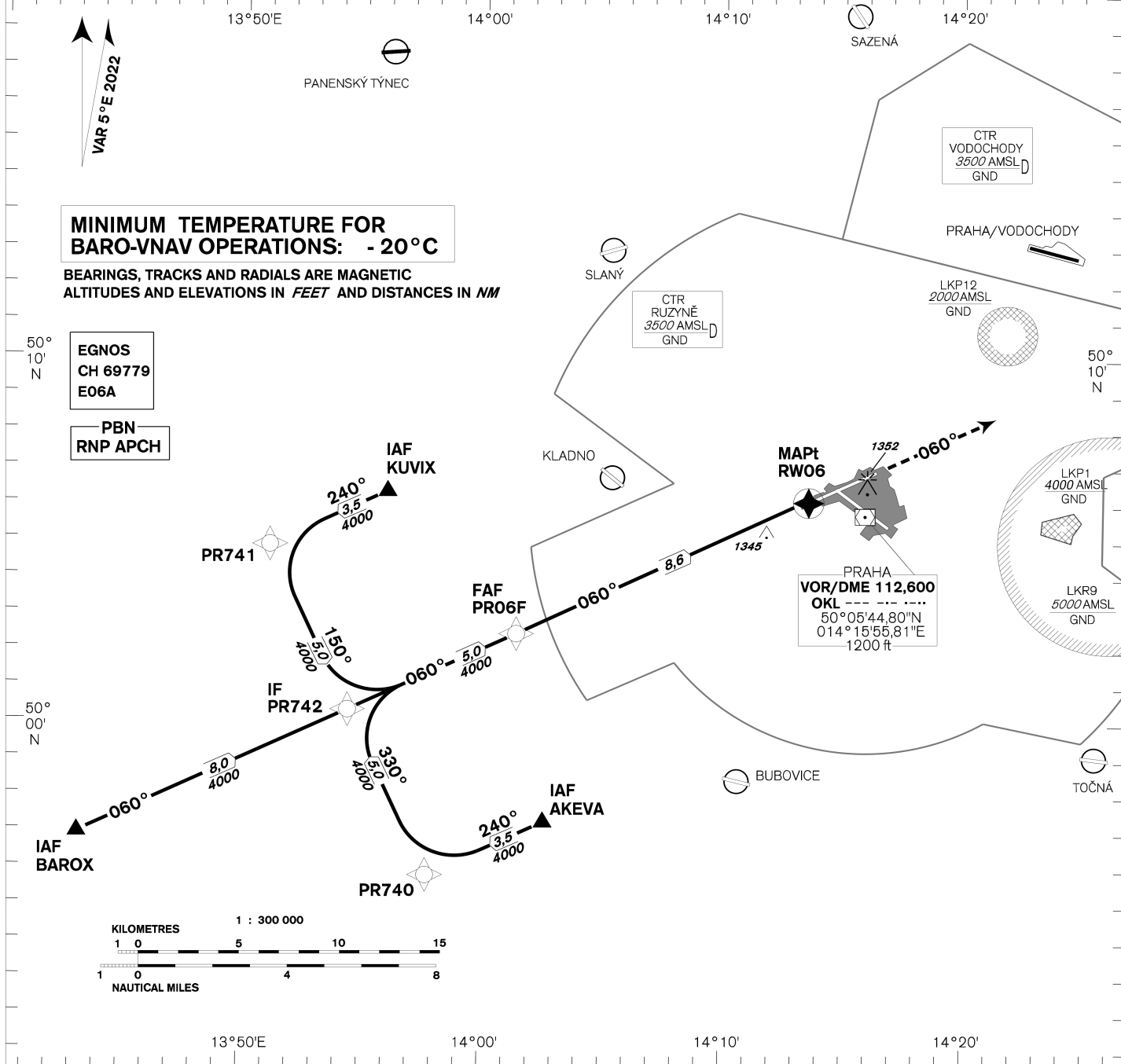


AERODROME ELEV 1234
THR RWY 06 ELEV 1202
OCH RELATED TO THR RWY 06

PRAHA RADAR	127,580
RUŽYŇĚ RADAR	119,010
SUPPLEMENTARY FREQ.	136,080
	121,500
RUŽYŇĚ TOWER	134,560
SUPPLEMENTARY FREQ.	118,110
	121,500



PRAHA/Ruzyně
RNP
RWY 06



change: horizontal and vertical limits of LKP1

Posloupnost traťových bodů / Way point sequence

Od / From IAF KUVIX			Od / From IAF BAROX			Seznam traťových bodů / Way point list	
KUVIX	IAF	fly-by	BAROX	IAF	fly-by	KUVIX	50 06 19,91 N 013 56 01,47 E
PR741		fly-by	PR742	IF	fly-by	AKEVA	49 57 17,56 N 014 02 37,59 E
PR742	IF	fly-by	PR06F	FAF	fly-by	BAROX	49 56 54,77 N 013 43 15,06 E
PR06F	FAF	fly-by	RWY06	MAPt	fly-over	PR740	49 55 48,83 N 013 5745,19 E
RW06	MAPt	fly-over				PR741	50 04 50,89 N 013 51 08,37 E

Od / From IAF AKEVA		
AKEVA	IAF	fly-by
PR740		fly-by
PR742	IF	fly-by
PR06F	FAF	fly-by
RW06	MAPt	fly-over

SBAS FAS Data Block

Vstupní data / Input Data

Parametry / Parameters	Hodnoty / Values
Operation Type	0
SBAS Provider	1 (EGNOS)
Airport Identifier	LKPR
Runway	06
Runway Letter	0 (None)
Approach Performance Designator	0
Route Indicator	
Reference Path Data Selector	0
Reference Path Identifier	E06A
LTP/FTP Latitude	500606.6100N
LTP/FTP Longitude	0141334.6800E
LTP/FTP Ellipsoidal Height (metres)	412.2
FPAP Latitude	500657.4200N
Delta FPAP Latitude (seconds)	50.8100
FPAP Longitude	0141624.1200E
Delta FPAP Longitude (seconds)	169.4400
Threshold Crossing Height	49.2
TCH Units Selector	0 (feet)
Glidepath Angle (degrees)	3.00
Course Width (metres)	105.00
Length Offset (metres)	0
HAL (metres)	40.0
VAL (metres)	35.0

Výstupní data / Output Data

Parametry / Parameters	Hodnoty / Values
Data Block	10 12 10 0B 0C 06 00 00 01 36 30 05 24 5A 80 15 B0 F2 1A 06 1A 24 F4 8C 01 C0 2B 05 EC 01 2C 01 64 00 C8 AF 69 EA 09 6F
Calculated CRC Value	69EA096F

Požadovaná dodatečná data / Required Additional Data (not CRC wrapped)

Parametry / Parameters	Hodnoty / Values
ICAO Code	LK
LTP/FTP Orthometric Height (metres)	366.4