

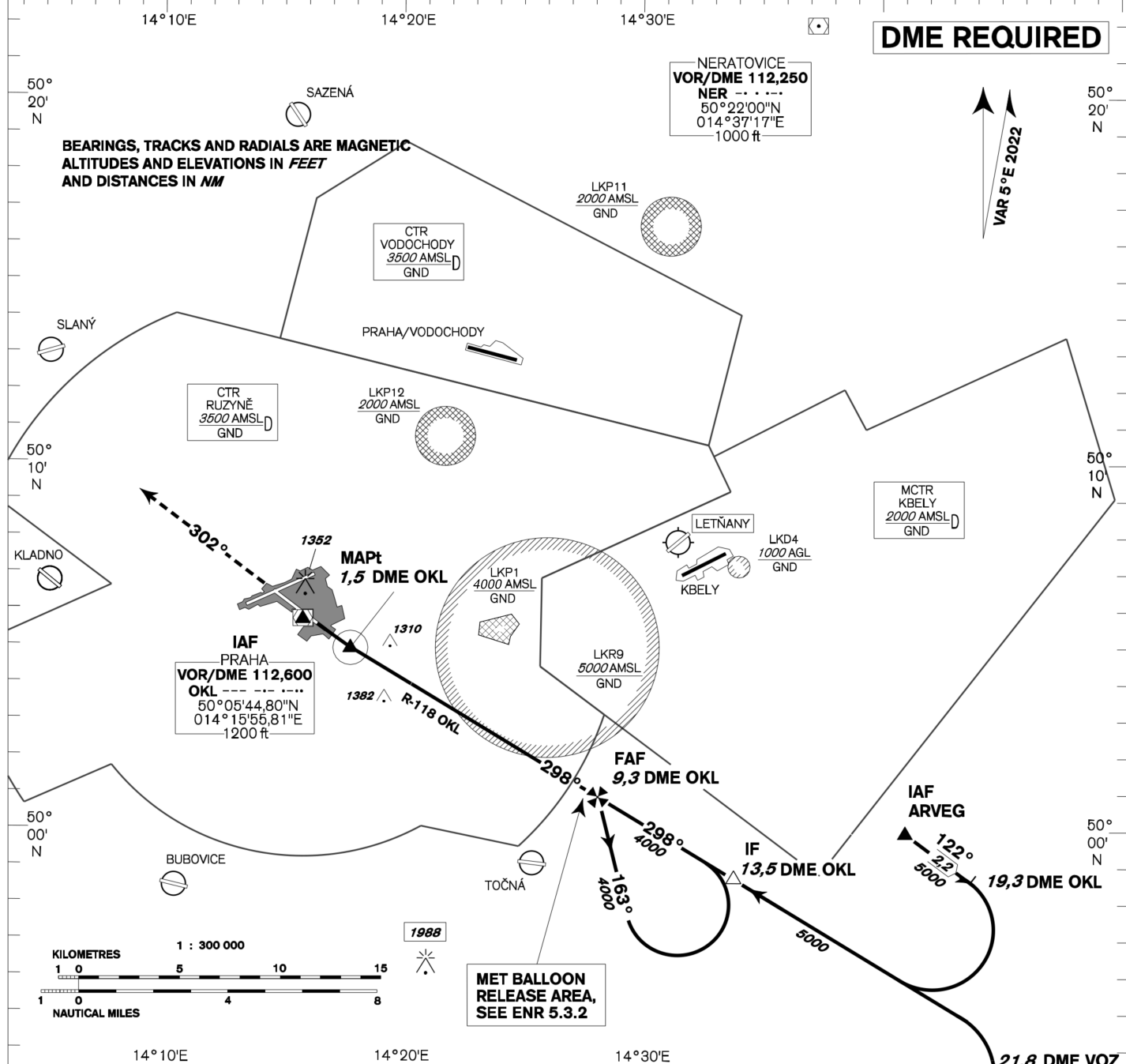
**INSTRUMENT
APPROACH
CHART - ICAO**

AERODROME ELEV **1234**
THR RWY 30 ELEV **1232**
OCH RELATED TO THR RWY 30

PRAHA RADAR 127,580
RUZYŇ RADAR 119,010
SUPPLEMENTARY FREQ 136,080
121,500
RUZYŇ TOWER 134,560
SUPPLEMENTARY FREQ 118,110
121,500



**PRAHA/Ruzyně
VOR
RWY 30**

DME REQUIRED**MISSED APPROACH:**

Climb on track 302° to 4000ft,
radar vectoring will be provided.

In case of RCF climb on track
302° to 4000ft, at 10NM DME OKL
turn right to OKL and climb to 5000ft.

THR 500525.68N, 0141654.02E
ELEV 1232

					NM FM THR															
					6	4	2	0	2	4	6	8	10	12						
OCA/OCH			A	B	C	D														
Straight - in Approach		ft	1620 / 380																	
Circling		see the circling approach chart																		
							DME OKL	NM	10	9	8	7	6	5	4	3	2			
							THR DIST	NM	9,3	8,3	7,3	6,3	5,3	4,3	3,3	2,3	1,3			
							ALTITUDES	ft	4240	3920	3610	3290	2970	2650	2330	2010	1700			
								kt	80		100		120		140		160		180	
							FAF - MAPt 7,8 NM	min:sec	5:50		4:40		3:53		3:20		2:55		2:36	
							Rate of descent	ft/min	420		530		640		740		850		960	

Timing is not authorized for defining the MAPt.

Timing is not authorized for defining the MAPt.

change: horizontal and vertical limits of LKP1